

INDEXED DM/DM  
 FOLLOW UP km  
 PROOFED km  
 SCANNED DM

Instrument #: 2016-1578  
 07/28/2016 11:11:06 AM Total Pages: 1  
 PLC PLAT CORNER CER  
 Recording Fee: \$0.00 Transfer Tax: \$0  
 Denise Meeves, Recorder, Crawford County Iowa



PREPARED BY: PAUL ASSMAN-CRAWFORD COUNTY ENGINEER'S OFFICE-COURTHOUSE-DENISON, IA.-712-263-2449

## UNITED STATES PUBLIC LAND SURVEY CORNER CERTIFICATE OF

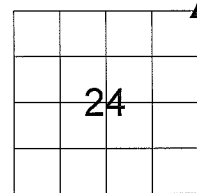
LAND SURVEY MONUMENT SITUATED IN JACKSON TOWNSHIP, THE NORTHEAST CORNER OF SECTION 24, T-85N,  
R-37W OF THE FIFTH P.M. CRAWFORD COUNTY, IOWA.

PREVIOUSLY RECORDED AS NO. 2006-2431

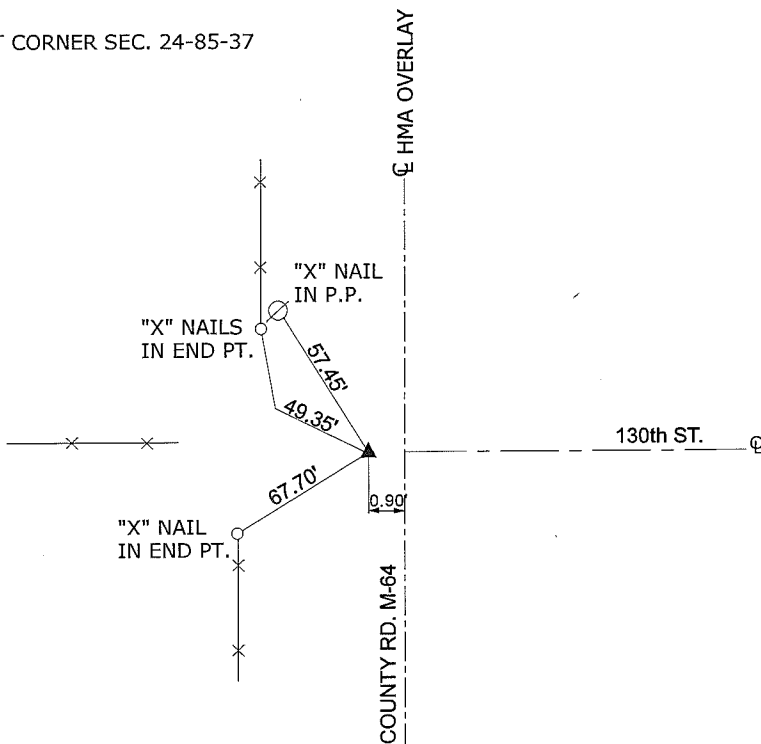
### MONUMENT DESCRIPTION AND REMARKS

NORTHEAST CORNER SEC. 24-85-37

FOUND 1/2" IRON PIN 8.0" DEEP WHICH WAS PREVIOUSLY SET USING CONSTRUCTION TIES FROM CONSTRUCTION PLANS RS-200(13)--61-24. COMPLETED HMA OVERLAY. SET CARRIAGE BOLT 0.05' DEEP AND RETIED CORNER.



NORTHEAST CORNER SEC. 24-85-37



ALL DISTANCES ARE PLUMB CHAINED

**CERTIFICATION:**

I HEREBY CERTIFY THAT THIS LAND SURVEYING DOCUMENT WAS PREPARED AND THE RELATED SURVEY WORK WAS PERFORMED BY ME OR UNDER MY DIRECT PERSONAL SUPERVISION AND THAT I AM A DULY LICENSED LAND SURVEYOR UNDER THE LAWS OF THE STATE OF IOWA.

Paul J. Assman 7/27/16  
 Signature Date of Survey

PAUL J. ASSMAN 11982 12-31-16  
 Typed Name L.S. No. License Renewal Date

Pages covered by this seal 1

