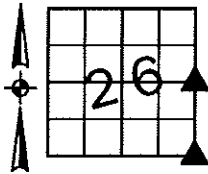


Sara Meseck, RECORDER
 Crawford County, Iowa
 Instr. Number: 2026-0742
 Recorded: 4/15/2026 at 10:59:11.0 AM
 Pages 1
 County Recording Fee: \$7.00
 Iowa E-Filing Fee: \$3.13
 Combined Fee: \$10.13
 Revenue Tax:

PREPARED BY AND RETURN TO: MIKE SCHULTE, SCHULTE SURVEYING, INC., 2003 390TH STREET, WESTSIDE, IA 51467 (712) 790-3489

UNITED STATES PUBLIC LAND SURVEY CORNER CERTIFICATE OF
 LAND SURVEY MONUMENTS SITUATED IN SECTION 26, TOWNSHIP 85 NORTH, RANGE 37 WEST, OF THE FIFTH
 PRINCIPAL MERIDIAN, CRAWFORD COUNTY, IOWA. PREVIOUSLY RECORDED IN SEE BELOW IN COUNTY
(book, page instrument number)
 RECORDER'S OFFICE.

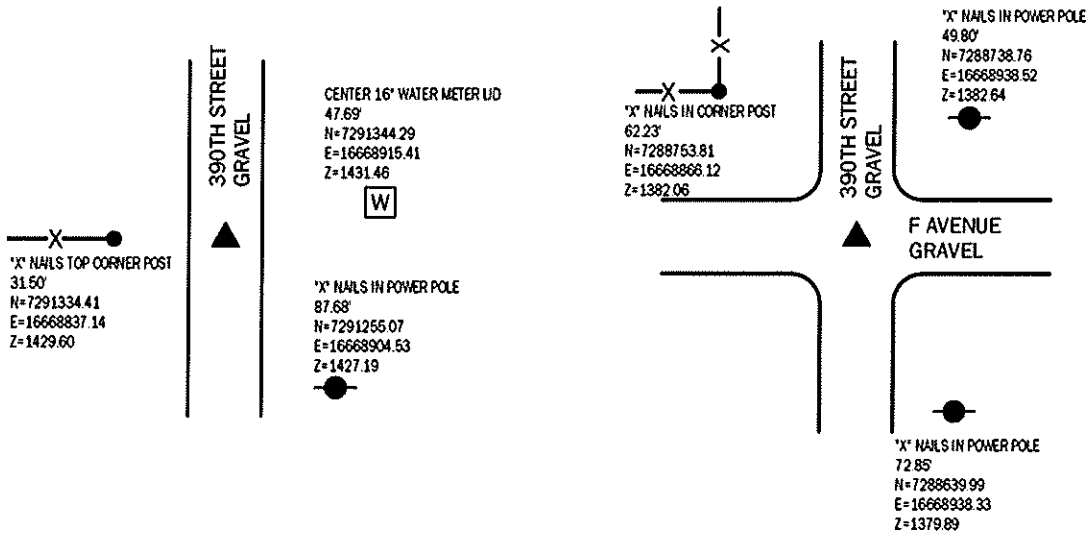


E1/4 CORNER

FND 1/2" REBAR YPC #11804 4" DEEP
 N=7291335.06 E=16668868.63 Z=1430.21
 USED CERTIFICATE RECORDED IN FEE BOOK 2006-2432 AND A
 METAL LOCATOR TO FIND A 1/2" REBAR YPC #11804 4" DEEP.
 VERIFIED WITH 1 REMAINING TIE.
 THIS CERTIFICATE IS BEING FILED TO UPDATE THE REFERENCE TIES.

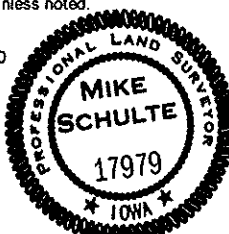
SE CORNER

FND 1 1/4" SQUARE TOP BOLT 4" DEEP
 N=7288703.76 E=16668903.10 Z=1380.79
 USED CERTIFICATE RECORDED IN INSTRUMENT #2015-2089 AND A
 METAL LOCATOR TO FIND A 1 1/4" SQUARE TOP BOLT, 4" DEEP.
 VERIFIED WITH 3 REMAINING TIES.
 THIS CERTIFICATE IS BEING FILED TO UPDATE THE REFERENCE TIES.



*All distances are measured horizontally unless noted.
 I HEREBY CERTIFY THAT THIS LAND SURVEYING DOCUMENT WAS
 PREPARED BY ME OR UNDER MY DIRECT PERSONAL SUPERVISION AND
 THAT I AM A DULY LICENSED PROFESSIONAL LAND SURVEYOR UNDER
 THE LAWS OF THE STATE OF IOWA.

Mike Schulte
 MIKE SCHULTE
 LICENSE NUMBER 17979
 LICENSE RENEWAL DATE IS DECEMBER 31, 2027
 PAGES COVERED BY THIS SEAL: 1 OF 1
 2026/04/02
 DATE



LIST CORNERS TO BE INDEXED

CORNER	SECTION	TWP	RANGE
SE CORNER	26	85	37
NE CORNER	35	85	37
NW CORNER	36	85	37
SW CORNER	25	85	37
E1/4 CORNER	26	85	37
W1/4 CORNER	25	85	37

BASIS OF BEARING
 IARCS ZONE 6 - US SURVEY FEET
 IARFN DERIVED - NAD83(2011)EPOCH 2010.00)