

98 APR 24 PM 12: 27

INST. NO. 98-1326
DENISE MEEVES, RECORDER
Denise Meeves
FEE 3.00

INDEXED
FOLLOW UP
PROCESSED
DM

This document prepared by: Semke & Associates - 712-792-2276
Michael G. Semke, L.S.#10318 - 608 N. Court St., Carroll, Iowa.

UNITED STATES PUBLIC LAND SURVEY CORNER CERTIFICATE
OF

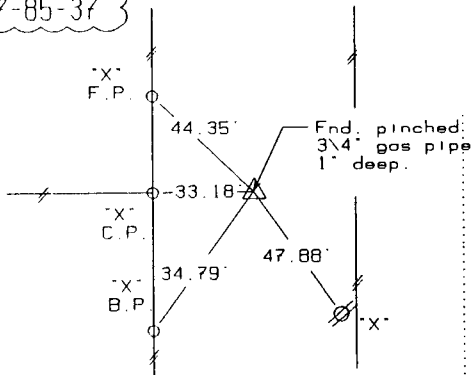
Land Survey Monuments situated in Section 27, Township 85, Range 37, of the Fifth Principal Meridian, Crawford County, Iowa. Previously recorded in _____ in County Recorder's Office.
(book, page, document number, etc.)

(Show reason for preparing this certificate, the evidence and detailed procedures used in establishing the corner positions and monumentation found or placed.)

PLAN - VIEW

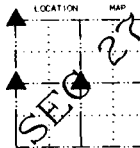
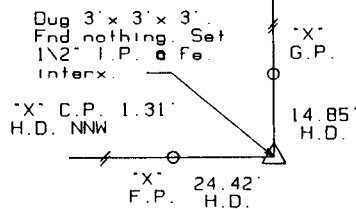
(Show a minimum of three reference ties to durable physical objects, relevant monuments and physical conditions that will enable recovery of the corner.)

NW COR
27-85-37

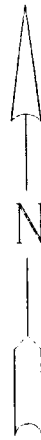
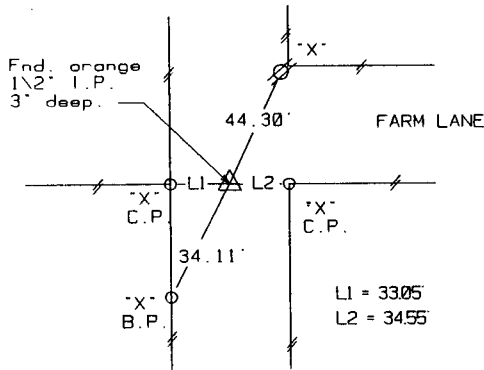


CENTER
27-85-37

NOTE:
H.D. =
HORIZONTAL
DISTANCE



W 1/4 COR
27-85-37



Note: All ties slope chained unless noted.



I HEREBY CERTIFY THAT THIS CORNER CERTIFICATE WAS PREPARED BY ME OR UNDER MY DIRECT PERSONAL SUPERVISION AND THAT I AM A PROFESSIONAL LAND SURVEYOR UNDER THE LAWS OF THE STATE OF IOWA. MY REGISTRATION IS SUBJECT TO RENEWAL 12-31-99.

4/23/98
DATE

Michael G. Semke
MICHAEL G. SEMKE, RLS NO 10318

List Corners to be Indexed

Corners	Section	Twp	Range
W 1/4	27	85	37
E 1/4	28	85	37
NW COR	27	85	37
NE COR	28	85	37
SE COR	21	85	37
SW COR	22	85	37
CENTER	27	85	37