

FILED DENISON, IOWA
CRAWFORD COUNTY

2004 JAN 26 AM 11:49
INST. NO. 2004-0225
DENISE MEEVES, RECORDER
Denise Meeves
FEE 11.00

WARDER C. HILLHOUSE, JR. MHF ENGINEERING P.C. 300 W. MCKINLEY JEFFERSON, IA. (515)386-4101

UNITED STATES PUBLIC LAND SURVEY CORNER CERTIFICATE OF

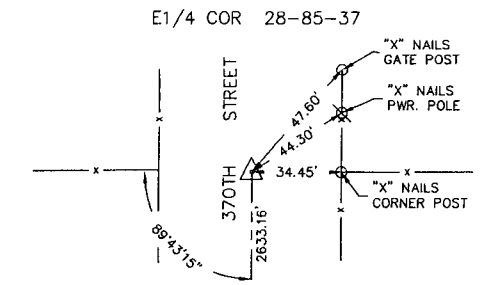
Land Survey Monuments in Section 28, Township 85, Range 37, of the Fifth Principal Meridian, CRAWFORD County, Iowa. Previously recorded in _____ in County Recorder's Office.
(book, page, document number, etc.)

(Show reason for preparing this certificate, the evidence and detailed procedures used in establishing the corner positions and monumentation found or placed.)

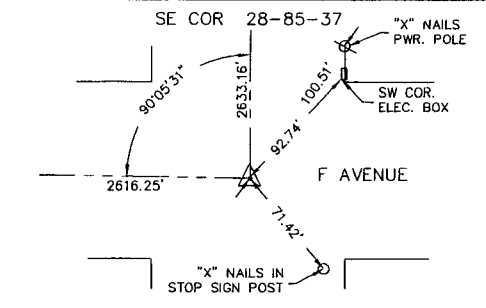
Monument Description and Remarks: CORNERS LOCATED FOR SURVEY WORK IN SECTION.

PLAN - VIEW

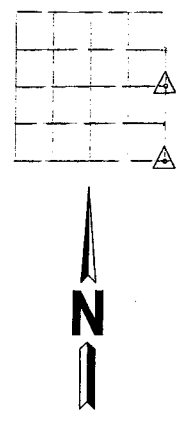
(Show a minimum of three reference ties to durable physical objects, relevant monuments and physical conditions that will enable recovery of the corner.)



FOUND AND ACCEPTED 1/2" REROD 6" DEEP USING TIES FROM ENGINEERS OFFICE WHICH INDICATE CONCRETE MONUMENT.



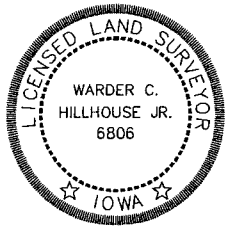
FOUND AND ACCEPTED #5798 CAPPED REROD 1' DEEP AS INDICATED IN THE TIES FROM THE ENGINEERS OFFICE.



I hereby certify that this land surveying document and the related survey work was performed by me or under my direct personal supervision and that I am a duly licensed land surveyor under the laws of the state of Iowa.

Signature: Warder C. Hillhouse Jr.
Warder C. Hillhouse, Jr.
Date: 1/24/04 Lic. No. 6806

License Renewal Dec. 31, 2005
Date Surveyed: 01/08/04



Seal

List Corners to be Indexed

Corners	Section	Twp	Range
E1/4 COR	28	85	37
SE COR	28	85	37

File No. 03206-1

M.H.F. ENGINEERING, P.C.
ENGINEERS - LAND SURVEYORS
Jefferson, Iowa 50129 Ph. (515)386-4101