

INDEXED Daly
 FOLLOW UP DM
 PROOFED DM
 SCANNED cy

REC011666



Crawford County Recorder Denise Meeves
 FEE BOOK 2006-2434 8/18/2006 @ 11:12AM
 FLC PLAT CORNER CERBook: Page: #: 1
 Total Fees: \$7.00

PREPARED BY & RETURN TO MICHAEL G. GEIER, SNYDER & ASSOCIATES, INC. 2727 SW SNYDER ROAD, ANKENY, IOWA 50023 (888) 964-2020

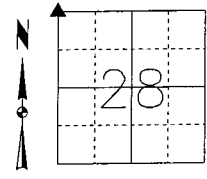
UNITED STATES PUBLIC LAND SURVEY CORNER CERTIFICATE OF

Land Survey Monuments situated in Section 28, Township 85, Range 37, of the Fifth Principal Meridian, CRAWFORD County, Iowa. Previously recorded in N/A in County Recorder's Office. (book, page, document number, ect.)

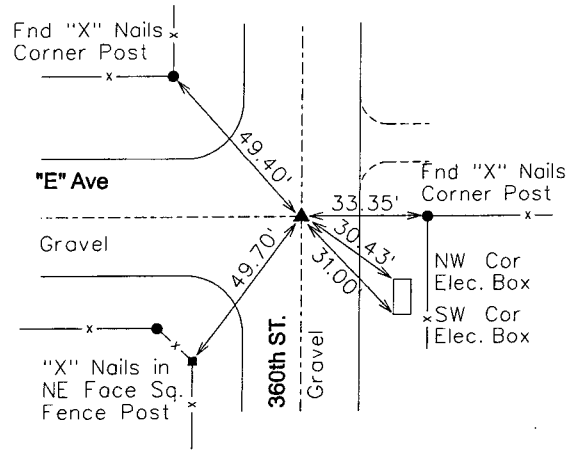
(Show reason for preparing this certificate, the evidence and detailed procedures used in establishing the corner positions and monumentation found or placed.)

Monument Description and Remarks:
NORTHWEST CORNER - FOUND 1" GAS PIPE IN E AVE AND E 360th STREET USING COUNTY ENGINEER SECTION CORNER TIES AND RETIED SECTION CORNER.

Plan-View
 (Show a minimum of three reference ties to durable physical objects, relevant monuments and physical conditions that will enable recovery of the corner.)



NORTHWEST CORNER
 FOUND 1" GAS PIPE



I hereby certify that this land surveying document was prepared and the related surveying work was performed by me or under my direct supervision and that I am a duly licensed Land Surveyor under the laws of the State of Iowa.
Michael G. Geier 8-10-06
 Michael G. Geier, PLS Date
 License Number 11804
 My License Renewal Date is December 31, 2007
 Pages or sheets covered by this seal:
 SHEET 1 OF 1

List Corners to be Indexed

Corners	Section	Twp	Range
NW COR	28	85	37
SW COR	21	85	37
SE COR	20	85	37
NE COR	29	85	37