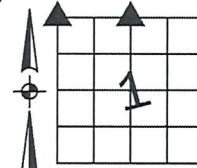


PREPARED BY AND RETURN TO: MIKE SCHULTE, SCHULTE SURVEYING, INC., 2003 390TH STREET, WESTSIDE, IA 51467 (712) 790-3489

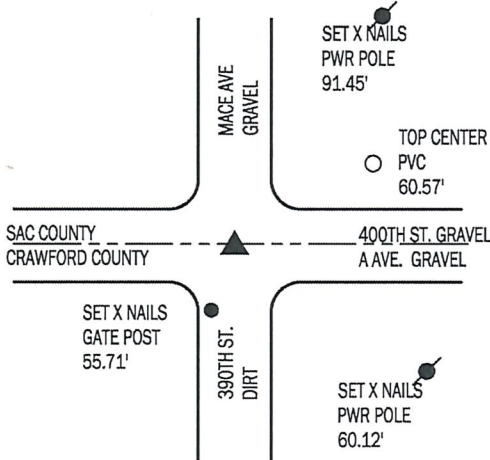
UNITED STATES PUBLIC LAND SURVEY CORNER CERTIFICATE OF

LAND SURVEY MONUMENTS SITUATED IN SECTION 36, TOWNSHIP 85 NORTH, RANGE 37 WEST, OF THE FIFTH PRINCIPAL MERIDIAN, CRAWFORD COUNTY, IOWA. PREVIOUSLY RECORDED IN SEE BELOW IN IN COUNTY RECORDER'S OFFICE.
(book, page instrument number)



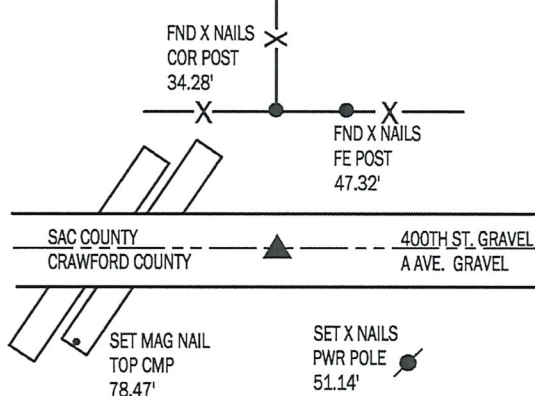
NW CORNER

FND CONC. MONUMENT 28" DEEP
 SET 5/8"X12" REBAR YPC 17979
 NORTHING 7315012.54 EASTING 16668797.19



N1/4 CORNER

FND 1/2" REBAR YPC 10318 4" DEEP
 NORTHING 7314999.26 EASTING 16671429.67



USED TIES RECORDED IN SAC COUNTY 080165 TO FIND 1/2" REBAR WITH YPC 10318 4" DEEP. RETIED CORNER SINCE A FEW TIES HAVE NOW CHANGED.

CRAWFORD COUNTY ENGINEER'S TIES INDICATE A CONCRETE MONUMENT. PREVIOUS TIES ALL MISSING. CRANKED UP METAL LOCATER AND FOUND CONCRETE MONUMENT 28" DEEP. FILLED HOLE AND SET 5/8"X12" REBAR WITH YPC 17979 4" DEEP OVER C.M.

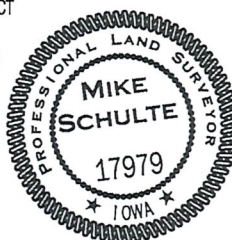
*All distances are measured horizontally unless noted.

LIST CORNERS TO BE INDEXED

CORNER	SECTION	TWP	RANGE
N1/4 CORNER	1	85	37
NW CORNER	1	85	37
NE CORNER	2	85	37

I HEREBY CERTIFY THAT THIS LAND SURVEYING DOCUMENT WAS PREPARED BY ME OR UNDER MY DIRECT PERSONAL SUPERVISION AND THAT I AM A DULY LICENSED PROFESSIONAL LAND SURVEYOR UNDER THE LAWS OF THE STATE OF IOWA.

Mike Schulte
 MIKE SCHULTE 2019/03/25
 LICENSE NUMBER: 17979 DATE
 LICENSE RENEWAL DATE IS DECEMBER 31, 2019
 PAGES COVERED BY THIS SEAL: 1 OF 1



BASIS OF BEARING

laRCS ZONE 7 - US SURVEY FEET
 laRTN DERIVED - NAD83(2011)(EPOCH 2010.00)