

FILED DENISON, IOWA  
 CRAWFORD COUNTY

2004 JAN 26 AM 11:48

INST. NO. 2004-0224  
 DENISE MEEVES, RECORDER  
*Denise Meeves*  
 FEB 11 2004

WARDER C. HILLHOUSE, JR. MHF ENGINEERING P.C. 300 W. MCKINLEY JEFFERSON, IA. (515)386-4101

**UNITED STATES PUBLIC LAND SURVEY CORNER CERTIFICATE OF**

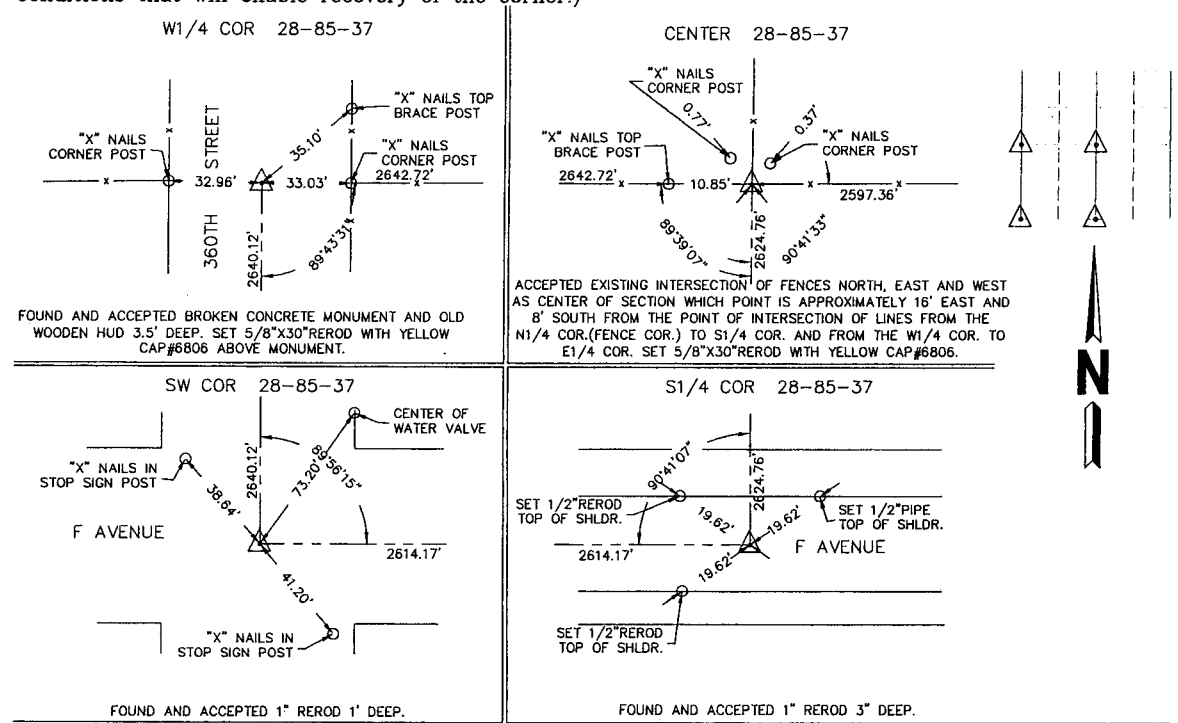
Land Survey Monuments in Section 28, Township 85, Range 37, of the Fifth Principal Meridian, CRAWFORD County, Iowa. Previously recorded in \_\_\_\_\_ in County Recorder's Office.

(Show reason for preparing this certificate, the evidence and detailed procedures used in establishing the corner positions and monumentation found or placed.)

Monument Description and Remarks: CORNERS LOCATED FOR SURVEY WORK IN SECTION.

**PLAN - VIEW**

(Show a minimum of three reference ties to durable physical objects, relevant monuments and physical conditions that will enable recovery of the corner.)



I hereby certify that this land surveying document and the related survey work was performed by me or under my direct personal supervision and that I am a duly licensed land surveyor under the laws of the state of Iowa.  
 Signature: Warder C. Hillhouse, Jr.  
 Warder C. Hillhouse, Jr.  
 Date: 1/22/04 Lic. No. 6806  
 License Renewal Dec. 31, 2005  
 Date Surveyed: 01/08/04

Seal

List Corners to be Indexed

Corners	Section	Twp	Range
W1/4 COR	28	85	37
SW COR	28	85	37
S1/4 COR	28	85	37
CENTER	28	85	37

File No. 03206-1

M.H.F. ENGINEERING, P.C.  
 ENGINEERS - LAND SURVEYORS  
 Jefferson, Iowa 50129 Ph. (515)386-4101