

INDEXED DM/DM
 FOLLOW UP KM
 PROOFED SM
 SCANNED DM

Instrument #: 2016-1574
 07/28/2016 11:11:06 AM Total Pages: 1
 PLC PLAT CORNER CER
 Recording Fee: \$0.00 Transfer Tax: \$0
 Denise Meeves, Recorder, Crawford County Iowa



PREPARED BY: PAUL ASSMAN-CRAWFORD COUNTY ENGINEER'S OFFICE-COURTHOUSE-DENISON, IA.-712-263-2449

UNITED STATES PUBLIC LAND SURVEY CORNER CERTIFICATE OF

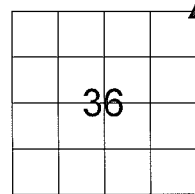
LAND SURVEY MONUMENT SITUATED IN JACKSON TOWNSHIP, THE NORTHEAST CORNER OF SECTION 36, T-85N,
R-37W OF THE FIFTH P.M. CRAWFORD COUNTY, IOWA.

PREVIOUSLY RECORDED AS NO. 99-3357

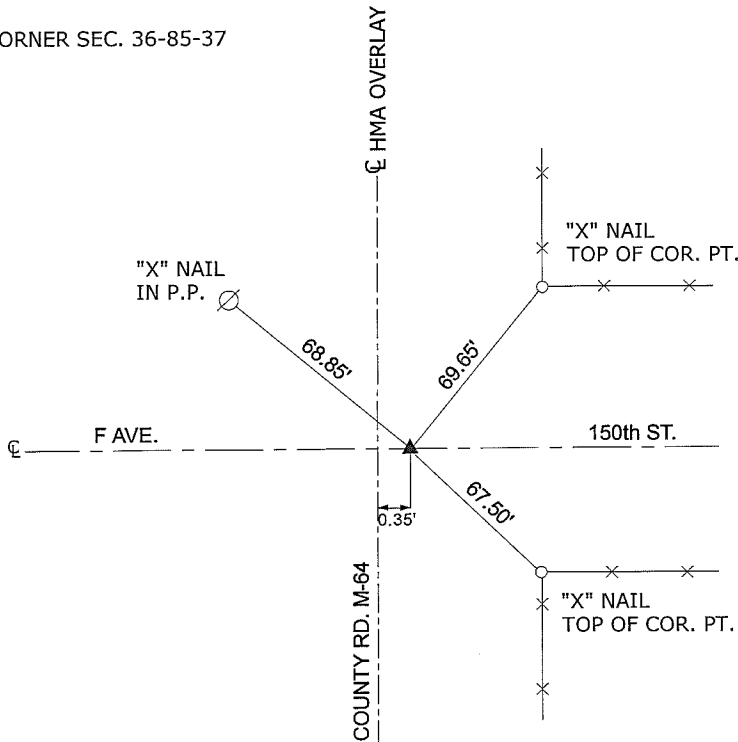
MONUMENT DESCRIPTION AND REMARKS

NORTHEAST CORNER SEC. 36-85-37

FOUND BOLT FLUSH WITH SURFACE WHICH WAS PREVIOUSLY SET USING CONSTRUCTION TIES FROM CONSTRUCTION PLAN RS-200(13)--61-24. COMPLETED HMA OVERLAY. SET CARRIAGE BOLT 0.05' DEEP OVER BOLT AND RETIED CORNER.



NORTHEAST CORNER SEC. 36-85-37

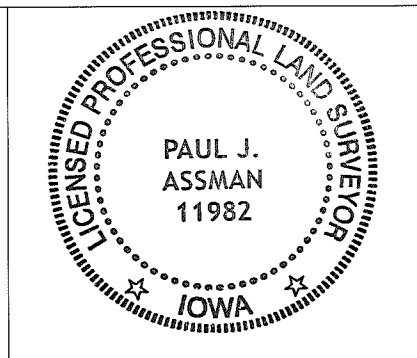


ALL DISTANCES ARE PLUMB CHAINED

CERTIFICATION:

I HEREBY CERTIFY THAT THIS LAND SURVEYING DOCUMENT WAS PREPARED AND THE RELATED SURVEY WORK WAS PERFORMED BY ME OR UNDER MY DIRECT PERSONAL SUPERVISION AND THAT I AM A DULY LICENSED LAND SURVEYOR UNDER THE LAWS OF THE STATE OF IOWA.

	7/27/16	
Signature	Date of Survey	
PAUL J. ASSMAN	11982	12-31-16
Typed Name	L.S. No.	License Renewal Date



Pages covered by this seal 1