

E Oct 3

3 Found 1 rock 10" x 12" x 18" at a depth of 20' lowered and set C.M.

Ties from "X" nails

41.35 S.W. from Gate Post

34.20 N.W. from Gate Post

32.00 E. from Cor. Post

33.00 W. from 5/8" iron bar w/ survey cap #7718

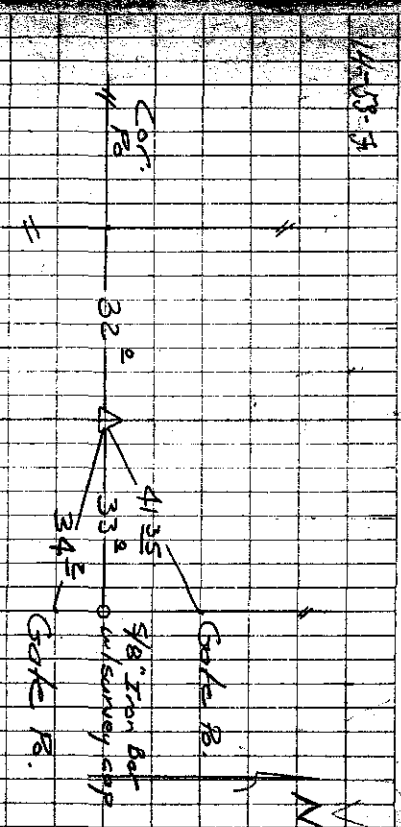
Map 3

34

Dug 1 1/2' x 5' x 22' hole in L1214 04

fences from N.W.S. No find

FOUND 10-3-39



1023187 Found 3/8" iron bar 10" deep. Rehid by Bud Wade

K.L.S. & 7718 Sac City Surveying

S Mapping

Dug 10.3.39

EM