

INDEXED *WV*  
 FOLLOW UP *WV*  
 PROOFED *WV*  
 SCANNED *WV*

PREPARED BY AND RETURN TO: JEFFREY M. KRUEGER P.L.S., KUEHL AND PAYER LTD., 2002 WEST MAIN ST., SAC CITY, IA 50583 PH. (712)662-7859

**UNITED STATES PUBLIC LAND SURVEY CORNER CERTIFICATE**  
**OF**

LAND SURVEY MONUMENTS SITUATED IN SECTION 4 TOWNSHIP 85 NORTH,  
 RANGE 37 WEST, OF THE 5TH PRINCIPAL MERIDIAN, CRAWFORD COUNTY, IOWA.

PREVIOUSLY RECORDED IN BOOK \_\_\_\_\_ PAGE \_\_\_\_\_

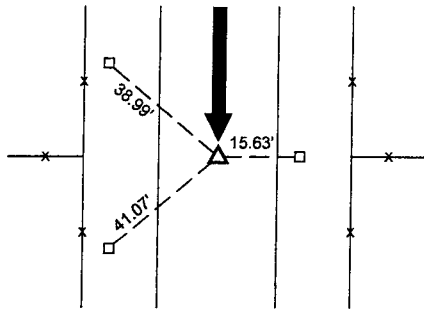
MONUMENT DESCRIPTION AND REMARKS:

- 1.) W 1/4 CORNER 4-85-37: FOUND CONCRETE MONUMENT 30" DEEP; RAISED WITH 1/2" REBAR 6" DEEP
- 2.) CENTER OF SECTION 4-85-37: NO RECORD OF CORNER; SEARCHED & FD. NOTHING; SET 5/8" REBAR WITH ORANGE PLASTIC CAP STAMPED "J KRUEGER 16749" AT INTERSECTION OF FENCES
- 3.) NE CORNER SE 1/4 SW 1/4 4-85-37: SET 5/8" REBAR WITH ORANGE PLASTIC CAP STAMPED "J KRUEGER 16749" EQUIDISTANT AND ON LINE BETWEEN THE CENTER OF SECTION AND S 1/4 CORNER

**1.) W 1/4 CORNER**

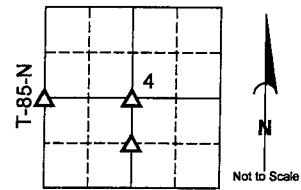
**4-85-37**

**FD. CONCRETE MONUMENT 30" DEEP;  
 RAISED WITH 1/2" REBAR 6" DEEP**



ALL TIES ARE TO 5/8" REBARS WITH PINK PLASTIC CAPS STAMPED "SECTION CORNER REFERENCE POINT"

**PLAN - VIEW**



R-37-W  
 CRAWFORD COUNTY

CENTER OF SECTION  
 4-85-37

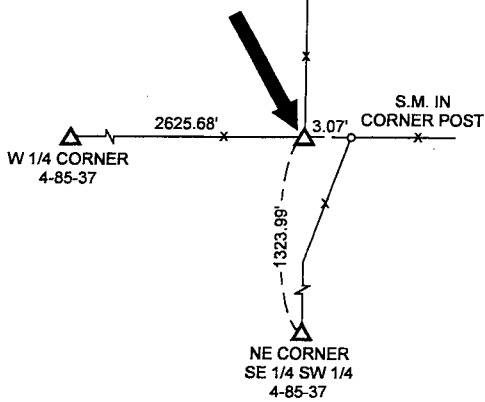
5/8" REBAR WITH ORG. PLASTIC CAP STAMPED "J KRUEGER 16749"

**3.) NE CORNER  
 SE 1/4 SW 1/4  
 4-85-37  
 SET 5/8" REBAR WITH  
 ORANGE PLASTIC CAP  
 STAMPED "J KRUEGER 16749"**

**2.) CENTER OF SECTION**

**4-85-37**

**SET 5/8" REBAR WITH  
 ORANGE PLASTIC CAP  
 STAMPED "J KRUEGER 16749"**



S.M. = SURVEY MARKER  
 PLASTIC REFERENCE DISK  
 AS SHOWN BELOW



I hereby certify that this land surveying document was prepared and the related survey work was performed by me or under my direct personal supervision and that I am a duly licensed Land Surveyor under the laws of the State of Iowa.

*Jeffrey M. Krueger*  
 Jeffrey M. Krueger  
 License Number: 16749  
 My license renewal date is December 31, 2008  
 Pages covered by this seal: 1  
 Date: 7-30-2007

**List Corners to be Indexed**

Corners	Section	Township	Range
1) W 1/4	4	85	37
2) CENTER	4	85	37
3) NE SE 1/4 SW 1/4	4	85	37

PN: 070575  
 DRAWN: JMK