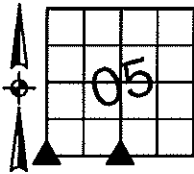


Sara Meseck, RECORDER  
 Crawford County, Iowa  
 Instr. Number: 2025-1366  
 Recorded: 7/14/2025 at 3:51:37.0 PM  
 Pages 1  
 County Recording Fee: \$7.00  
 Iowa E-Filing Fee: \$3.13  
 Combined Fee: \$10.13  
 Revenue Tax:

PREPARED BY AND RETURN TO: MIKE SCHULTE, SCHULTE SURVEYING, INC., 2003 390TH STREET, WESTSIDE, IA 51467 (712) 790-3489

**UNITED STATES PUBLIC LAND SURVEY CORNER CERTIFICATE OF**  
 LAND SURVEY MONUMENTS SITUATED IN SECTION 05, TOWNSHIP 85 NORTH, RANGE 37 WEST, OF THE FIFTH  
 PRINCIPAL MERIDIAN, CRAWFORD COUNTY, IOWA. PREVIOUSLY RECORDED IN SEE BELOW IN COUNTY  
(book, page instrument number)  
 RECORDER'S OFFICE.

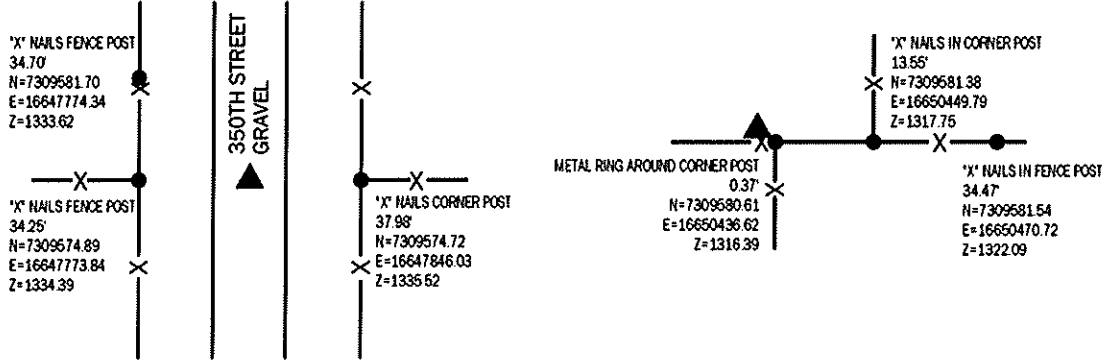


**SW CORNER**

FND CONCRETE MONUMENT, BROKEN TOP  
 N=7309573.54 E=16647808.07 Z=1328.17  
 USED CERTIFICATE RECORDED IN FEE BOOK 2010-2535 AND A  
 METAL LOCATOR TO FIND A CONCRETE MONUMENT WITH A BROKEN  
 TOP 4" DEEP. VERIFIED WITH 1 REMAINING TIE.  
 THIS CERTIFICATE IS BEING FILED TO UPDATE THE REFERENCE TIES.

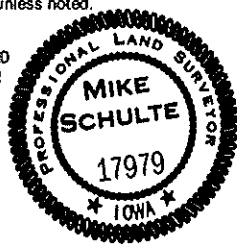
**S1/4 CORNER**

SET 5/8" REBAR YPC #17979  
 N=7309580.67 E=16650436.26 Z=1316.12  
 OLD COUNTY TIES INDICATE A LARGE SEARCH/DIG AREA BUT  
 NOTHING WAS FOUND OR SET. THIS LOCATION HAS A VERY LARGE  
 BENT IN THE SECTION LINE, OLD AERIALS WERE REVIEWED AND  
 THE ORIGINAL GLO PLATS AS WELL. THE GLO PLATS SHOW A  
 NOTICEABLE DIFFERENCE IN THE CLOSING DISTANCE ON THE  
 NORTH END OF THE TOWNSHIP. THIS DIFFERENCE MAKES ME  
 BELIEVE THE PROBLEM OF THE LARGE BENT OCCURRED AT THE  
 TIME OF THE ORIGINAL SURVEY. SET 5/8" REBAR YPC #17979 BY  
 LOCAL EVIDENCE/FENCE LINES N-S AND E-W.  
 THIS CERTIFICATE IS BEING FILED DUE TO NONE OF RECORD.



\*All distances are measured horizontally unless noted.  
 I HEREBY CERTIFY THAT THIS LAND SURVEYING DOCUMENT WAS  
 PREPARED BY ME OR UNDER MY DIRECT PERSONAL SUPERVISION AND  
 THAT I AM A DULY LICENSED PROFESSIONAL LAND SURVEYOR UNDER  
 THE LAWS OF THE STATE OF IOWA.

*Mike Schulte*  
 MIKE SCHULTE  
 LICENSE NUMBER 17979  
 LICENSE RENEWAL DATE IS DECEMBER 31, 2025  
 PAGES COVERED BY THIS SEAL 1 OF 1  
 2025/07/14  
 DATE



**LIST CORNERS TO BE INDEXED**

CORNER	SECTION	TWP	RANGE
S1/4 CORNER	5	85	37
N1/4 CORNER	8	85	37
SW CORNER	5	85	37
NW CORNER	8	85	37
NE CORNER	7	85	37
SE CORNER	6	85	37

**BASIS OF BEARING**

IA RCS ZONE 4 - US SURVEY FEET  
 IA RTN DERIVED - NAD83(2011) EPOCH 2010.00

**SCHULTE SURVEYING, INC.**

DRAWN BY: SLG  
 PROJ NUMBER: 25-055