

9.10.

E Cor 9

Dug 2 $\frac{1}{2}$ ' x 3' x 18' hole - Found rotted oak
 No Find stake 5" long at a depth
 of 1.0. Dug 1' x 12' x 12' hole to find this
 Lowered and set C.M.

Ties: - from x-spks

35.6 ENE from cor post to W.

169.8 NNE " " R.E.A. pole

20.8 NNW from cor post fence east

cor is 4.0 N. of range of fence W.

36.8 ENE from R.R. Tie cor post

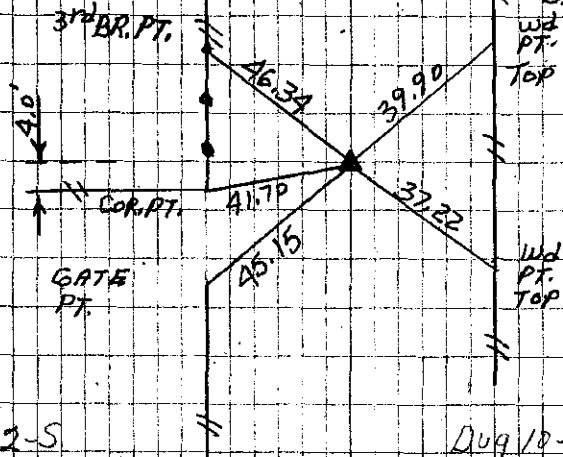
4

N Cor 9

Dug 16" x 4' x 21' hole in line of fence
 from N. No Find. Dug 2 $\frac{1}{2}$ ' x 10' x 20'
 hole. No find.

5-20-S

at June 30 1948
 C.M. 20' deep
 14th hole to surface



15-2-S

Dug 6-7-39

9-12-91 Found

4-15-03

FOUND C.M. 5' DEEP
 SET 2' x 1" IRON
 PIN OVER IT 3"
 DEEP

BERNDT

Dug 10-3-39

9-12-91

19