



REC015484  
 Crawford County Recorder  
 Denise Meeves  
**Fee Book 2007-2190**

08/13/2007 @10:08AM  
 PLC PLAT CORNER CER  
 Book: Page: # Pages: 1  
 Total Fees: \$7.00

INDEXED *JMK*  
 FOLLOW UP *JMK*  
 PROOFED *JMK*  
 SCANNED *JMK*

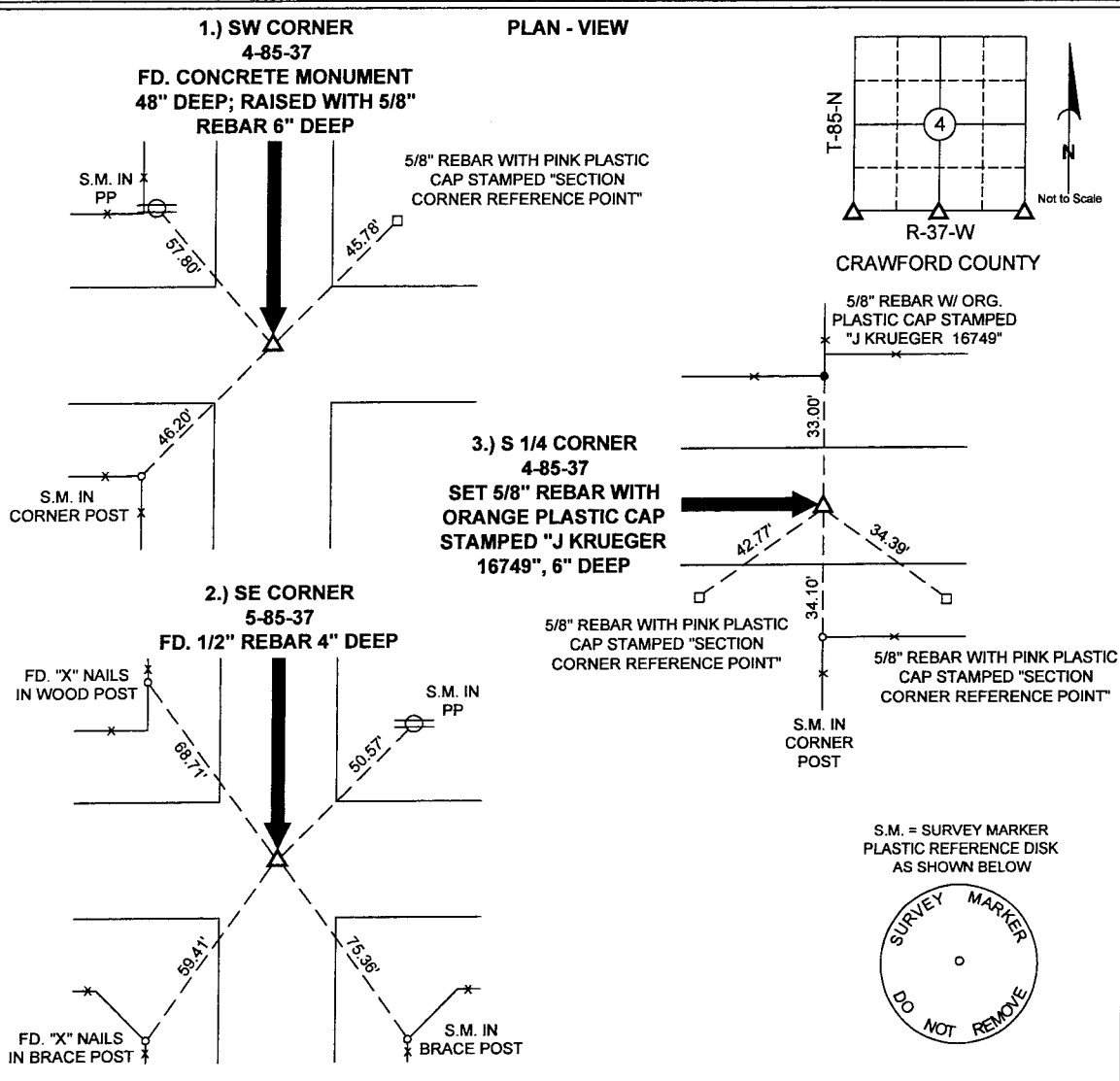
PREPARED BY AND RETURN TO: JEFFREY M. KRUEGER P.L.S., KUEHL AND PAYER LTD., 2002 WEST MAIN ST., SAC CITY, IA 50583 PH. (712)662-7859

**UNITED STATES PUBLIC LAND SURVEY CORNER CERTIFICATE**  
 OF

LAND SURVEY MONUMENTS SITUATED IN SECTION 4 TOWNSHIP 85 NORTH,  
 RANGE 37 WEST, OF THE 5TH PRINCIPAL MERIDIAN, CRAWFORD COUNTY, IOWA.  
 PREVIOUSLY RECORDED IN BOOK \_\_\_\_\_ PAGE \_\_\_\_\_

**MONUMENT DESCRIPTION AND REMARKS:**

- 1.) SW CORNER 4-85-37: FOUND CONCRETE MONUMENT 48" DEEP; RAISED WITH 5/8" REBAR 6" DEEP
- 2.) SE CORNER 4-85-37: FOUND 1/2" REBAR 4" DEEP
- 3.) S 1/4 CORNER 4-85-37: RECORDS FROM CO. ENGINEER'S OFFICE INDICATE HOLES WERE DUG IN 1939 & 1941 AND NO MONUMENT WAS FOUND; SEARCHED & FD. NOTHING; SET 5/8" REBAR WITH ORANGE PLASTIC CAP STAMPED "J KRUEGER 16749", 6" DEEP, ON LINE BETWEEN THE SW CORNER & SE CORNER AND IN LINE WITH FENCES TO THE NORTH AND SOUTH



I hereby certify that this land surveying document was prepared and the related survey work was performed by me or under my direct personal supervision and that I am a duly licensed Land Surveyor under the laws of the State of Iowa.

*Jeffrey M. Krueger* Date: 7-30-2007  
 Jeffrey M. Krueger License Number: 16749  
 My license renewal date is December 31, 2008  
 Pages covered by this seal 1

**List Corners to be Indexed**

Corners	Section	Township	Range
1) SW	4	85	37
2) SE	4	85	37
3) S 1/4	4	85	37

PN: 070575  
 DRAWN: JMK