

98 DEC 30 PM 3 29

INST. NO. 98-3787  
DENISE MEEVES, RECORDER  
*Denise Meeves*  
FEE \$ 6.00

INDEXED  
FOLLOW UP  
PROCESSED

PREPARED BY - TERENCE E. CRAWFORD - SUNDUQUIST ENGINEERING - 120 S. MAIN DENISON, IOWA 51442 - PHONE (712)263-8118

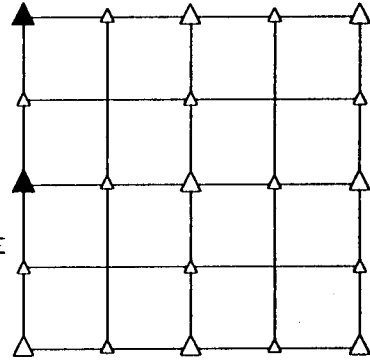
### UNITED STATES PUBLIC LAND SURVEY CORNER CERTIFICATE OF

LAND SURVEY MONUMENT SITUATED IN SECTION 11, T 84 N, R 38 W OF  
THE 5TH P.M., CRAWFORD COUNTY, IOWA.  
PREVIOUSLY RECORDED IN BOOK \_\_\_\_\_, PAGE \_\_\_\_\_, OTHER \_\_\_\_\_

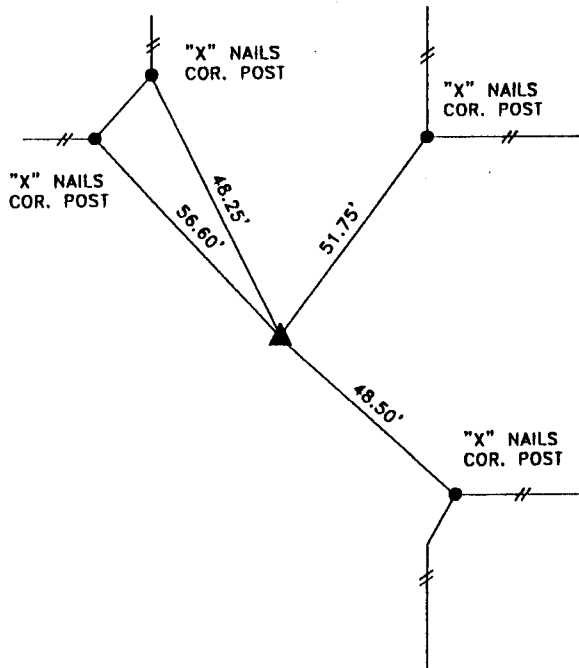
#### MONUMENT DESCRIPTION AND REMARKS

NW CORNER - FOUND BOLT 2' DEEP OVER CM 4' DEEP, RESET BOLT  
& SET 5/8" IRON PIN W/CAP #8893 OVER BOLT

W1/4 CORNER - USING OLD TIES, EXCAVATED 8' X 3' X 3' DEEP  
HOLE, PROBED ADDITIONAL 1'; NO FIND;  
SET 5/8" IRON PIN W/CAP #8893, 0.5 DEEP, SET  
ON SPLIT OF R.O.W. FENCES & IN LINE WITH FENCE  
LINE WEST

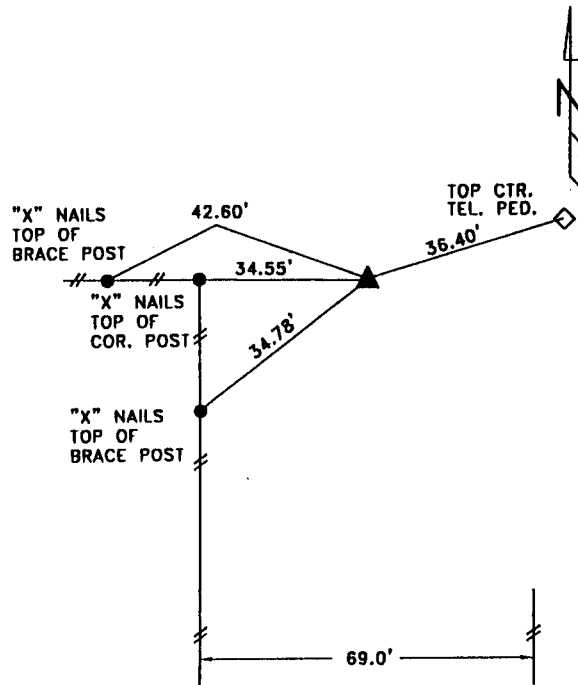


#### PLAN VIEW SHOWING RELATIVE LOCATION OF MONUMENT AND REFERENCE POINTS.



DISTANCES SLOPE CHAINED

NW CORNER SECTION 11-84-38



DISTANCES SLOPE CHAINED

W1/4 CORNER SECTION 11-84-38

I HEREBY CERTIFY THAT THE SURVEY WORK WAS COMPLETED AND  
THIS LAND SURVEYING DOCUMENT WAS PREPARED BY ME OR UNDER  
MY DIRECT SUPERVISION AND THAT I AM A DULY LICENSED LAND  
SURVEYOR UNDER THE LAWS OF THE STATE OF IOWA.

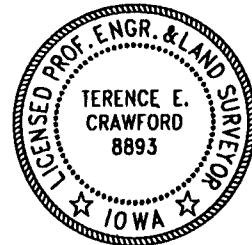
*Terence E. Crawford*  
TERENCE E. CRAWFORD

IA LICENSE NO. 8893

DEC 15 1998

DATE

EXP. DATE DECEMBER 31, 1999



SE PROJECT NO. 2518