

Denise Meeves RECORDER
 Crawford County, Iowa
 Instr. Number: 2021-0063
 Recorded: 1/11/2021 at 8:39:49.0 AM
 Pages 1
 County Recording Fee: \$7.00
 Iowa E-Filing Fee: \$3.13
 Combined Fee: \$10.13
 Revenue Tax:

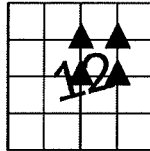
PREPARED BY AND RETURN TO: MIKE SCHULTE, SCHULTE SURVEYING, INC., 2003 390TH STREET, WESTSIDE, IA 51467 (712) 790-3489

UNITED STATES PUBLIC LAND SURVEY CORNER CERTIFICATE OF
 LAND SURVEY MONUMENTS SITUATED IN SECTION 12, TOWNSHIP 84 NORTH, RANGE 38 WEST, OF THE FIFTH
 PRINCIPAL MERIDIAN, CRAWFORD COUNTY, IOWA. PREVIOUSLY RECORDED IN SEE BELOW IN COUNTY
(book, page instrument number)
 RECORDER'S OFFICE.

NW CORNER SW1/4 NE1/4

SET 5/8" REBAR YPC #17979
 N=7276310.54 E=16640087.34

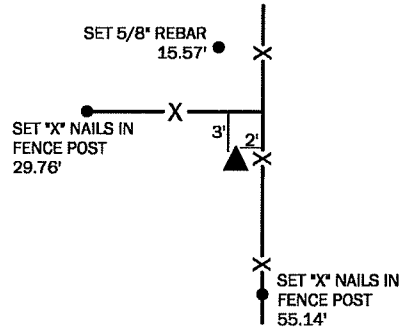
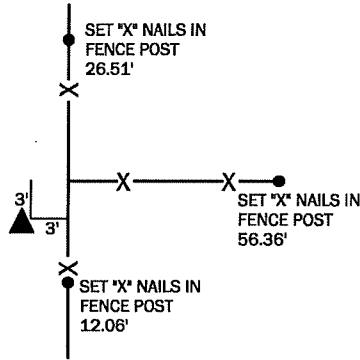
NO RECORD OF CORNER. SET 5/8" REBAR WITH YPC #17979 BY
 SINGLE PROPORTION.
 THIS CORNER CERTIFICATE IS BEING FILED BECAUSE THERE IS
 NO CERTIFICATE ON FILE.



NE CORNER SW1/4 NE1/4

SET 5/8" REBAR YPC #17979
 N=7276322.42 E=16641401.40

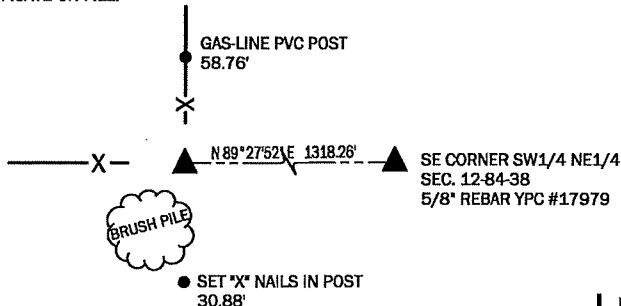
NO RECORD OF CORNER. SET 5/8" REBAR WITH YPC
 #17979 BY INTERSECTION.
 THIS CORNER CERTIFICATE IS BEING FILED BECAUSE THERE
 IS NO CERTIFICATE ON FILE.



CENTER

SET 5/8" REBAR YPC #17979
 N=7274997.83 E=16640087.90

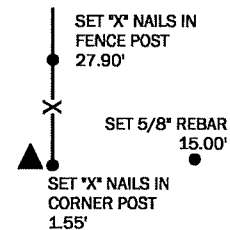
NO TIES OF RECORD. DUG 2'X2'X1' HOLE AT INTERSECTION AND
 PROBED, FOUND NOTHING. SET 5/8" REBAR WITH YPC #17979 AT
 INTERSECTION.
 THIS CORNER CERTIFICATE IS BEING FILED BECAUSE THERE IS NO
 CERTIFICATE ON FILE.



SE CORNER SW1/4 NE1/4

SET 5/8" REBAR YPC #17979
 N=7275010.15 E=16641406.11

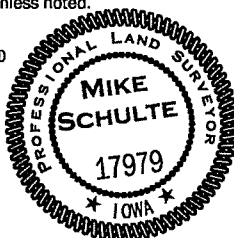
NO RECORD OF CORNER. SET 5/8" REBAR WITH YPC
 #17979 ON-LINE AT FENCE LOCATION.
 THIS CORNER CERTIFICATE IS BEING FILED BECAUSE THERE
 IS NO CERTIFICATE ON FILE.



*All distances are measured horizontally unless noted.

I HEREBY CERTIFY THAT THIS LAND SURVEYING DOCUMENT WAS
 PREPARED BY ME OR UNDER MY DIRECT PERSONAL SUPERVISION AND
 THAT I AM A DULY LICENSED PROFESSIONAL LAND SURVEYOR UNDER
 THE LAWS OF THE STATE OF IOWA.

Mike Schulte
 MIKE SCHULTE
 LICENSE NUMBER: 17979
 LICENSE RENEWAL DATE IS DECEMBER 31, 2021
 PAGES COVERED BY THIS SEAL: 1 OF 1
 DATE: 2021/01/11



LIST CORNERS TO BE INDEXED

CORNER	SECTION	TWP	RANGE
CENTER	12	84	38
SE COR SW1/4 NE1/4	12	84	38
NE COR SW1/4 NE1/4	12	84	38
NW COR SW1/4 NE1/4	12	84	38

BASIS OF BEARING

IaRCS ZONE 6 - US SURVEY FEET
 IaRTN DERIVED - NAD83(2011)(EPOCH 2010.00)