

Instrument #: 2014-2452
 12/04/2014 11:37:43 AM Total Pages: 1
 PLC PLAT CORNER CER
 Recording Fee: \$7.00 Transfer Tax: \$0
 Denise Meeves, Recorder, Crawford County Iowa



WILKE LAND SURVEYING INC. 401 1800th Street Panama, Iowa 51562 (712)489-2898

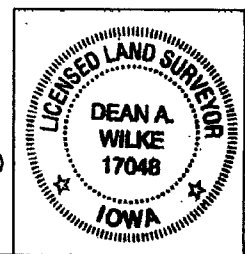
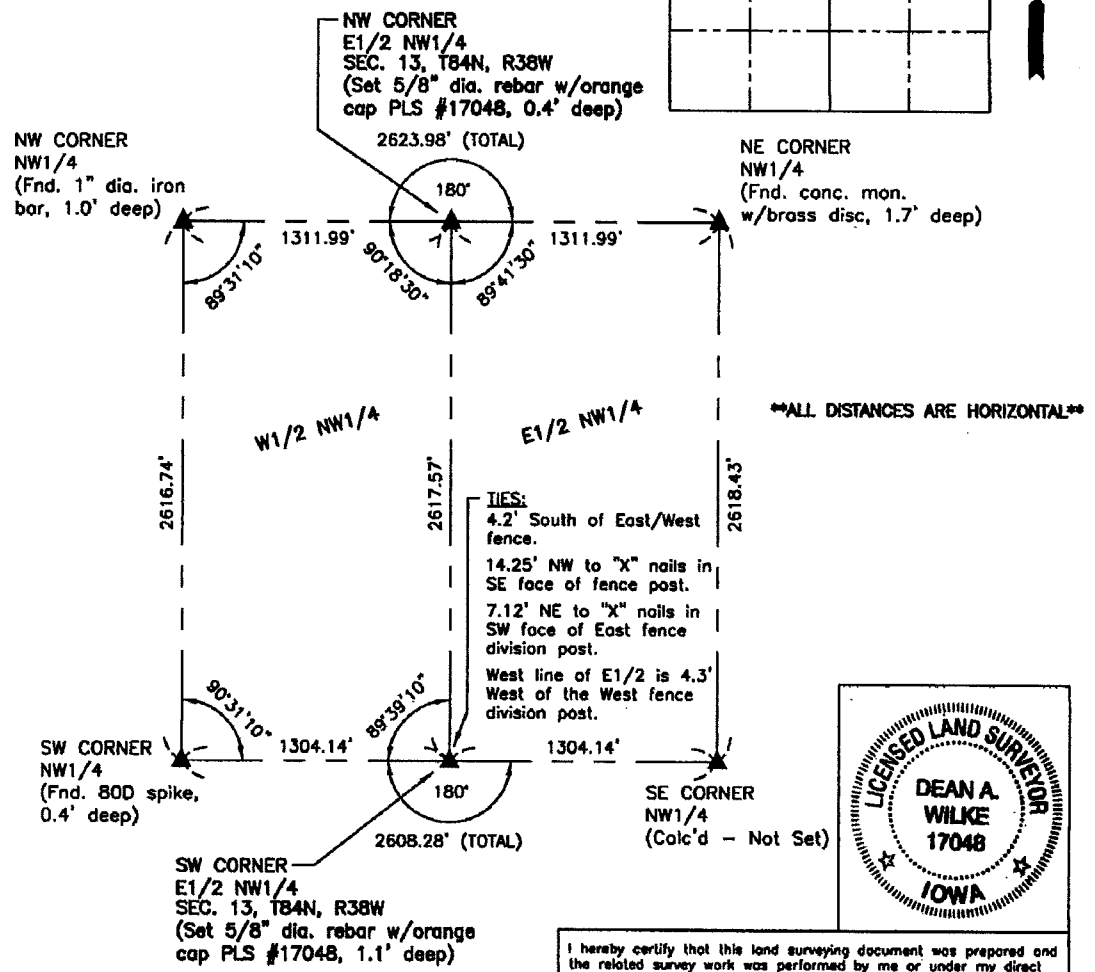
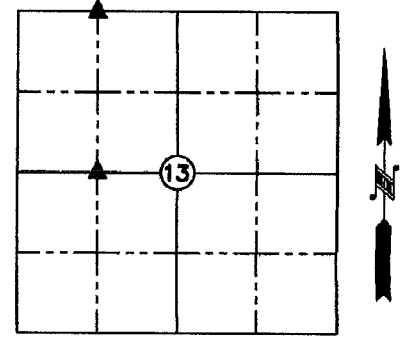
UNITED STATES PUBLIC LAND SURVEY CORNER CERTIFICATE

SECTION 13 TOWNSHIP 84N RANGE 38W COUNTY CRAWFORD
 Reason for Certificate: Survey in NW1/4

Monument Description and Remarks:

NW CORNER E1/2 NW1/4 - Set 5/8" diameter by 24" long rebar with orange cap PLS #17048 (0.4' deep) at the midpoint of the North line of the Northwest Quarter.

SW CORNER E1/2 NW1/4 - Set 5/8" diameter by 24" long rebar with orange cap PLS #17048 (1.1' deep) at the midpoint of the South line of the Northwest Quarter. Monument is 4.2' South of the existing East/West fence. The fence is very crooked East and West of this location.



I hereby certify that this land surveying document was prepared and the related survey work was performed by me or under my direct personal supervision and that I am a duly licensed Land Surveyor under the laws of the State of Iowa.

Dean A. Wilke 12/01/14
 Dean A. Wilke Date

License number 17048
 My license renewal date is December 31, 2015
 Pages or sheets covered by this seal: This page only

List Corners to be Indexed			
Corner	Section	Twp.	Range
NW CORNER E1/2 NW1/4	13	84N	38W
SW CORNER E1/2 NW1/4	13	84N	38W