

INDEXED ME
 FOLLOW UP ME
 PROOFED ME
 SCANNED ME

REC006217



Crawford Co Recorder Denise Mee
 FEE BOOK 2005-1039 4/25/2005 @ 10:45AM
 PLC PLAT CORNER CERBook: Page:05-1039 #: 1
 Total Fees: \$7.00

WARDER C. HILLHOUSE, JR. MHF ENGINEERING P.C. 300 W. MCKINLEY JEFFERSON, IA. (515)386-4101
UNITED STATES PUBLIC LAND SURVEY CORNER CERTIFICATE OF

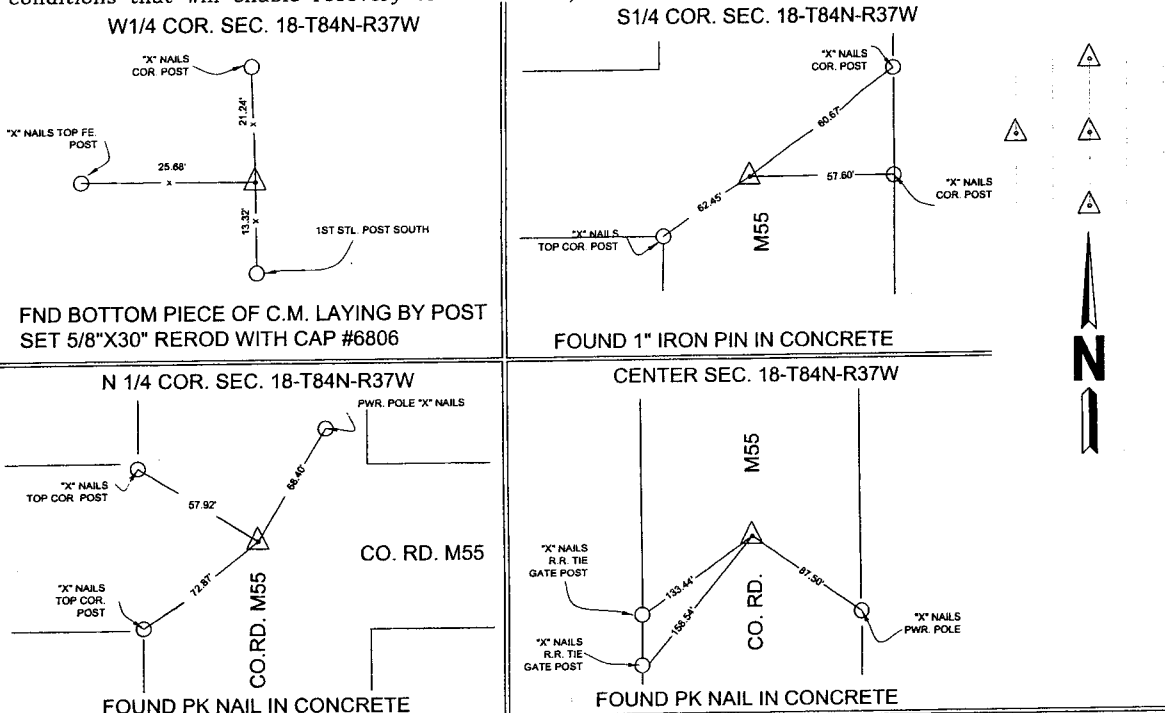
Land Survey Monuments in Section 18, Township 84, Range 37, of the Fifth Principal Meridian, CRAWFORD County, Iowa.
 Previously recorded in 552 - 47 in County Recorder's Office.
 (book, page, document number, etc.)

(Show reason for preparing this certificate, the evidence and detailed procedures used in establishing the corner positions and monumentation found or placed.)

Monument Description and Remarks: CORNERS LOCATED FOR SURVEY WORK IN SECTION

PLAN - VIEW

(Show a minimum of three reference ties to durable physical objects, relevant monuments and physical conditions that will enable recovery of the corner.)



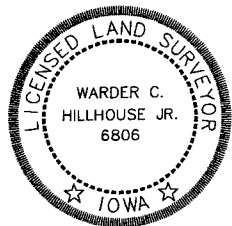
I hereby certify that this land surveying document and the related survey work was performed by me or under my direct personal supervision and that I am a duly licensed land surveyor under the laws of the state of Iowa.

Signature: Warder C. Hillhouse, Jr.
 Warder C. Hillhouse, Jr.

Date: 4/21/05 Lic. No. 6806

License Renewal Dec. 31, 2005

Date Surveyed: 3/23/05



Seal

List Corners to be Indexed			
Corners	Section	Twp	Range
W 1/4	18	84	37
N 1/4	18	84	37
S 1/4	18	84	37
CENTER	18	84	37

File No. 05041-1



M.H.F. ENGINEERING, P.C.
 ENGINEERS - LAND SURVEYORS
 Jefferson, Iowa 50129 Ph. (515)386-4101