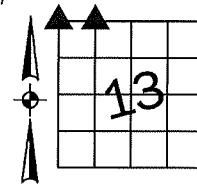


Denise Meeves RECORDER
 Crawford County, Iowa
 Instr. Number: 2021-2685
 Recorded: 11/17/2021 at 11:01:32.0 AM
 Pages 1
 County Recording Fee: \$7.00
 Iowa E-Filing Fee: \$3.13
 Combined Fee: \$10.13
 Revenue Tax:

PREPARED BY AND RETURN TO: MIKE SCHULTE, SCHULTE SURVEYING, INC., 2003 390TH STREET, WESTSIDE, IA 51467 (712) 790-3489

UNITED STATES PUBLIC LAND SURVEY CORNER CERTIFICATE OF
 LAND SURVEY MONUMENTS SITUATED IN SECTION 13, TOWNSHIP 84 NORTH, RANGE 38 WEST, OF THE FIFTH
 PRINCIPAL MERIDIAN, CRAWFORD COUNTY, IOWA. PREVIOUSLY RECORDED IN SEE BELOW IN COUNTY
(book, page instrument number)
 RECORDER'S OFFICE.

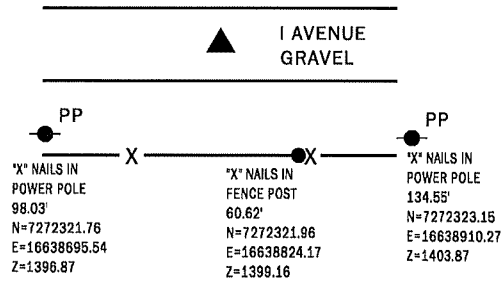
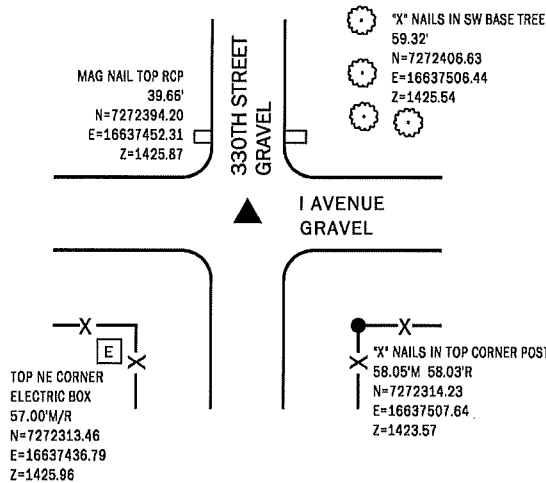


NW CORNER
 FND 1" I.P. 10" DEEP

N=7272359.14 E=16637470.87
 USED CERTIFICATE RECORDED IN INSTRUMENT NO. 2014-1670
 AND A METAL DETECTOR TO FIND A 1" IRON PIPE 10" DEEP AS
 DESCRIBED IN CERTIFICATE. VERIFIED MONUMENT WITH 2
 REMAINING TIES AND ACCEPTED AS SECTION CORNER.
 THIS CERTIFICATE IS BEING FILED TO UPDATE REFERENCE TIES.

NW CORNER NE1/4 NW1/4
 FND 5/8" REBAR OPC #17048 3" DEEP

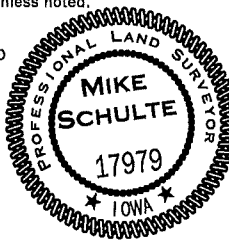
N=7272366.33 E=16638782.84
 USED CERTIFICATE RECORDED IN INSTRUMENT NO.
 2014-2452 AND A METAL DETECTOR TO FIND A 5/8" REBAR
 WITH OPC #17048 3" DEEP. VERIFIED MONUMENT WITH
 SURROUNDING FIELD EVIDENCE AND ACCEPTED AS SECTION
 CORNER.
 THIS CERTIFICATE IS BEING FILE TO RECORD REFERENCE TIES.



*All distances are measured horizontally unless noted.

I HEREBY CERTIFY THAT THIS LAND SURVEYING DOCUMENT WAS
 PREPARED BY ME OR UNDER MY DIRECT PERSONAL SUPERVISION AND
 THAT I AM A DULY LICENSED PROFESSIONAL LAND SURVEYOR UNDER
 THE LAWS OF THE STATE OF IOWA.

Mike Schulte
 MIKE SCHULTE
 LICENSE NUMBER: 17979
 LICENSE RENEWAL DATE IS DECEMBER 31, 2021
 PAGES COVERED BY THIS SEAL: 1 OF 1
 DATE: 2021/11/17



LIST CORNERS TO BE INDEXED

CORNER	SECTION	TWP	RANGE
NW CORNER	13	84	38
NE CORNER	14	84	38
SE CORNER	11	84	38
SW CORNER	12	84	38
NE CORNER NW1/4 NW1/4	13	84	38
SE CORNER SW1/4 SW1/4	12	84	38

BASIS OF BEARING

16RCS ZONE 6 - US SURVEY FEET
 16RTN DERIVED - NAD83(2011)EPOCH 2010.00

SCHULTE SURVEYING, INC.

DRAWN BY: MLS
 PROJ NUMBER: 21-087