

Denise Meeves RECORDER
 Crawford County, Iowa
 Instr. Number: 2021-0064
 Recorded: 1/11/2021 at 8:39:49.0 AM
 Pages 1
 County Recording Fee: \$7.00
 Iowa E-Filing Fee: \$3.13
 Combined Fee: \$10.13
 Revenue Tax:

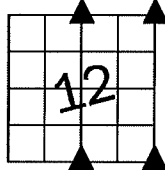
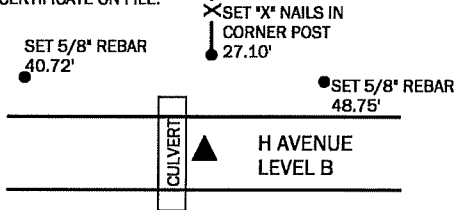
PREPARED BY AND RETURN TO: MIKE SCHULTE, SCHULTE SURVEYING, INC., 2003 390TH STREET, WESTSIDE, IA 51467 (712) 790-3489

UNITED STATES PUBLIC LAND SURVEY CORNER CERTIFICATE OF
 LAND SURVEY MONUMENTS SITUATED IN SECTION 12, TOWNSHIP 84 NORTH, RANGE 38 WEST, OF THE FIFTH
 PRINCIPAL MERIDIAN, CRAWFORD COUNTY, IOWA. PREVIOUSLY RECORDED IN SEE BELOW IN COUNTY
(book, page instrument number)
 RECORDER'S OFFICE.

*All distances are measured horizontally unless noted.

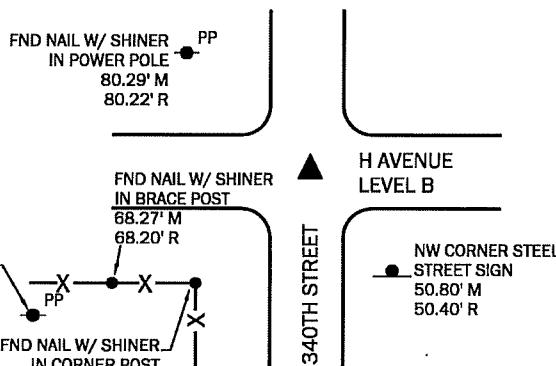
N1/4 CORNER

SET 5/8" REBAR YPC #17979 5" DEEP
 N=7277623.25 E=16640086.78
 USED COUNTY TIES, DUG A 2'X2'X2' HOLE, PROBED AND FOUND NOTHING. ASSUMED CONCRETE MONUMENT WAS DUG-OUT WHEN CULVERT WAS INSTALLED. SET 5/8" REBAR WITH YPC #17979 5" DEEP USING LOCAL EVIDENCE AND CO TIES. THIS CORNER CERTIFICATE IS BEING FILED BECAUSE THERE IS NO CERTIFICATE ON FILE.



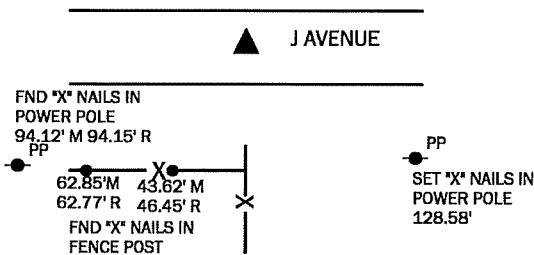
NE CORNER

FND PINCHED PIPE 16" DEEP
 SET 5/8" REBAR YPC # 17979 OVER
 N=7277646.14 E=16642706.62
 USED TIE RECORDED IN FEE BOOK 2006-2415 AND A METAL DETECTOR. FOUND A PINCHED PIPE 16" DEEP AS DESCRIBED IN CERTIFICATE. VERIFIED FOUND MONUMENT WITH 5 REMAINING TIES AND ACCEPTED AS SECTION CORNER. SET 5/8" REBAR WITH YPC #17979 OVER. THIS CORNER CERTIFICATE IS BEING FILED BECAUSE THE MONUMENT HAS BEEN CHANGED.



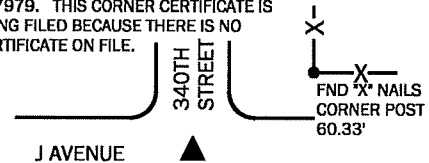
S1/4 CORNER

FND CONC. MON, SET 5/8" REBAR YPC #17979 OVER
 N=7272373.52 E=16640094.81
 USED TIES RECORDED IN INSTRUMENT NO. 2014-2453 AND A METAL DETECTOR. FOUND A CONCRETE MONUMENT 1.7' DEEP AS DESCRIBED IN CERTIFICATE. VERIFIED MONUMENT WITH 3 REMAINING TIES AND ACCEPTED AS SECTION CORNER. SET 5/8" X 12" REBAR WITH YPC #17979 OVER, 3" DEEP. THIS CORNER CERTIFICATE IS BEING FILED BECAUSE THE MONUMENT HAS BEEN CHANGED.



SE CORNER

FND SQUARE BOLT HEAD, 6" DEEP
 N=7272389.91 E=16642714.49
 NO RECORD OF CORNER. SET 5/8" REBAR WITH YPC #17979. THIS CORNER CERTIFICATE IS BEING FILED BECAUSE THERE IS NO CERTIFICATE ON FILE.

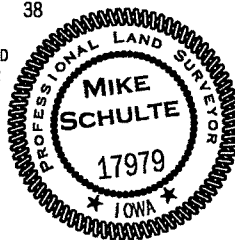


LIST CORNERS TO BE INDEXED

CORNER	SECTION	TWP	RANGE
N1/4 COR	12	84	38
S1/4 COR	1	84	38

I HEREBY CERTIFY THAT THIS LAND SURVEYING DOCUMENT WAS PREPARED BY ME OR UNDER MY DIRECT PERSONAL SUPERVISION AND THAT I AM A DULY LICENSED PROFESSIONAL LAND SURVEYOR UNDER THE LAWS OF THE STATE OF IOWA.

Mike Schulte
 MIKE SCHULTE
 LICENSE NUMBER: 17979
 LICENSE RENEWAL DATE IS DECEMBER 31, 2021
 PAGES COVERED BY THIS SEAL: 1 OF 1



LIST CORNERS TO BE INDEXED

CORNER	SECTION	TWP	RANGE
S1/4 COR	12	84	38
N1/4 COR	13	84	38
SE COR	12	84	38
NE COR	13	84	38
NW COR	18	84	37
SW COR	7	84	37
NE COR	12	84	38
NW COR	7	84	37
SW COR	6	84	37
SE COR	1	84	38

BASIS OF BEARING

laRCS ZONE 6 - US SURVEY FEET
 laRTN DERIVED - NAD83(2011)(EPOCH 2010.00)

SCHULTE SURVEYING, INC.

DRAWN BY: MLS
 PROJ NUMBER: 20-081