

INDEXED WV
 FOLLOW UP _____
 PROOFED _____

FILED DENISON, IOWA
 CRAWFORD COUNTY

97 AUG 12 AM 10:36

INST. NO. 97-1948
 DENISE MEEVES, RECORDER
Denise Meeves
 FEE \$ 6.00

WARDER C. HILLHOUSE, JR. MHF ENGINEERING P.C. 300 W. MCKINLEY JEFFERSON, IA. (515)386-4101

UNITED STATES PUBLIC LAND SURVEY CORNER CERTIFICATE OF

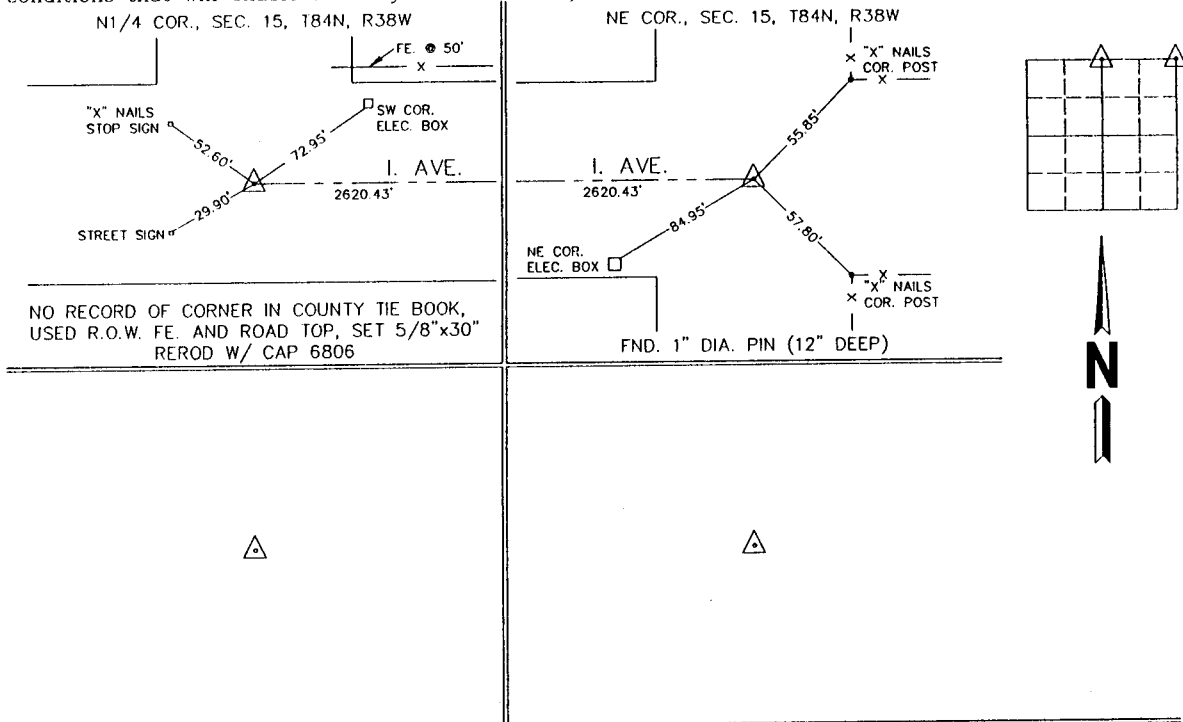
Land Survey Monuments in Section 15, Township 84, Range 38, of the Fifth Principal Meridian, CRAWFORD County, Iowa.
 Previously recorded in _____ in County Recorder's Office.
 (book, page, document number, etc.)

(Show reason for preparing this certificate, the evidence and detailed procedures used in establishing the corner positions and monumentation found or placed.)

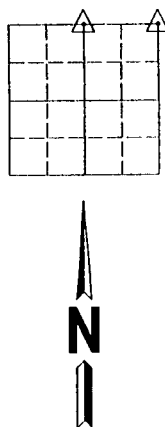
Monument Description and Remarks: _____

PLAN - VIEW

(Show a minimum of three reference ties to durable physical objects, relevant monuments and physical conditions that will enable recovery of the corner.)



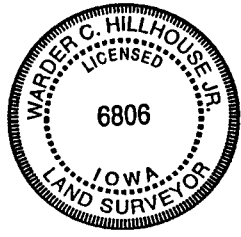
NO RECORD OF CORNER IN COUNTY TIE BOOK,
 USED R.O.W. FE. AND ROAD TOP, SET 5/8"x30"
 REROD W/ CAP 6806



I hereby certify that this survey work was completed and this certificate was prepared by me or under my direct personal supervision and that I am a duly licensed land surveyor under the laws of the state of Iowa.

Signature: Warder C. Hillhouse Jr.
 Name typed or printed: Warder C. Hillhouse, Jr.

Date: 8/11/97 Lic. No. 6806
 License Renewal Dec. 31, 1997
 Date Surveyed: 08/07/97



List Corners to be Indexed

Corners	Section	Twp	Range
N1/4 COR.	15	84	38
NE COR.	15	84	38

File No. 97126-1

M.H.F. ENGINEERING, P.C.
 ENGINEERS - LAND SURVEYORS
 Jefferson, Iowa 50129 Ph. (515)386-4101