

98 MAY 22 AM 10:08

INST. NO. 98-1643  
DENISE HEEVES, RECORDER  
*Denise Heeves*  
FEF. \$ 6.00

PREPARED BY: J. SCOTT SHEVEL L.S., KUEHL & PAYER LTD., P.O. BOX 458, 1725 N. LAKE AVE., STORM LAKE, IOWA 50588 TELEPHONE: (712)732-6292

**UNITED STATES PUBLIC LAND SURVEY CORNER CERTIFICATE**  
OF

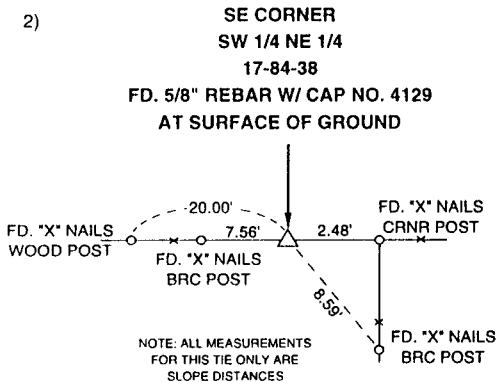
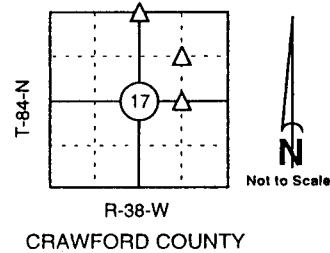
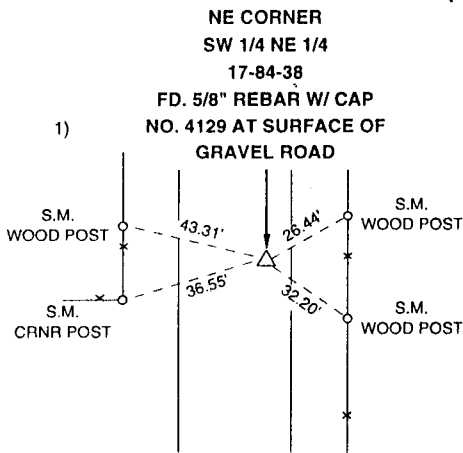
LAND SURVEY MONUMENTS SITUATED IN SECTION 17 TOWNSHIP 84 NORTH  
RANGE 38 WEST OF THE 5TH PRINCIPAL MERIDIAN; CRAWFORD COUNTY, IOWA

PREVIOUSLY RECORDED IN BOOK \_\_\_\_\_ PAGE \_\_\_\_\_

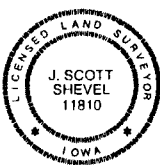
**MONUMENT DESCRIPTION AND REMARKS:**

- 1) NE CORNER SW 1/4 NE 1/4 17-84-38: FD. 5/8" REBAR WITH CAP NO. 4129 AT SURFACE OF GRAVEL ROAD
- 2) SE CORNER SW 1/4 NE 1/4 17-84-38: FD. 5/8" REBAR WITH CAP NO. 4129 AT SURFACE OF GROUND
- 3) N 1/4 CORNER 17-84-38: FOUND CONCRETE MONUMENT 4" ABOVE GROUND

**PLAN - VIEW**



S.M. = SURVEY MARKER  
PLASTIC DISK AS SHOWN BELOW



I hereby certify that this land surveying document was prepared and the related survey work was performed by me or under my direct personal supervision and that I am a duly licensed Land Surveyor under the laws of the State of Iowa.

*J. Scott Shevel* Date 5/21/98  
J. Scott Shevel  
License Number 11810  
My license renewal date is December 31, 1999  
Pages covered by this seal: 1

**List Corners to be Indexed**

Corners	Section	Twp.	Range
1) NE SW 1/4 NE 1/4	17	84	38
2) SE SW 1/4 NE 1/4	17	84	38
3) N 1/4	17	84	38

PN: 980046  
DRAWN: JMK