

97 SEP -3 AM 10:19

INST. NO. 97-2128  
DENISE MEEVES, RECORDER  
*Denise Meeves*  
FEE 6.00

INDEXED DM  
FOLLOW UP ME  
PROOFED ✓

This document prepared by: Semke & Associates - 712-792-2276  
Michael G. Semke, L.S.#10318 - 608 N. Court St., Carroll, Iowa

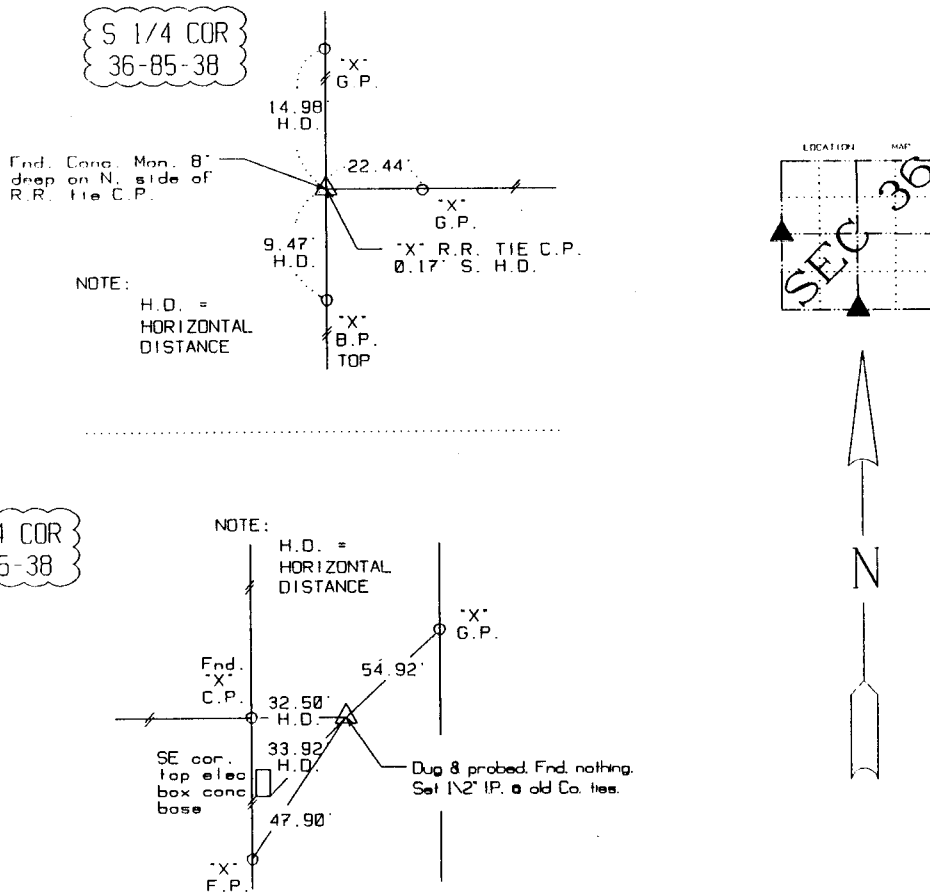
UNITED STATES PUBLIC LAND SURVEY CORNER CERTIFICATE  
OF

Land Survey Monuments situated in Section 36, Township 85, Range 38, of the Fifth Principal Meridian, Crawford County, Iowa. Previously recorded in \_\_\_\_\_ in County Recorder's Office.  
(book, page, document number, etc.)

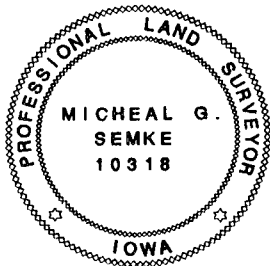
(Show reason for preparing this certificate, the evidence and detailed procedures used in establishing the corner positions and monumentation found or placed.)

PLAN - VIEW

(Show a minimum of three reference ties to durable physical objects, relevant monuments and physical conditions that will enable recovery of the corner.)



Note: All ties slope chained unless noted.



I HEREBY CERTIFY THAT THIS CORNER CERTIFICATE WAS PREPARED BY ME OR UNDER MY DIRECT PERSONAL SUPERVISION AND THAT I AM A PROFESSIONAL LAND SURVEYOR UNDER THE LAWS OF THE STATE OF IOWA. MY REGISTRATION IS SUBJECT TO RENEWAL 12-31-97.

9-11-97 *Michael G. Semke*  
DATE MICHAEL G. SEMKE, RLS NO 10318

Corners	List Corners to be Indexed		
	Section	Twp	Range
W 1/4	36	85	38
E 1/4	35	85	38
S 1/4	36	85	38
N 1/4	1	84	38