

INDEXED  
FILED  
PROJECT  
DATE

Crawford County Recorder  
Denise Meeves  
Fee Book 2010-1306

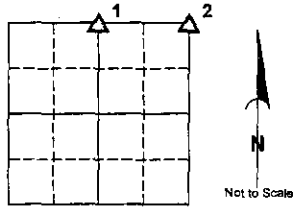
06/25/2010 @09:38AM  
PLC PLAT CORNER CER  
Book: Page: # Pages: 1  
Total Fees: \$9.00

PREPARED BY AND RETURN TO: JEFFREY M. KRUEGER P.L.S., KUEHL AND PAYER LTD., 2002 WEST MAIN ST., SAC CITY, IA 50583 PH. (712)662-7859

**UNITED STATES PUBLIC LAND SURVEY CORNER CERTIFICATE  
OF**

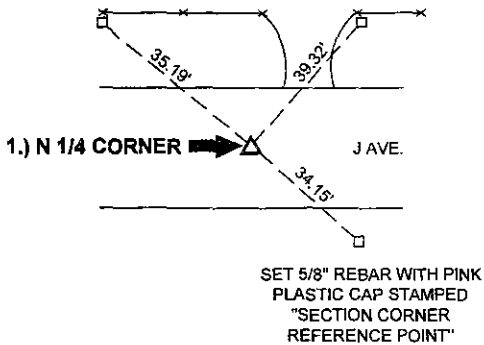
LAND SURVEY MONUMENTS SITUATED IN SECTION 20,  
TOWNSHIP 84 NORTH, RANGE 38 WEST  
OF THE 5TH P.M., CRAWFORD COUNTY, IOWA.

SECTION 20



SET 5/8" REBAR WITH PINK  
PLASTIC CAP STAMPED  
"SECTION CORNER  
REFERENCE POINT"

SET 5/8" REBAR WITH PINK  
PLASTIC CAP STAMPED  
"SECTION CORNER  
REFERENCE POINT"



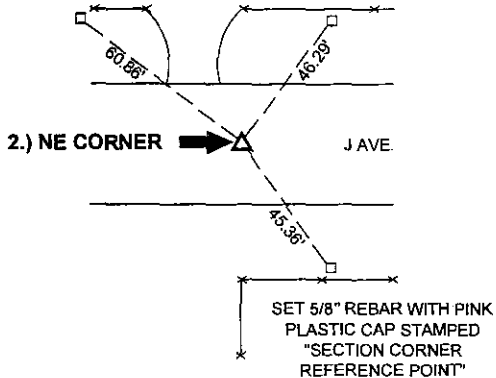
**1.) N 1/4 CORNER 20-84-38 CRAWFORD COUNTY, IOWA:**

REFERENCE TIES FROM THE CRAWFORD COUNTY ENGINEER'S OFFICE INDICATE THAT A CONCRETE MONUMENT WAS SET AT THIS CORNER ON 6/5/1940. DUG 40" X 20" X 5" HOLE AND FOUND NOTHING. SET 5/8" REBAR WITH ORANGE PLASTIC CAP STAMPED "J KRUEGER 16749", 8" DEEP, EQUIDISTANT AND ONLINE BETWEEN THE NW CORNER AND NE CORNER.

THIS CERTIFICATE IS BEING PREPARED BECAUSE: THERE IS NO CERTIFICATE FOR THE CORNER ON FILE WITH THE RECORDER OF THE COUNTY IN WHICH THE CORNER IS LOCATED.

SET 5/8" REBAR WITH PINK  
PLASTIC CAP STAMPED  
"SECTION CORNER  
REFERENCE POINT"

SET 5/8" REBAR WITH PINK  
PLASTIC CAP STAMPED  
"SECTION CORNER  
REFERENCE POINT"



**2.) NE CORNER 20-84-38 CRAWFORD COUNTY, IOWA:**

FOUND 3/4" BOLT, 6" DEEP, NEAR CENTERLINE OF COUNTY DIRT ROAD. REFERENCE TIES FROM CRAWFORD COUNTY ENGINEER'S OFFICE INDICATE THAT THE MONUMENT WAS AN IRON BAR OVER A CONCRETE MONUMENT. PROBED BESIDE THE FOUND BOLT AND HIT CONCRETE MONUMENT APPROXIMATED 24" DEEP.

THIS MONUMENT MATCHES WITHIN REASON THE POSITION AND MONUMENTATION SHOWN ON EXISTING CRAWFORD COUNTY ENGINEER'S OFFICE SECTION CORNER REFERENCE TIES.

THIS CERTIFICATE IS BEING PREPARED BECAUSE: THERE IS NO CERTIFICATE FOR THE CORNER ON FILE WITH THE RECORDER OF THE COUNTY IN WHICH THE CORNER IS LOCATED.

I hereby certify that this land surveying document was prepared and the related survey work was performed by me or under my direct personal supervision and that I am a duly licensed Land Surveyor under the laws of the State of Iowa.

S.M. = SURVEY MARKER  
PLASTIC REFERENCE DISK  
AS SHOWN BELOW

**List Corners to be Indexed**

Corners	Section	Township	Range
1) N 1/4	20	84	38
2) NE	20	84	38



Jeffrey M. Krueger Date: 6/22/2010  
License Number 16749  
My license renewal date is December 31, 2010  
Pages covered by this seal 1



PN: 100546  
DRAWN: JMK