


□ □ 
 Crawford County Recorder Denise Meeves
 Fee Book 2007-1465 REC014664
 05/31/2007 0944AM # Pages 1
 PLC PLAT CORNER CER
 Total Fees: \$7.00

INDEXED
 FILED
 RECORDED
 SEARCHED
 SERIALIZED
 JUN 1 2007
 DENISON, IOWA

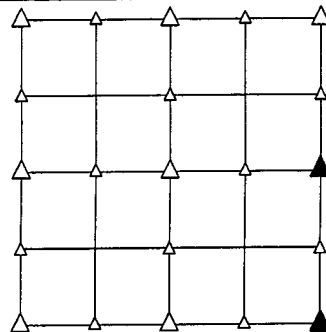
PREPARED BY - TERENCE E. CRAWFORD - SUNDQUIST ENGINEERING - 120 S. MAIN, DENISON, IOWA 51442 - PHONE (712) 263-8118

UNITED STATES PUBLIC LAND SURVEY CORNER CERTIFICATE OF

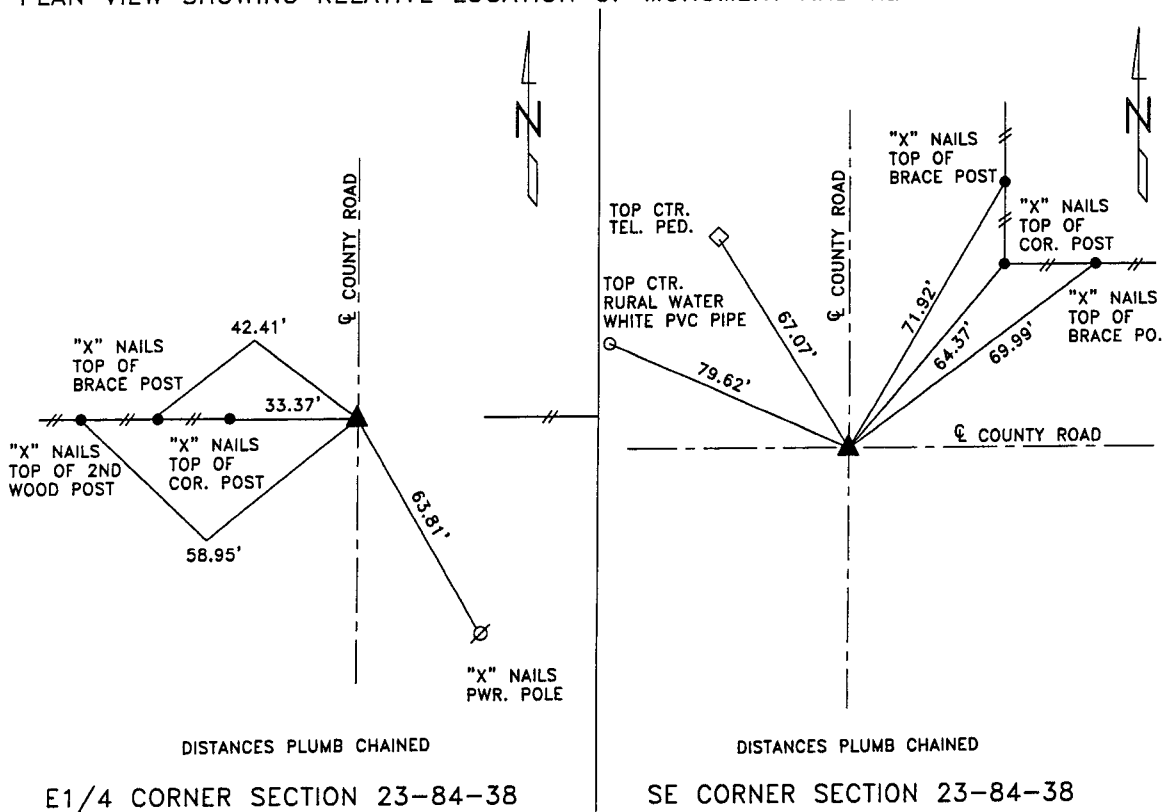
LAND SURVEY MONUMENT SITUATED IN SECTION 23, T 84 N, R 38 W OF
 THE 5TH P.M., CRAWFORD COUNTY, IOWA.
 PREVIOUSLY RECORDED IN BOOK _____, PAGE _____, OTHER _____

MONUMENT DESCRIPTION AND REMARKS

E1/4 CORNER - FOUND 80D SPIKE, RAISED WITH 5/8" DIA. X 18" IRON PIN W/YELLOW CAP #8893 0.5' DEEP OVER SPIKE.
 SE CORNER - SET 5/8" DIA. X 18" IRON PIN W/YELLOW CAP #8893 0.4' DEEP, SET CORNER FROM OLD COUNTY ROAD PLANS.

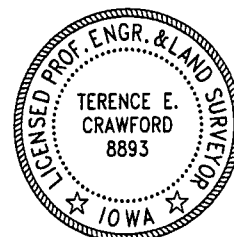


PLAN VIEW SHOWING RELATIVE LOCATION OF MONUMENT AND REFERENCE POINTS.



I HEREBY CERTIFY THAT THIS LAND SURVEYING DOCUMENT WAS PREPARED AND THE RELATED SURVEY WORK WAS PERFORMED BY ME OR UNDER MY DIRECT PERSONAL SUPERVISION AND THAT I AM A DULY LICENSED LAND SURVEYOR UNDER THE LAWS OF THE STATE OF IOWA.


 TERENCE E. CRAWFORD DATE MAY 03 2007
 IA LICENSE NO. 8893 EXP. DATE DECEMBER 31, 2007



SE PROJECT NO. 21507
 DRAWN BY: LLL