

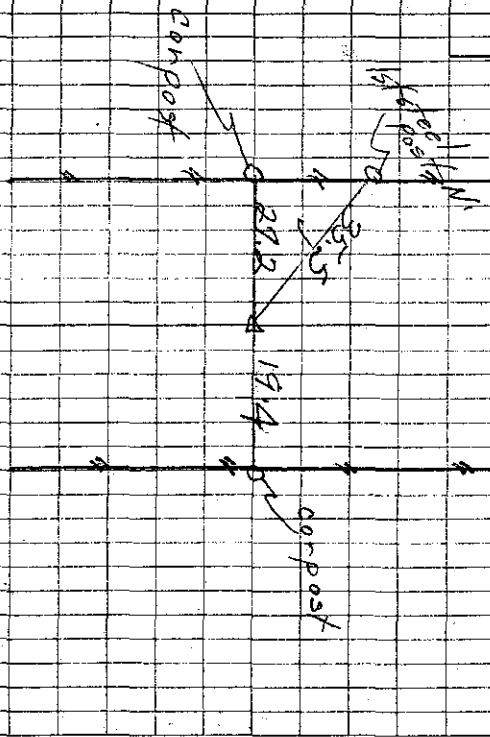
26/25

Found 6-10-40. 1 foot 80/120/160
 brick bats, remains of old 10' x 4' hole
 16" deep. Lowered and set of G.M.
 Found by ties from B.M. 60, 80, 111
 Ties from K. 5 ft. 10 in. on posts
 29.2 S.E. from 1st steel post W.
 29.2 E. " " cor. post
 19.4 W. " " " "

23 4-13-40 dug - 5' x 15' x 6" hole lined
 26 N. x S. fences 6' cut at this place
 No find

27 7000 ft

24-46



Found 6-10-40
 OK 11 8-21-56 Richards

24-13.5

5000 ft

27