

Crawford County Recorder Denise Meeves  
 Fee Book 2007-1465 REC014664  
 05/31/2007 0944AM # Pages 1  
 PLC PLAT CORNER CER  
 Total Fees: \$7.00

REVIEWED  
 FOLLOW UP  
 PREPARED  
 DRAWN  
 CHECKED  
 DATE

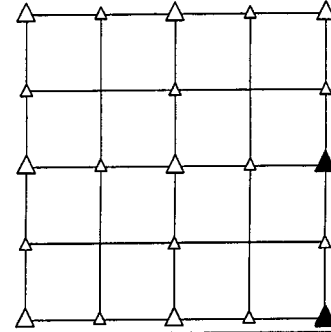
PREPARED BY - TERENCE E. CRAWFORD - SUNDQUIST ENGINEERING - 120 S. MAIN, DENISON, IOWA 51442 - PHONE (712) 263-8118

## UNITED STATES PUBLIC LAND SURVEY CORNER CERTIFICATE OF

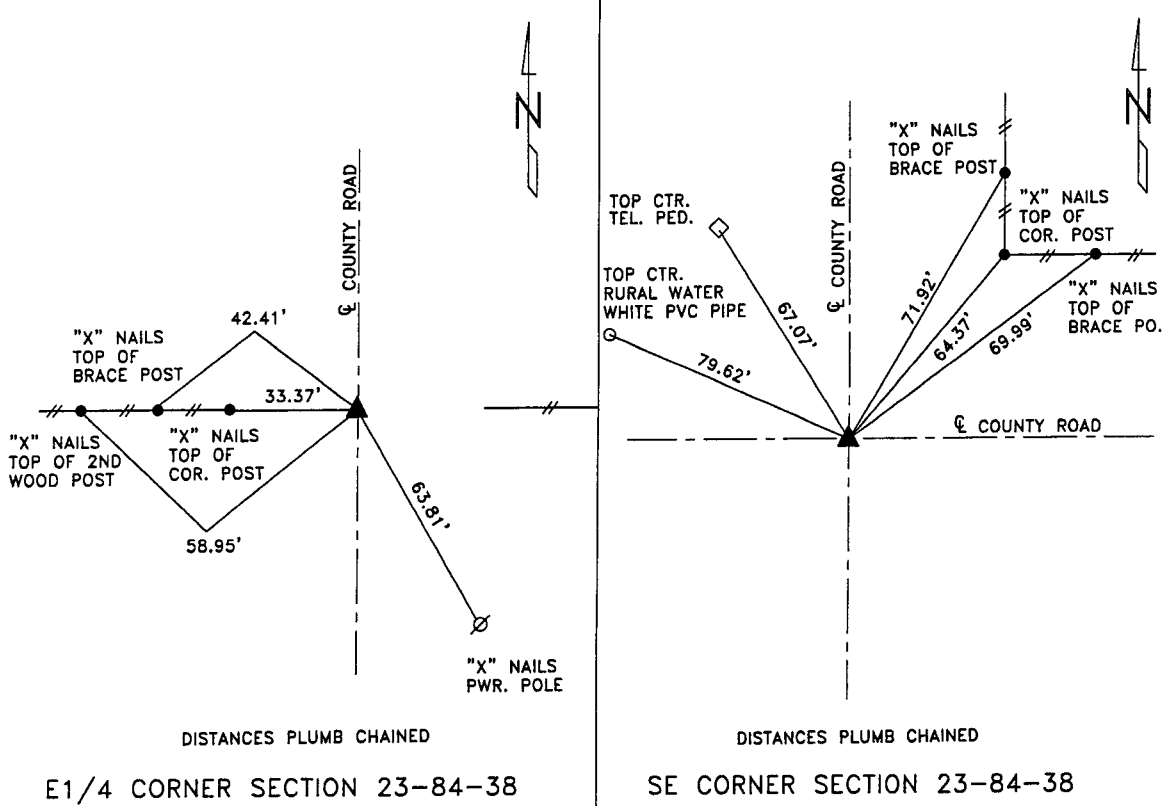
LAND SURVEY MONUMENT SITUATED IN SECTION 23, T 84 N, R 38 W OF  
 THE 5TH P.M., CRAWFORD COUNTY, IOWA.  
 PREVIOUSLY RECORDED IN BOOK \_\_\_\_\_, PAGE \_\_\_\_\_, OTHER \_\_\_\_\_

### MONUMENT DESCRIPTION AND REMARKS

E1/4 CORNER - FOUND 80D SPIKE, RAISED WITH 5/8" DIA. X 18" IRON PIN W/YELLOW CAP #8893 0.5' DEEP OVER SPIKE.  
 SE CORNER - SET 5/8" DIA. X 18" IRON PIN W/YELLOW CAP #8893 0.4' DEEP, SET CORNER FROM OLD COUNTY ROAD PLANS.

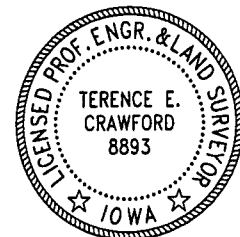


### PLAN VIEW SHOWING RELATIVE LOCATION OF MONUMENT AND REFERENCE POINTS.



I HEREBY CERTIFY THAT THIS LAND SURVEYING DOCUMENT WAS PREPARED AND THE RELATED SURVEY WORK WAS PERFORMED BY ME OR UNDER MY DIRECT PERSONAL SUPERVISION AND THAT I AM A DULY LICENSED LAND SURVEYOR UNDER THE LAWS OF THE STATE OF IOWA.

  
 TERENCE E. CRAWFORD  
 IA LICENSE NO. 8893  
 DATE MAY 03 2007  
 EXP. DATE DECEMBER 31, 2007



SE PROJECT NO. 21507  
 DRAWN BY: LLL