



INDEXED
FOLLOW UP
PROOF
SCANNED

Crawford County Recorder Denise Meeves
FEE BOOK 2005-3032 11/07/2005 @ 01:23PM
PIC PLAT CORNER CERBook: Page:05-3032 #: 1
Total Fees: \$7.00

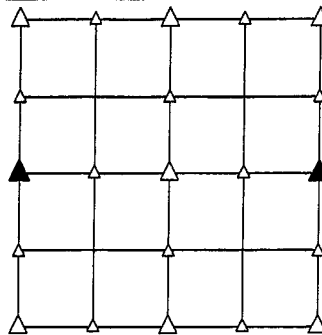
PREPARED BY - TERENCE E. CRAWFORD - SUNDQUIST ENGINEERING - 120 S. MAIN, DENISON, IOWA 51442 - PHONE (712) 263-8118

UNITED STATES PUBLIC LAND SURVEY CORNER CERTIFICATE OF

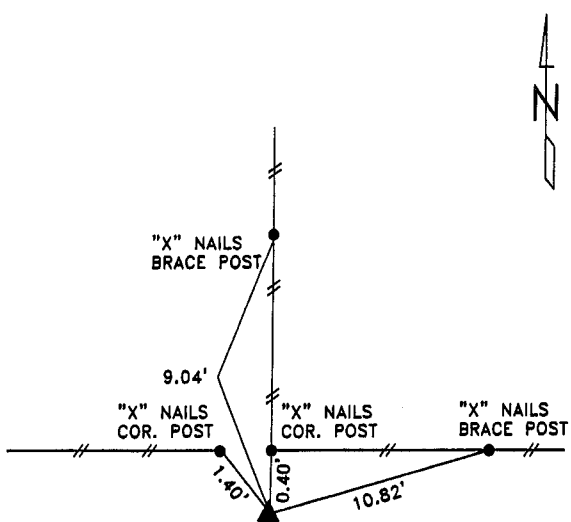
LAND SURVEY MONUMENT SITUATED IN SECTION 28, T 84 N, R 38 W OF
THE 5TH P.M., CRAWFORD COUNTY, IOWA.
PREVIOUSLY RECORDED IN BOOK , PAGE , OTHER

MONUMENT DESCRIPTION AND REMARKS

W1/4 CORNER - SET 5/8" DIA. X 18" IRON PIN W/YELLOW CAP #8893 FLUSH, SET FROM LOCAL EVIDENCE.
E1/4 CORNER - FOUND 4"X6"X12" STONE 1.1' DEEP, SET 5/8" DIA. IRON PIN ON SOUTH SIDE OF STONE 0.3' BELOW TOP OF STONE.

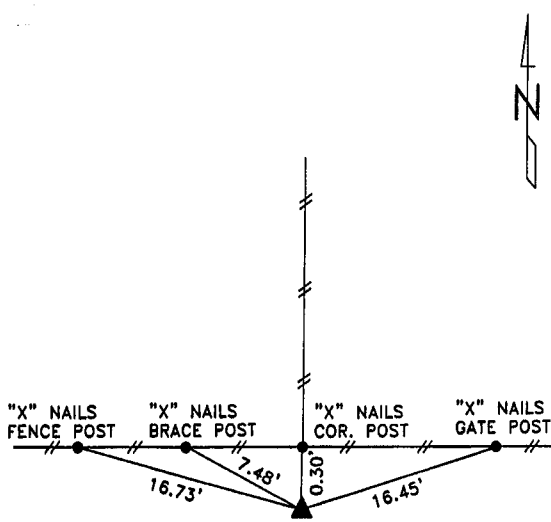


PLAN VIEW SHOWING RELATIVE LOCATION OF MONUMENT AND REFERENCE POINTS.



DISTANCES SLOPE CHAINED

W1/4 CORNER SECTION 28-84-38



DISTANCES SLOPE CHAINED

E1/4 CORNER SECTION 28-84-38

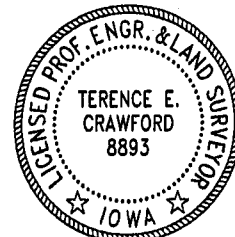
I HEREBY CERTIFY THAT THIS LAND SURVEYING DOCUMENT WAS PREPARED AND THE RELATED SURVEY WORK WAS PERFORMED BY ME OR UNDER MY DIRECT PERSONAL SUPERVISION AND THAT I AM A DULY LICENSED LAND SURVEYOR UNDER THE LAWS OF THE STATE OF IOWA.

Terence E. Crawford

NOV 03 2005

TERENCE E. CRAWFORD
IA LICENSE NO. 8893

DATE
EXP. DATE DECEMBER 31, 2005



SE PROJECT NO. 25105
DRAWN BY: LLL