



PREPARED BY - TERENCE E. CRAWFORD - SUNDQUIST ENGINEERING - 120 S. MAIN, DENISON, IOWA 51442 - PHONE (712) 263-8118

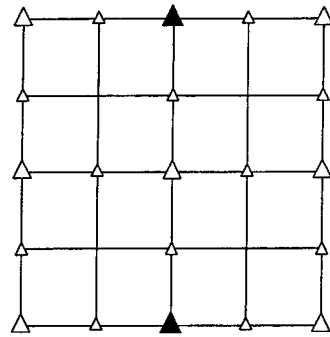
UNITED STATES PUBLIC LAND SURVEY CORNER CERTIFICATE OF

LAND SURVEY MONUMENT SITUATED IN SECTION 21, T 84 N, R 38 W OF THE 5TH P.M., CRAWFORD COUNTY, IOWA. PREVIOUSLY RECORDED IN BOOK _____, PAGE _____, OTHER _____

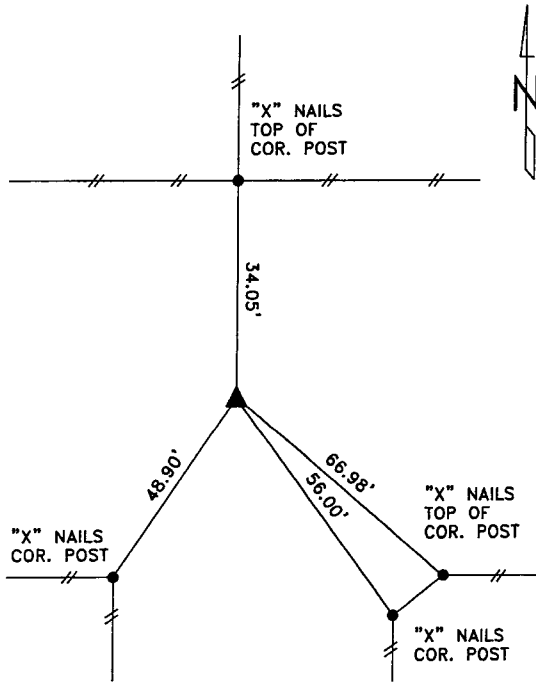
MONUMENT DESCRIPTION AND REMARKS

N1/4 CORNER - FOUND 1" BOLT OVER CM 5" DEEP.

S1/4 CORNER - FOUND CM 1.3' DEEP.

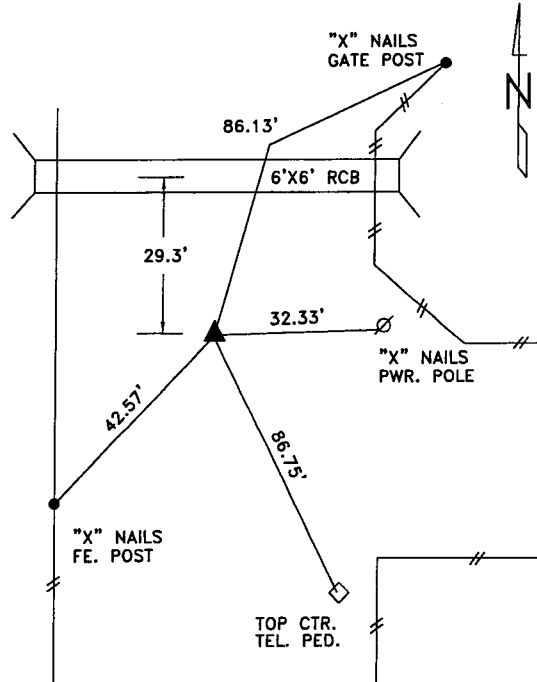


PLAN VIEW SHOWING RELATIVE LOCATION OF MONUMENT AND REFERENCE POINTS.



DISTANCES SLOPE CHAINED

N1/4 CORNER SECTION 21-84-38



DISTANCES SLOPE CHAINED

S1/4 CORNER SECTION 21-84-38

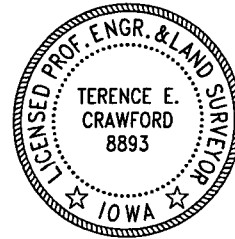
I HEREBY CERTIFY THAT THIS LAND SURVEYING DOCUMENT WAS PREPARED AND THE RELATED SURVEY WORK WAS PERFORMED BY ME OR UNDER MY DIRECT PERSONAL SUPERVISION AND THAT I AM A DULY LICENSED LAND SURVEYOR UNDER THE LAWS OF THE STATE OF IOWA.

Terence E. Crawford

MAY 17 2005

TERENCE E. CRAWFORD
IA LICENSE NO. 8893

DATE
EXP. DATE DECEMBER 31, 2005



SE PROJECT NO. 22805
DRAWN BY: LLL