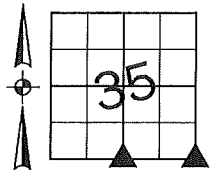


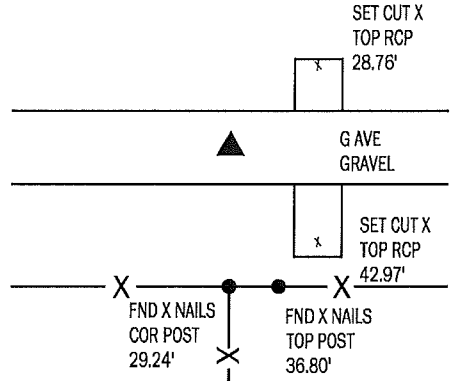
Denise Meeves RECORDER
Crawford County, Iowa
Instr. Number: 2018-1623
Recorded: 8/14/2018 at 12:08:47.0 PM
Pages 1
Fee Amount: \$7.00
Revenue Tax:

PREPARED BY AND RETURN TO: MIKE SCHULTE, SCHULTE SURVEYING, INC., 2003 390TH STREET, WESTSIDE, IA 51467 (712) 790-3489

UNITED STATES PUBLIC LAND SURVEY CORNER CERTIFICATE OF
LAND SURVEY MONUMENTS SITUATED IN SECTION 35, TOWNSHIP 85 NORTH, RANGE 38 WEST, OF THE FIFTH
PRINCIPAL MERIDIAN, CRAWFORD COUNTY, IOWA. PREVIOUSLY RECORDED IN SEE BELOW IN COUNTY
RECORDER'S OFFICE. (book, page instrument number)

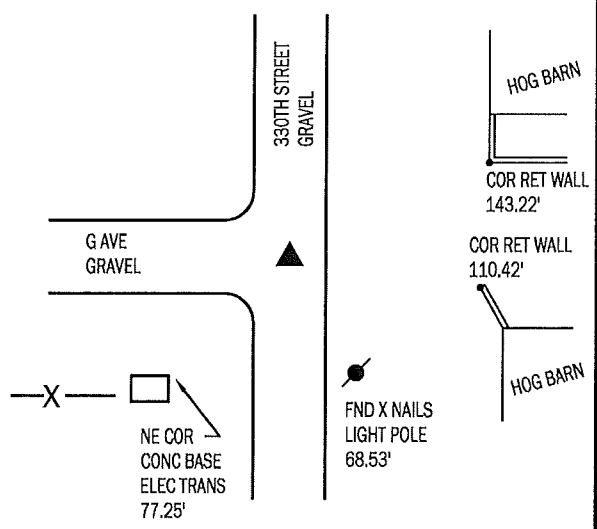


SOUTH 1/4 CORNER
FND 1/2" REBAR 3" DEEP
N: 7283332.55 E: 16634793.58



USED TIES RECORDED IN BOOK 2006-2438 TO FIND 1/2" REBAR 3" DEEP. VERIFIED MONUMENT WITH CURRENT TIE ANS RETIED CORNER BECAUSE PREVIOUS TIES ARE NOW MISSING.

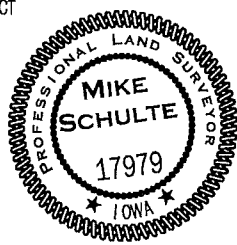
SE CORNER
FND 1/2" REBAR 3" DEEP
N: 7283314.69 E: 16637418.16



USED TIES RECORDED IN BOOK 2006-2439 TO FIND 1/2" REBAR 3" DEEP. MANY OF THE PREVIOUS TIES ARE NOW MISSING, SO THE CORNER WAS RETIED.

I HEREBY CERTIFY THAT THIS LAND SURVEYING DOCUMENT WAS PREPARED BY ME OR UNDER MY DIRECT PERSONAL SUPERVISION AND THAT I AM A DULY LICENSED PROFESSIONAL LAND SURVEYOR UNDER THE LAWS OF THE STATE OF IOWA.

Mike Schulte
MIKE SCHULTE
2018/08/14
DATE
LICENSE NUMBER: 17979
LICENSE RENEWAL DATE IS DECEMBER 31, 2019
PAGES COVERED BY THIS SEAL: 1 OF 1



*All distances are measured horizontally unless noted.

LIST CORNERS TO BE INDEXED

CORNER	SECTION	TWP	RANGE
S1/4 COR	35	85	38
N1/4 COR	2	84	38
SE COR	35	85	38
SW COR	36	85	38
NW COR	1	84	38
NE COR	2	84	38

BASIS OF BEARING

1aRCS ZONE 6 - US SURVEY FEET
1aRTN DERIVED - NAD83(2011)(EPOCH 2010.00)