

INDEXED DM  
 FOLLOW UP ME  
 PROOFED \_\_\_\_\_  
 SCANNED \_\_\_\_\_

REC015212  
 Crawford County Recorder  
 Denise Meeves  
**Fee Book 2007-1952**  
 07/17/2007 @02:12PM  
 PLC PLAT CORNER CER # Pages: 1  
 Book: Page: \$7.00  
 Total Fees:

WILKE LAND SURVEYING 401 1800th Street Panama, Iowa 51562 (712)489-2898

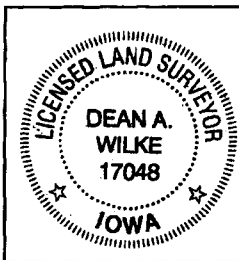
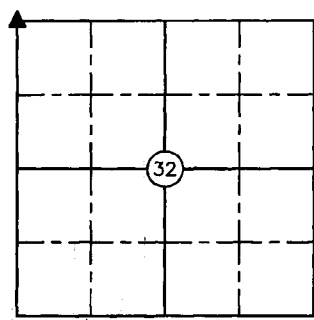
**UNITED STATES PUBLIC LAND SURVEY CORNER CERTIFICATE**

SECTION 32 TOWNSHIP 84N RANGE 38W COUNTY CRAWFORD

Certificate Prepared For: Survey of Lot 1 of Part of the S1/4 NW1/4 & Part of the NW1/4 SW1/4

Monument Description and Remarks:

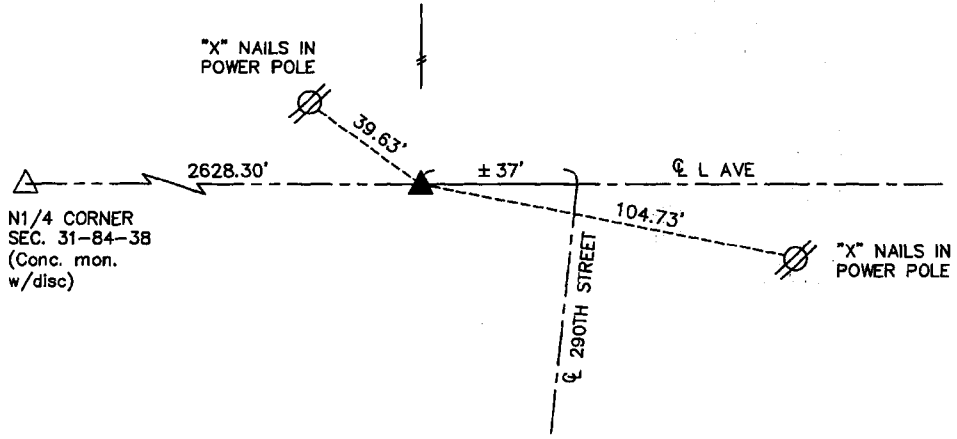
Found 60d nail with flagging in center of county road that lined up with fence line North and was above a large culvert under the road. Records at the Crawford County Engineer's Office note that in 1981 the concrete monument was not found and that it was lost when the culvert was placed. Replaced the 60d nail with a 5/8" dia. by 24" rebar w/orange cap PLS #17048 (0.1' deep).



I hereby certify that this land surveying document was prepared and the related survey work was performed by me or under my direct personal supervision and that I am a duly licensed Land Surveyor under the laws of the State of Iowa.

*Dean A. Wilke* 7/17/07  
 Dean A. Wilke Date

License number 17048  
 My license renewal date is December 31, 2007  
 Pages or sheets covered by this seal: This page only



All Distances Horizontal.

SET 5/8" DIA. BY 24" REBAR W/ORANGE CAP  
 PLS #17048 (0.1' DEEP)

List Corners to be Indexed			
Corner	Section	Twp.	Range
NW Corner	32	84N	38W