

INDEXED \_\_\_\_\_  
 FOLLOW UP \_\_\_\_\_  
 PROOFED \_\_\_\_\_  
 SCANNED \_\_\_\_\_

Instrument #: 2020-2935  
 12/31/2020 09:39:30 AM Total Pages: 1  
 PLC PLAT COR CERT  
 Recording Fee: \$7.00 Transfer Tax: \$0  
 Denise Meeves, Recorder, Crawford County Iowa



WILKE LAND SURVEYING INC. 401 1800th Street Panama, Iowa 51562 (712)489-2898

**UNITED STATES PUBLIC LAND SURVEY CORNER CERTIFICATE**

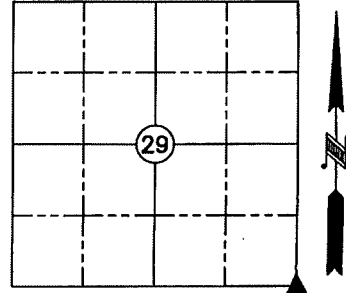
SECTION 29 TOWNSHIP 84N RANGE 38W COUNTY CRAWFORD

Reason for Certificate: Set & used monument to mark the

Monument Description and Remarks:

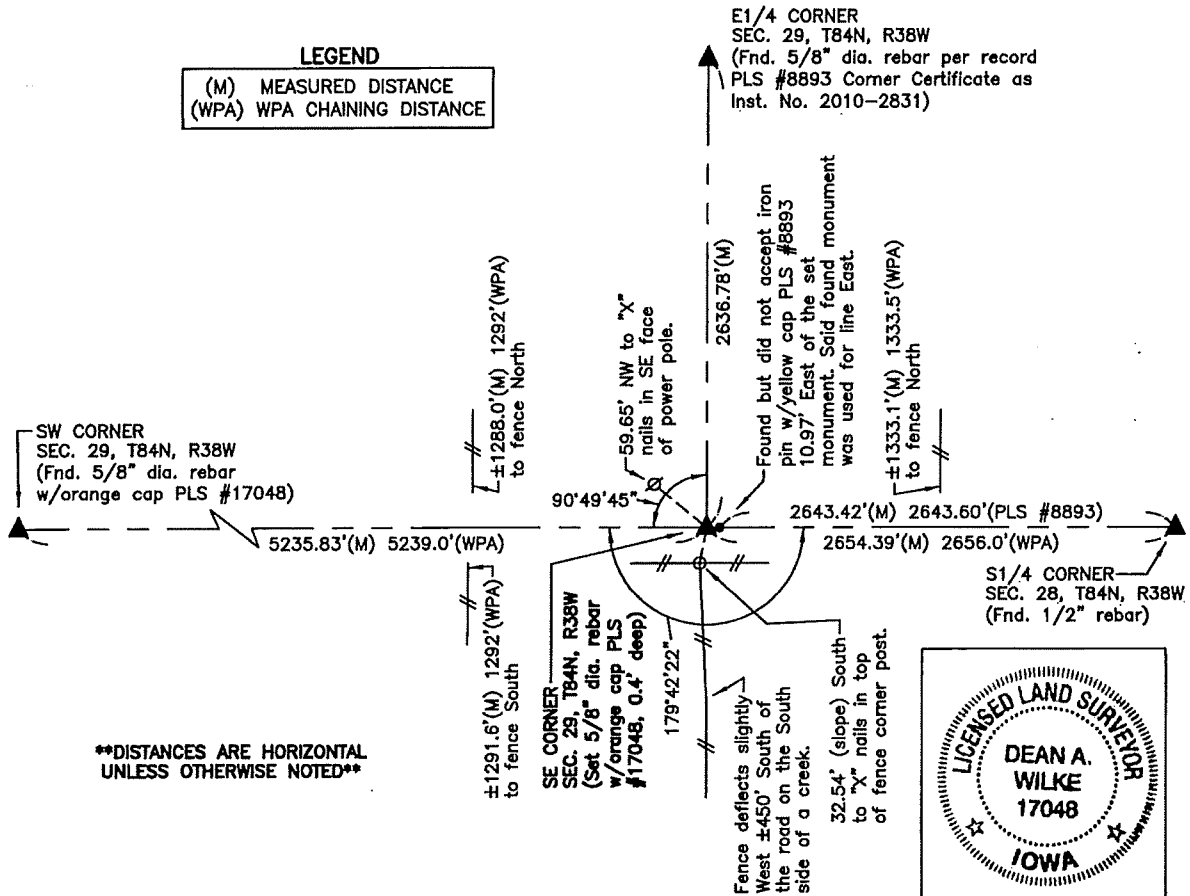
East line of the SE1/4 of Sec. 29

SE CORNER - Found the record 5/8" diameter rebar with a yellow cap PLS #8893 ±13' East of a fence South per record Corner Certificate as Inst. No. 2010-2831 at the Crawford County Recorder's Office. Said found monument was not accepted as the Section Corner, but it was held for line East. Set a 5/8" diameter by 24" long rebar with an orange cap PLS #17048 (0.4' deep) at distances proportioned to WPA chaining notes, and by using said found PLS #8893 monument for line East. The fence South of the set monument deflects slightly West ±450' South of the road on the South side of a creek. The set monument fits well with the fence and power pole alignment South of said creek and deflection, but is ±2.5' East of the fence corner post in the South right-of-way fence. The set monument location checks with WPA chaining distances to 1/4 1/4 fences East & West. This monument was set and used to set steel fence posts along the East line of the SE1/4 of Section 29. No survey will be filed.

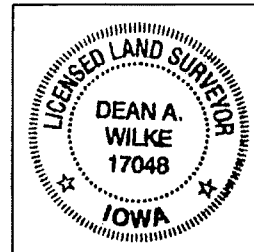


**LEGEND**

(M) MEASURED DISTANCE  
 (WPA) WPA CHAINING DISTANCE



\*\*DISTANCES ARE HORIZONTAL UNLESS OTHERWISE NOTED\*\*



List Corners to be Indexed			
Corner	Section	Twp.	Range
SE CORNER	29	84N	38W

I hereby certify that this land surveying document was prepared and the related survey work was performed by me or under my direct personal supervision and that I am a duly licensed Land Surveyor under the laws of the State of Iowa.

*Dean A. Wilke* 12/28/2020  
 Dean A. Wilke Date

License number 17048

My license renewal date is December 31, 2021

Pages or sheets covered by this seal: This page only