

2004 JAN 20 PM 2:01

2004-0156

DENISE MEEVES, RECORDER

*Denise Meeves*  
RECORDER

George A. Parris, PE/LS, JEO Consulting Group, Inc., 724 Simon Avenue, Carroll, Iowa 51401, 712-792-9711

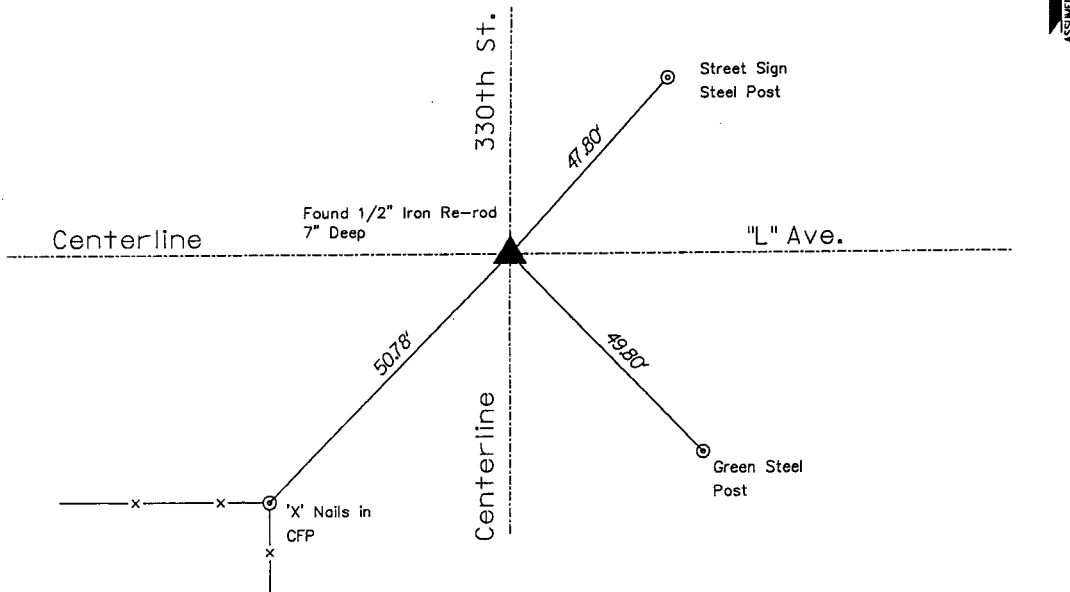
### UNITED STATES PUBLIC LAND SURVEY CORNER CERTIFICATE

Land Survey Monument Situated in Section 36  
Township 84 North Range 38 West, of the 5th P.M.  
CRAWFORD County, Iowa.

#### Monument Description and Remarks:

Found 1/2 inch iron re-rod located centerline/centerline of gravel road intersection.  
Re-rod is 7 inches deep.

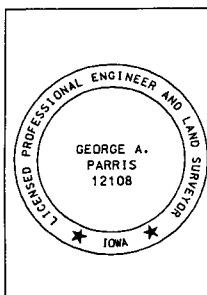
#### PLAN - VIEW NORTHWEST CORNER SECTION 36 - T 84 N - R 38 W



NO SCALE

All ties are "X" nails unless noted otherwise

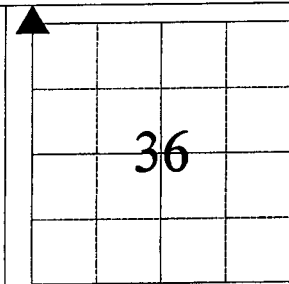
1227SU20



I hereby certify that this land surveying document was prepared and the related survey work was performed by me or under my direct personal supervision and that I am a duly licensed Land Surveyor under the laws of the State of Iowa.

*George A. Parris* 1-7-04  
George A. Parris Date  
My license renewal date is December 31, 2004

Sheets covered by this seal:  
ALL



List Corner to be Indexed

Corner	Section	Twp	Range
NW	36	84	38

**JEO**  
Consulting  
Group, Inc.

712792-8711  
724 SIMON AVENUE  
CARROLL, IOWA  
51401

CORPORATE OFFICE  
40840-4811  
P.O. BOX 287  
WACO, TX  
76798

BRANCH OFFICES  
DIXON CITY, IA  
31803A-3008

LINCOLN, NE  
40248-3048

HASTINGS, NE  
40740-3827

NORFOLK, NE  
40207-0418

NEBRASKA CITY, NE  
40208-0708

NEW RICHMOND, NE  
712048-4372

<http://www.jeo.com>