

2004 JAN 20 PM 2:07

INST. NO. *2004-0162*

DENISE MEEVES, RECORDER

Denise Meeves
 FEB 11 2004

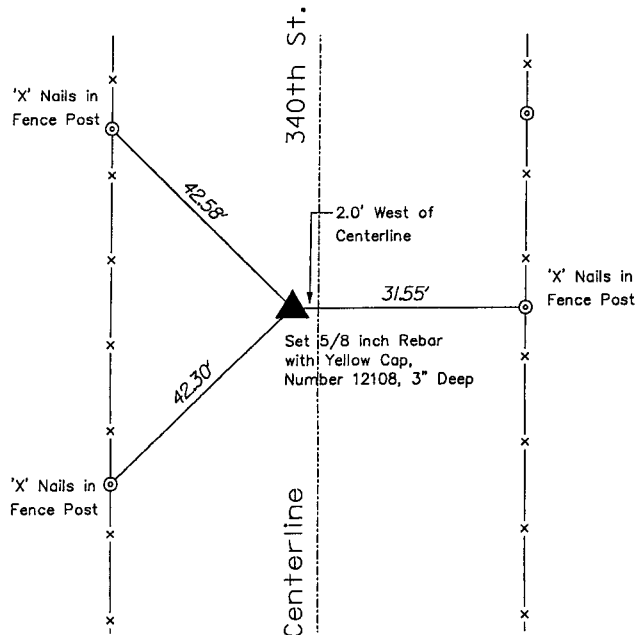
George A. Parris, PE/LS, JEO Consulting Group, Inc., 724 Simon Avenue, Carroll, Iowa 51401, 712-792-9711

**UNITED STATES PUBLIC LAND SURVEY
 CORNER CERTIFICATE**
 Land Survey Monument Situated in Section 36
 Township 84 North Range 38 West, of the 5th P.M.
CRAWFORD County, Iowa.

Monument Description and Remarks:

Set 5/8" x 24" rebar with yellow cap number 12108 3" deep, on line split between E1/4 and NE1/4. Rebar lies 2.0' West of centerline of gravel road (340th St.).

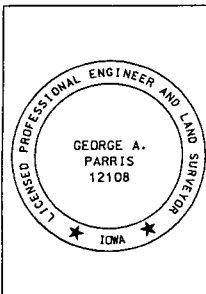
**PLAN - VIEW
 SE CORNER of the NE1/4 of the NE1/4
 SECTION 36 -T 84 N-R 38 W**



NO SCALE

All ties are "X" nails unless noted otherwise

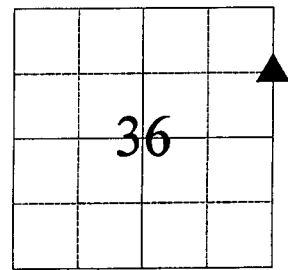
1227SU20



I hereby certify that this land surveying document was prepared and the related survey work was performed by me or under my direct personal supervision and that I am a duly Licensed Land Surveyor under the laws of the State of Iowa.

George A. Parris 1-7-04
 George A. Parris Date
 My license renewal date is December 31, 2004

Sheets covered by this seal:
 ALL



List Corner to be Indexed

Corner	Section	Twp	Range
SE-NE1/4-	36	84	38
NE1/4			

JEO
 Consulting Group, Inc.
 712/792-9711
 724 SIMON AVENUE
 CARROLL, IOWA 51401

CORPORATE OFFICE
 68943-8811
 P.O. BOX 587
 WAKARUSA, IA 50275

BRANCH OFFICES
 SIOUX CITY, IA 51350-3629
 LINCOLN, NE 68508-3246
 HASTINGS, NE 68901-8857
 NORFOLK, NE 68701-8416
 NEWARK CITY, NE 68571-0716
 NEW RICHMOND, WI 71528-0719
 http://www.jeo.com