

2004 JAN 20 PM 1:58

INST. NO. 2004-0154

DENISE MEEVES, RECORDER

Denise Meeves
FEB 11 2004

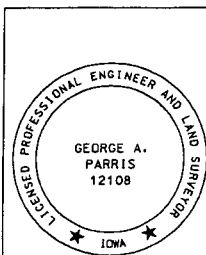
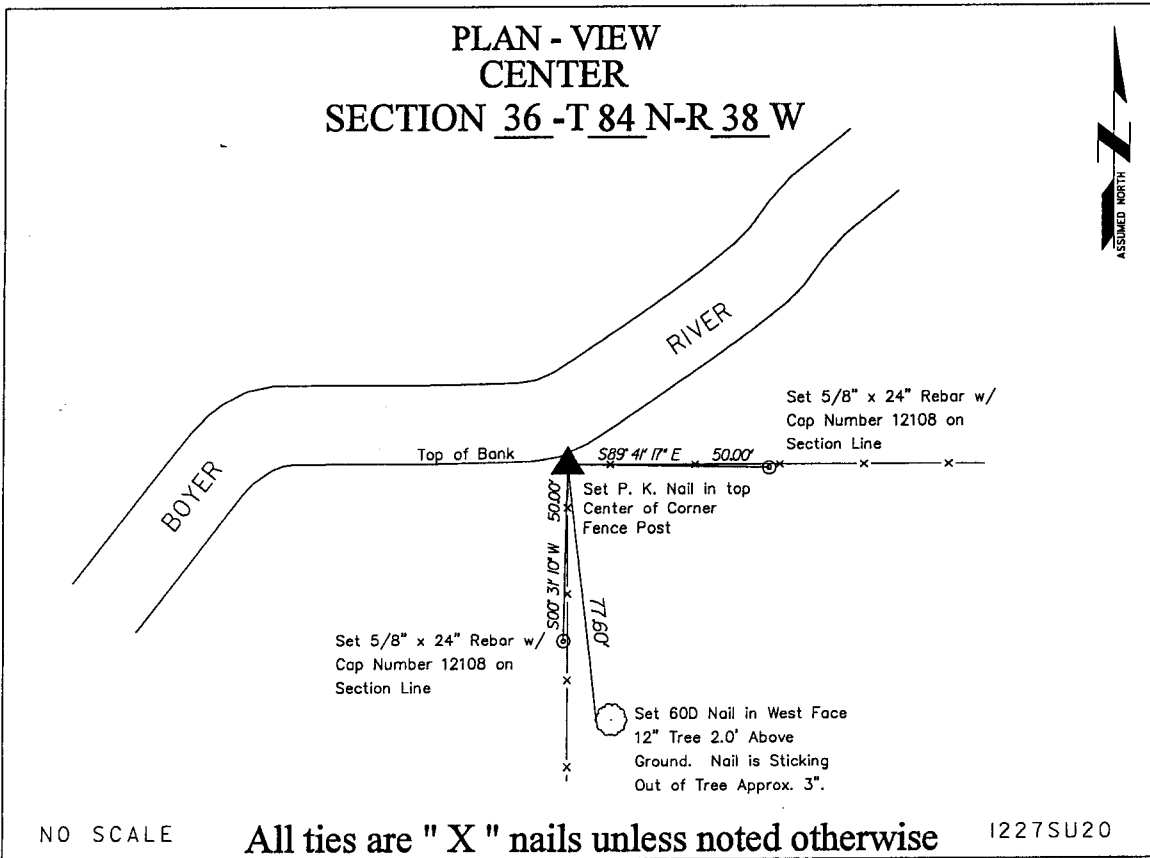
George A. Parris, PE/LS, JEO Consulting Group, Inc., 724 Simon Avenue, Carroll, Iowa 51401, 712-792-9711

UNITED STATES PUBLIC LAND SURVEY CORNER CERTIFICATE

Land Survey Monument Situated in Section 36
Township 84 North Range 38 West, of the 5th P.M.
CRAWFORD County, Iowa.

Monument Description and Remarks:

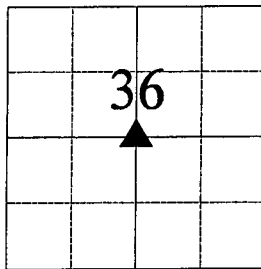
Searched for center of section monument and found nothing. Calculated center of section by intersecting quarter section lines. Found existing corner fence post (CFP) was within 2.0' +/- of this location. Used CFP as center of section. Set P. K. nail in top center of CFP. CFP is located on the Southeast top of bank of the Boyer River.



I hereby certify that this land surveying document was prepared and the related survey work was performed by me or under my direct personal supervision and that I am a duly licensed Land Surveyor under the laws of the State of Iowa.

George A. Parris 1-15-04 Date
George A. Parris
My license renewal date is December 31, 2004

Sheets covered by this seal:
ALL



List Corner to be Indexed

Corner	Section	Twp	Range
CENTER	36	84	38

JEO
Consulting
Group, Inc.

712/792-9711
724 SIMON AVENUE
CARROLL, IOWA
51401

CORPORATE OFFICE
48543-4881
P.O. BOX 287
SANGOL, NE
68028

BRANCH OFFICES
IOWA CITY, IA
31628-3628
LINCOLN, NE
48548-3040

HATHORN, NE
68342-4867

MORFOLI, NE
48321-9416

NEBRASKA CITY, NE
48262-8716

NEW RICHMOND, IA
71628-4219

http://www.jeo.com