

2004 JAN 20 PM 2:04
INST. NO. 2004 0159
DENISE HEEVER, RECORDER
Denise Heever
FEE \$ 11.00

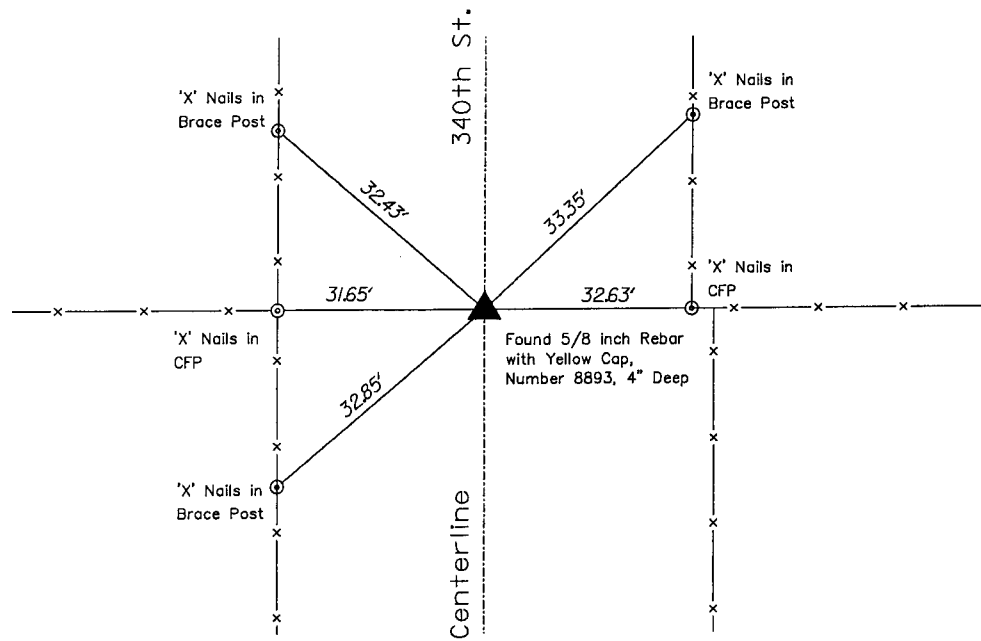
George A. Parris, PE/LS, JEO Consulting Group, Inc., 724 Simon Avenue, Carroll, Iowa 51401, 712-792-9711

UNITED STATES PUBLIC LAND SURVEY
CORNER CERTIFICATE
Land Survey Monument Situated in Section 36
Township 84 North Range 38 West, of the 5th P.M.
CRAWFORD County, Iowa.

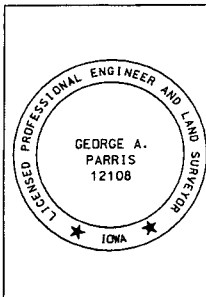
Monument Description and Remarks:

Found $\frac{5}{8}$ inch rebar with yellow cap, number 8893. Rebar located centerline of gravel road, 4 inches deep. Monument on line with East and West fence lines.

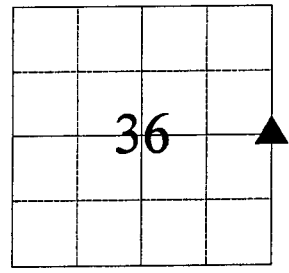
PLAN - VIEW
EAST QUARTER CORNER
SECTION 36 - T 84 N - R 38 W



NO SCALE All ties are " X " nails unless noted otherwise 1227SU20



I hereby certify that this land surveying document was prepared and the related survey work was performed by me or under my direct personal supervision and that I am a duly licensed Land Surveyor under the laws of the State of Iowa.
George A. Parris 1-7-04
George A. Parris Date
My license renewal date is December 31, 2004
Sheets covered by this seal:
ALL



List Corner to be Indexed
Corner E1/4 Section 36 Twp 84 Range 38

JEO
Consulting
Group, Inc.
712792-9711
724 SIMON AVENUE
CARROLL, IOWA
51401
CORPORATE OFFICE
40945-4881
P.O. BOX 307
WALCO, NE
68088
BRANCH OFFICES
OWASO, IA
31933-3603
LINCOLN, NE
40949-5090
HARTSEL, NE
40945-0507
NORFOLK, NE
40501-4119
NEBRASKA CITY, NE
40507-4706
NEW RICHMOND, IA
78268-4319
<http://www.jeo.com>