

2004 JAN 20 PM 2:02

LIST NO. 2004-0157

DENISE MEEVES, RECORDER

Denise Meeves

FEE \$ 11.00

George A. Parris, PE/LS, JEO Consulting Group, Inc., 724 Simon Avenue, Carroll, Iowa 51401, 712-792-9711

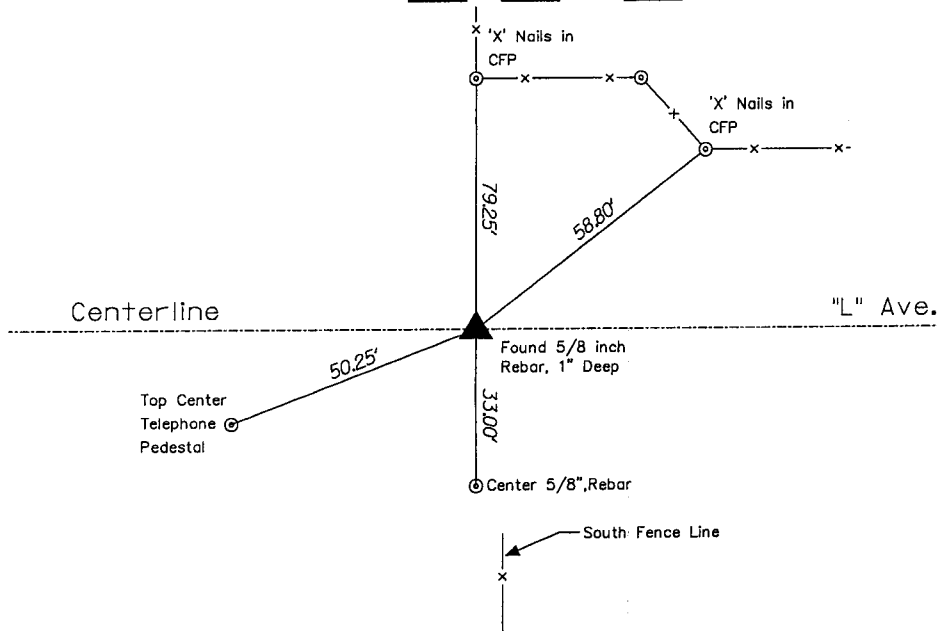
UNITED STATES PUBLIC LAND SURVEY CORNER CERTIFICATE

Land Survey Monument Situated in Section 36
Township 84 North Range 38 West, of the 5th P.M.
CRAWFORD County, Iowa.

Monument Description and Remarks:

Found 5/8 inch rebar. Rebar located on centerline of dirt road ("L" Ave.). Rebar is 1" deep. Monument is on line with the North fence and 2.0' +/- West of South fence line.

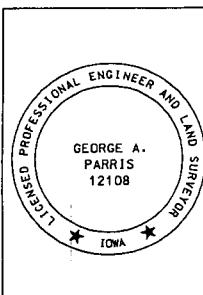
PLAN - VIEW NORTH QUARTER CORNER SECTION 36 - T 84 N - R 38 W



NO SCALE

All ties are "X" nails unless noted otherwise

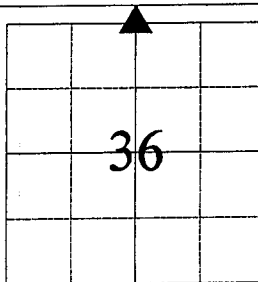
1227SU20



I hereby certify that this land surveying document was prepared and the related survey work was performed by me or under my direct personal supervision and that I am a duly licensed Land Surveyor under the laws of the State of Iowa.

George A. Parris 1-7-04
George A. Parris Date
My license renewal date is December 31, 2004

Sheets covered by this seal:
ALL



List Corner to be Indexed

Corner	Section	Twp	Range
N1/4	36	84	38

JEO
Consulting
Group, Inc.

712792-8711
724 SIMON AVENUE
CARROLL, IOWA
51401

CORPORATE OFFICE
40943-4881
P.O. BOX 207
HAWCO, NE
68328

BRANCH OFFICES
IOWA CITY, IA
31923-8800

LINCOLN, NE
68508-3040

HASTINGS, NE
68905-8827

HURON, NE
68331-9418

NEBRASKA CITY, NE
68102-8718

NEW HAMBURG, IA
51208-0218

http://www.jeo.com