

2004 JAN 20 PM 2:03

INST. NO. 2004-0158
DENISE MEEVES, RECORDER
Denise Meeves
FEE \$ 11.00

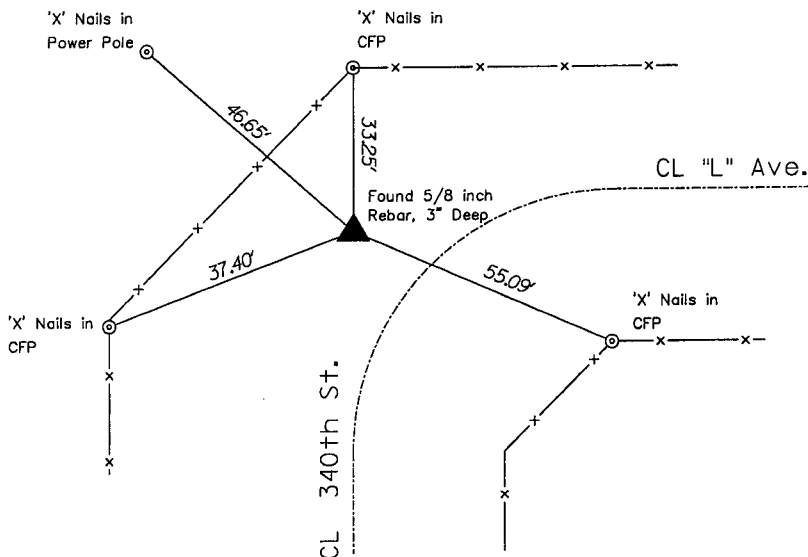
George A. Parris, PE/LS, JEO Consulting Group, Inc., 724 Simon Avenue, Carroll, Iowa 51401, 712-792-9711

UNITED STATES PUBLIC LAND SURVEY
CORNER CERTIFICATE
Land Survey Monument Situated in Section 36
Township 84 North Range 38 West, of the 5th P.M.
CRAWFORD County, Iowa.

Monument Description and Remarks:

Found $\frac{5}{8}$ inch rebar. Rebar located on line with North fence line and centerline of the South gravel road (340th St.), 9.0' +/- South of the Centerline of the East gravel road ("L" Ave.). Monument lies in the Northwest quadrant of the curve in front of a field entrance, 3 inches deep.

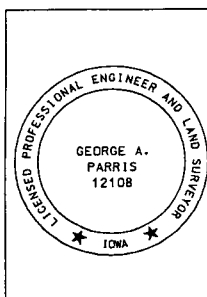
PLAN - VIEW
NORTHEAST CORNER
SECTION 36 - T 84 N - R 38 W



NO SCALE

All ties are "X" nails unless noted otherwise

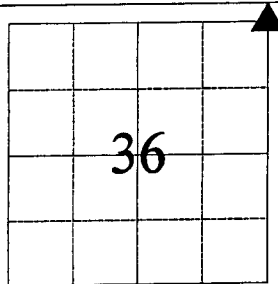
1227SU20



I hereby certify that this land surveying document was prepared and the related survey work was performed by me or under my direct personal supervision and that I am a duly licensed Land Surveyor under the laws of the State of Iowa.

George A. Parris 1-7-04
George A. Parris Date
My license renewal date is December 31, 2004

Sheets covered by this seal:
ALL



List Corner to be Indexed
Corner Section Twp Range
NE 36 84 38

JEO
Consulting
Group, Inc.

712/792-9711
724 SIMON AVENUE
CARROLL, IOWA
51401

CORPORATE OFFICE
40845-8811
P.O. BOX 207
MAYNARD, NE
68056

BRANCH OFFICES
SIBOLA CITY, IA
31803A-3628

LINCOLN, NE
40248-3940

HASTINGS, NE
40843-8827

HOMER, NE
40827-0416

NEWARK CITY, NE
40825-4208

NEW RICHTON, NE
712/648-4219

http://www.jeo.com