

INDEXED XX  
 FOLLOW UP \_\_\_\_\_  
 PROOFED \_\_\_\_\_  
 SCANNED \_\_\_\_\_

Instrument #: 2018-0413  
 02/23/2018 10:25:17 AM Total Pages: 1  
 PLC PLAT CORNER CER  
 Recording Fee: \$7.00 Transfer Tax: \$0  
 Denise Meeves, Recorder, Crawford County Iowa



PREPARED BY AND RETURN TO: ROBERT B. BILLS CENTRAL IOWA SURVEYING, LLC P.O. BOX 67 JEFFERSON, IOWA 50129  
**UNITED STATES PUBLIC LAND SURVEY CORNER CERTIFICATE OF**  
 Land Survey Monuments in Section 3, Township 84, Range  
38, of the Fifth Principal Meridian, CRAWFORD County, Iowa.  
 Previously recorded in \_\_\_\_\_ in County Recorder's Office.

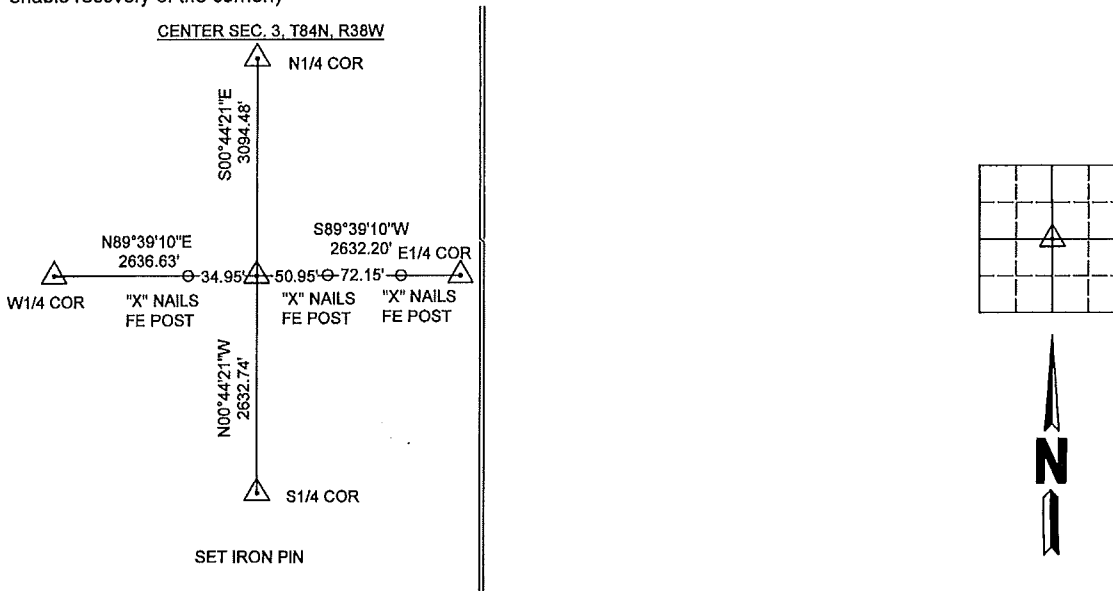
(book, page, document number, etc.)  
 (Show reason for preparing this certificate, the evidence and detailed procedures used in establishing the corner positions and monumentation found or placed.)

Monument Description and Remarks:

CENTER= SET 5/8"x24" REBAR WITH YELLOW CAP STAMPED R. BILLS #22850. SET AT A BEARING BEARING INTERSECTION BETWEEN THE N1/4 CORNER, S1/4 CORNER, E1/4 CORNER AND THE W1/4 CORNER. THIS FITS THE EAST LINE OF LOT 1 SE1/4 SW1/4 SURVEYED IN 2015 RECORDED IN BOOK 2015 PAGE 0099 WHICH USED A STRAIGHT LINE BETWEEN THE S1/4 CORNER AND THE N1/4.

**PLAN - VIEW**

(Show a minimum of three reference ties to durable physical objects, relevant monuments and physical conditions that will enable recovery of the corner.)



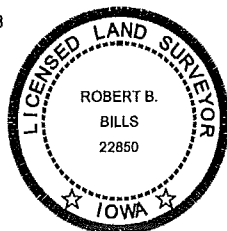
I hereby certify that this land surveying document and the related survey work was performed by me or under my direct personal supervision and that I am a duly licensed Land Surveyor under the laws of the State of Iowa.

Signature: Robert B. Bills  
 Robert B. Bills

Date: 02/21/2018 Lic. No. 22850

LICENSE RENEWAL DECEMBER 31ST 2018

Date Surveyed: 2/18



List Corners to be Indexed

Corners	Section	Twp	Range
CENTER	3	84	38

File No. 18B11

CENTRAL IOWA SURVEYING, LLC  
 P.O. BOX 67 JEFFERSON, IOWA 50129  
 PHONE (515) 370-2399 EMAIL rbills@centraliowasurveying.com