

INDEXED VM
 FOLLOW UP _____
 PROOFED _____
 SCANNED _____

Instrument #: 2018-0412
 02/23/2018 10:25:17 AM Total Pages: 1
 PLC PLAT CORNER CER
 Recording Fee: \$7.00 Transfer Tax: \$0
 Denise Meeves, Recorder, Crawford County Iowa



PREPARED BY AND RETURN TO: ROBERT B. BILLS CENTRAL IOWA SURVEYING, LLC P.O. BOX 67 JEFFERSON, IOWA 50129
UNITED STATES PUBLIC LAND SURVEY CORNER CERTIFICATE OF
 Land Survey Monuments in Section 3, Township 84, Range
38, of the Fifth Principal Meridian, CRAWFORD County, Iowa.
 Previously recorded in _____ in County Recorder's Office.

(book, page, document number, etc.)
 (Show reason for preparing this certificate, the evidence and detailed procedures used in establishing the corner positions and monumentation found or placed.)

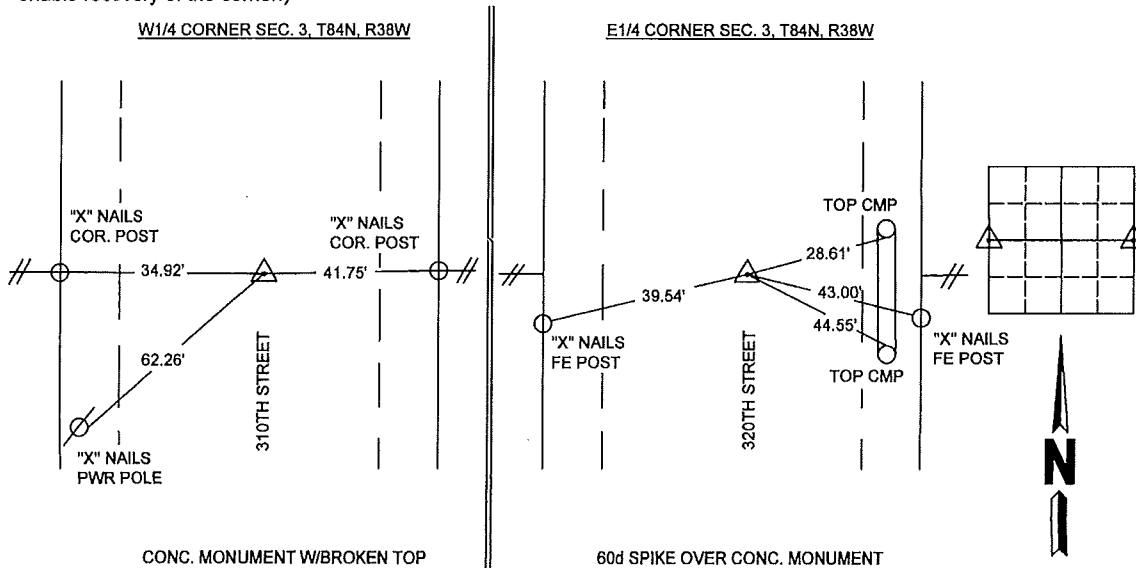
Monument Description and Remarks:

W1/4 CORNER= FOUND CONCRETE MONUMENT WITH BROKEN OFF TOP IN LINE WITH FENCE LINE EAST AND WEST AND IN CENTERLINE OF 310TH STREET.

E1/4 CORNER= FOUND 60d SPIKE OVER CONCRETE MONUMENT IN LINE WITH FENCE LINE EAST AND WEST AND IN CENTERLINE OF 320TH STREET.

PLAN - VIEW

(Show a minimum of three reference ties to durable physical objects, relevant monuments and physical conditions that will enable recovery of the corner.)



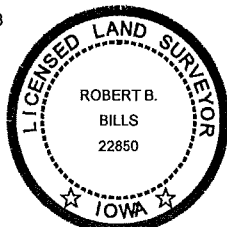
I hereby certify that this land surveying document and the related survey work was performed by me or under my direct personal supervision and that I am a duly licensed Land Surveyor under the laws of the State of Iowa.

Signature: Robert B. Bills
 Robert B. Bills

Date: 02/21/2018 Lic. No. 22850

LICENSE RENEWAL DECEMBER 31ST 2018

Date Surveyed: 2/18



List Corners to be Indexed

Corners	Section	Twp	Range
W1/4 CORNER	3	84	38
E1/4 CORNER	3	84	38

File No. 18B11

CENTRAL IOWA SURVEYING, LLC
 P.O. BOX 67 JEFFERSON, IOWA 50129
 PHONE (515) 370-2399 EMAIL rbills@centraliowasurveying.com