

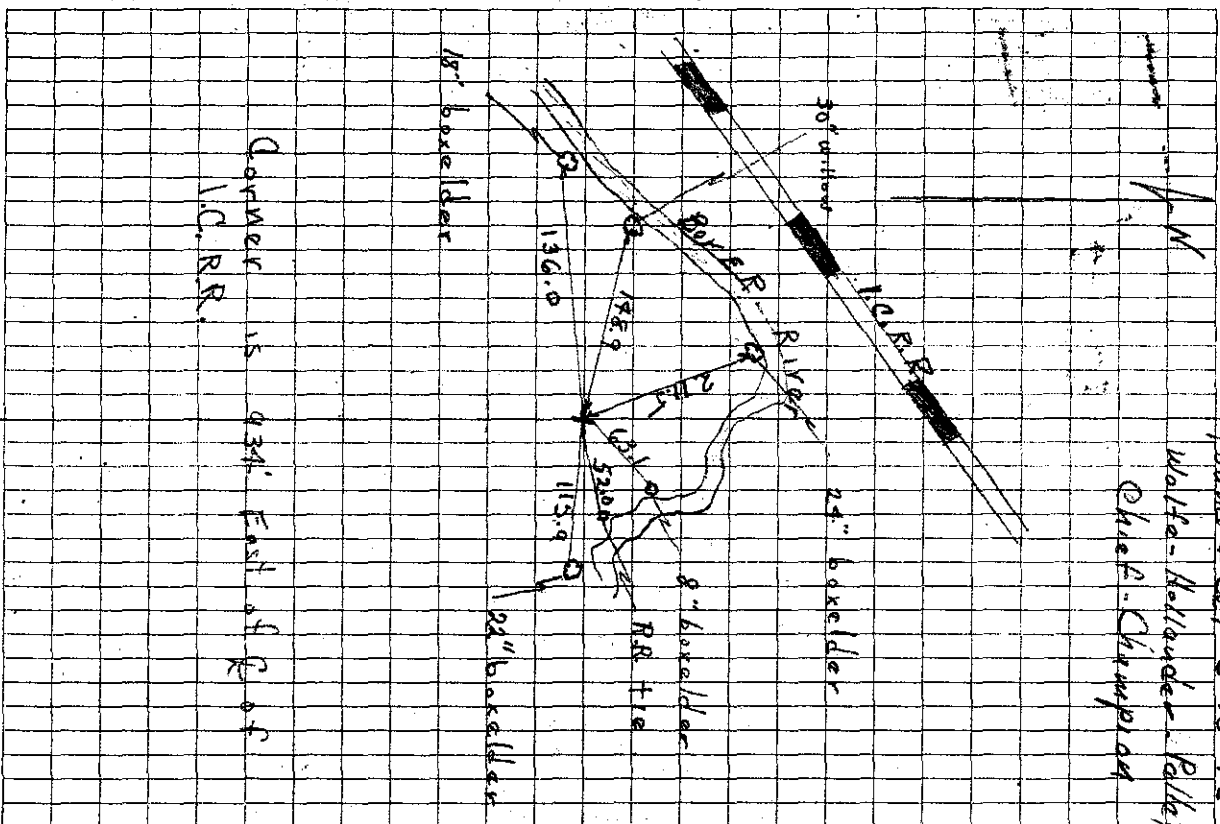
32/33
5/4

Missing ties obtained from Earl Rigoletman who had corner
Several years ago, and
checking with transit
random chaining and also
ties from L.C.R.R. Plat
found coverage in corner
was a flat file, red rock,
gray rock, piece of yellow
limestone, with fork handle
on top. Lowered old
evidence & set GM

ties from X-ss pks.

- 148.9 East of 30" willow
- 136.0 E NE of 18" boxelder
- 271.5 SSE of 29" boxelder
- 63.1 SSW of 8" boxelder
- 52.0 W of R.R. tie
- 115.9 WNW of 22" boxelder
- 934.0 E of 2 of L.C.R.R.

Found a Set 5-18-42
Walter Hollander Palley
Chief - Champaign



Corner is 934' East of 2 of L.C.R.R.

EN