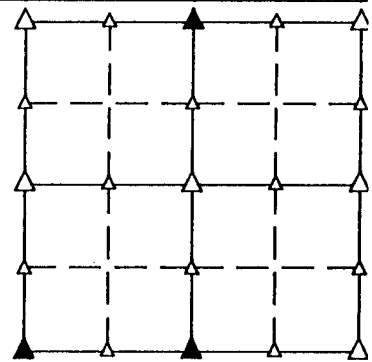


**UNITED STATES PUBLIC LAND SURVEY CORNER CERTIFICATE  
OF**

LAND SURVEY MONUMENT SITUATED IN SECTION 31, T 85 N, R 38 W OF  
THE 5TH P.M., CRAWFORD COUNTY, IOWA.  
PREVIOUSLY RECORDED IN BOOK \_\_\_\_\_, PAGE \_\_\_\_\_, OTHER \_\_\_\_\_

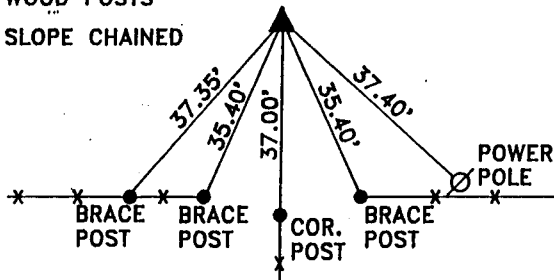
**MONUMENT DESCRIPTION AND REMARKS**

N1/4 CORNER - FOUND IRON PIN 1.5' DEEP, RAISED W/CAPPED PIN  
#8893 5" DEEP  
S1/4 CORNER - FOUND CONC. MONUMENT 3" DEEP  
SW CORNER - FOUND PK NAIL IN ASPHALT

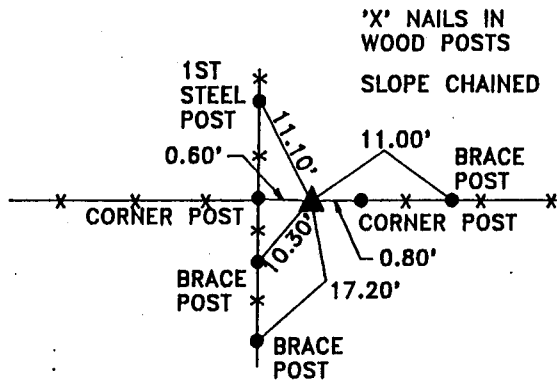


**PLAN VIEW SHOWING RELATIVE LOCATION OF MONUMENT AND REFERENCE POINTS.**

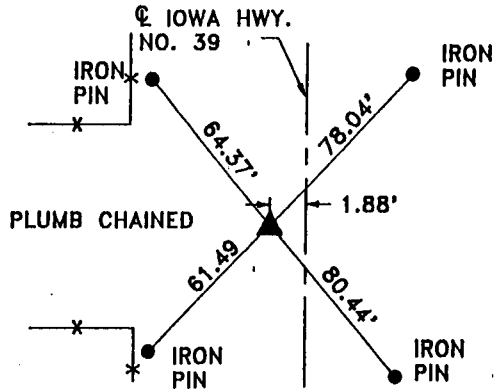
'X' NAILS IN  
WOOD POSTS  
SLOPE CHAINED



N1/4 CORNER SECTION 31-85-38



S1/4 CORNER SECTION 31-85-38

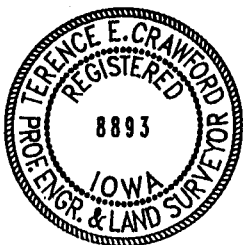


SW CORNER SECTION 31-85-38

I HEREBY CERTIFY THAT THE SURVEY WORK WAS COMPLETED AND THIS LAND SURVEYING DOCUMENT WAS PREPARED BY ME OR UNDER MY DIRECT PERSONAL SUPERVISION AND THAT I AM A DULY REGISTERED LAND SURVEYOR UNDER THE LAWS OF THE STATE OF IOWA.

*Terence E. Crawford*  
TERENCE E. CRAWFORD

RECORDING OFFICER



DATE 12-6-95  
IA REG. NO. 8893  
EXP. DATE DECEMBER 31, 1995