

INDEXED                       
 FOLLOW UP                       
 PROOFED                       
 SCANNED                     

REC011672



Crawford County Recorder Denise Meeves  
 FEE BOOK 2006-2440 8/18/2006 @ 11:18AM  
 PLC PLAT CORNER CERBook: Page: #: 1  
 Total Fees: \$7.00

RETURN TO SNYDER & ASSOCIATES, INC. 2727 SW SNYDER ROAD, ANKENY, IOWA 50023 (888) 964-2020

## UNITED STATES PUBLIC LAND SURVEY CORNER CERTIFICATE OF

Land Survey Monuments situated in Section 36, Township 85, Range 38, of the Fifth Principal Meridian, CRAWFORD County, Iowa.  
 Previously recorded in N/A in County Recorder's Office.  
 (book, page, document number, ect.)

(Show reason for preparing this certificate, the evidence and detailed procedures used in establishing the corner positions and monumentation found or placed.)

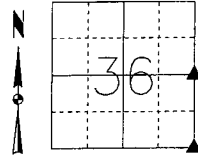
**Monument Description and Remarks:**

EAST 1/4 CORNER - FOUND CONCRETE MONUMENT IN CENTERLINE 340th STREET USING COUNTY ENGINEER SECTION CORNER TIES AND RETIED SECTION CORNER.

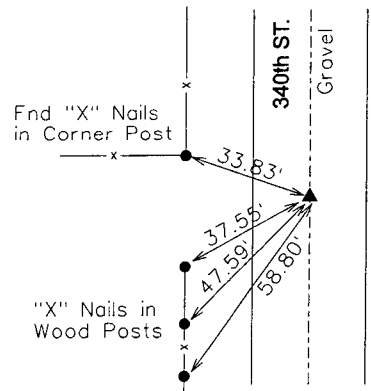
SOUTHEAST CORNER - FOUND 1/2" BOLT IN CENTERLINE 340th STREET AND "G" AVENUE USING COUNTY ENGINEER SECTION CORNER TIES AND RETIED SECTION CORNER.

**Plan-View**

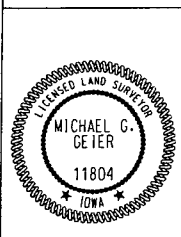
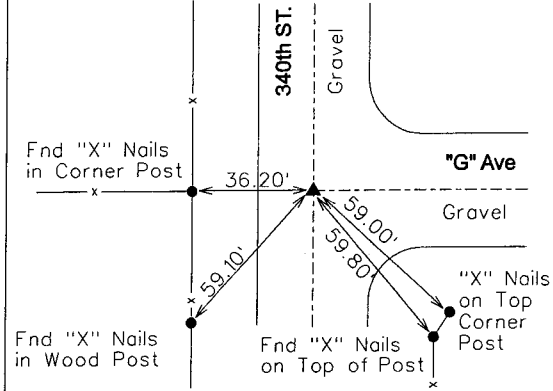
(Show a minimum of three reference ties to durable physical objects, relevant monuments and physical conditions that will enable recovery of the corner.)



**E 1/4 CORNER  
FOUND CONCRETE MONUMENT**



**SOUTHEAST CORNER  
FOUND 1/2" BOLT**



I hereby certify that this land surveying document was prepared and the related surveying work was performed by me or under my direct supervision and that I am a duly licensed Land Surveyor under the laws of the State of Iowa.  
*Michael G. Geier 8-10-06*  
 Michael G. Geier, PLS Date  
 License Number 11804  
 My License Renewal Date is December 31, 2007  
 Pages or sheets covered by this seal:  
 SHEET 1 OF 1

List Corners to be Indexed

Corners	Section	Twp	Range
E 1/4 COR	36	85	38
W 1/4 COR	31	85	37
SE COR	36	85	38
NE COR	1	84	38
NW COR	6	84	37
SW COR	31	85	37