



PREPARED BY - TERENCE E. CRAWFORD - SUNDQUIST ENGINEERING - 120 S. MAIN, DENISON, IOWA 51442 - PHONE (712) 263-8118

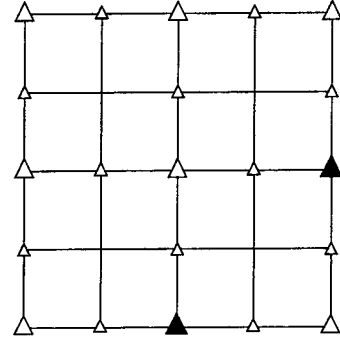
UNITED STATES PUBLIC LAND SURVEY CORNER CERTIFICATE OF

LAND SURVEY MONUMENT SITUATED IN SECTION 6, T 84 N, R 38 W OF
THE 5TH P.M., CRAWFORD COUNTY, IOWA. ✓
PREVIOUSLY RECORDED IN BOOK _____, PAGE _____, OTHER _____

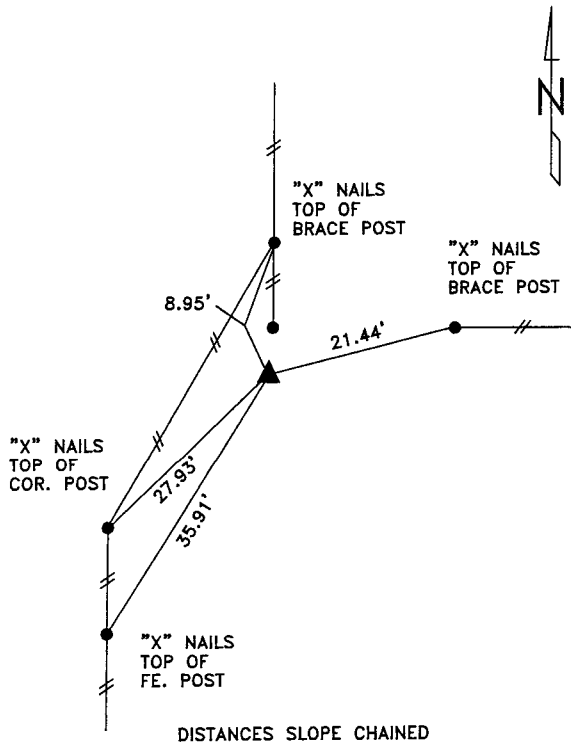
MONUMENT DESCRIPTION AND REMARKS

S1/4 CORNER - SET 5/8" DIA. X 18" IRON PIN W/YELLOW CAP #8893, SET AT CORNER POST.

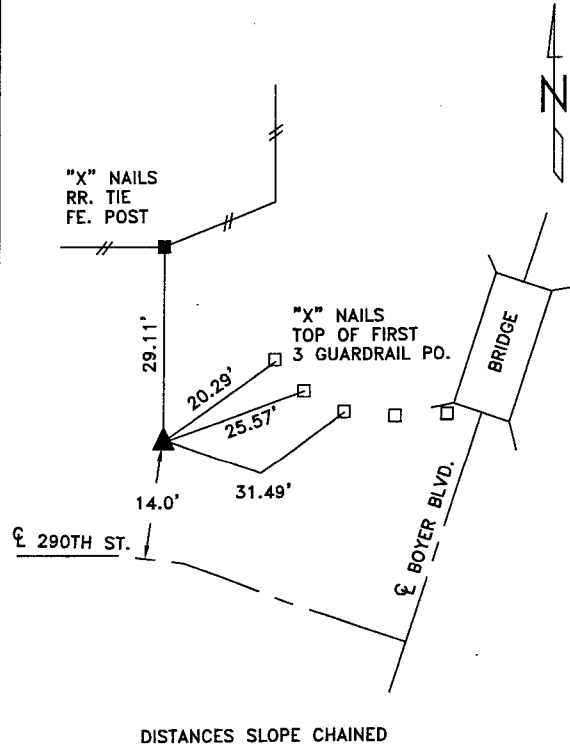
E1/4 CORNER - FOUND CM 3.0' DEEP, RAISED W/5/8" DIA. X 18" IRON PIN W/ YELLOW CAP #8893, 0.7' DEEP.



PLAN VIEW SHOWING RELATIVE LOCATION OF MONUMENT AND REFERENCE POINTS.



S1/4 CORNER SECTION 6-84-38



E1/4 CORNER SECTION 6-84-38

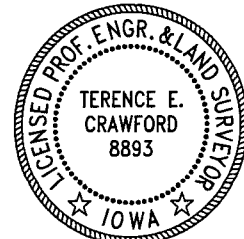
I HEREBY CERTIFY THAT THIS LAND SURVEYING DOCUMENT WAS PREPARED AND THE RELATED SURVEY WORK WAS PERFORMED BY ME OR UNDER MY DIRECT SUPERVISION AND THAT I AM A DULY LICENSED LAND SURVEYOR UNDER THE LAWS OF THE STATE OF IOWA.

Terence E. Crawford

FEB 07 2005

TERENCE E. CRAWFORD
IA LICENSE NO. 8893

DATE
EXP. DATE DECEMBER 31, 2005



SE PROJECT NO. 20205
DRAWN BY: LLL