

INDEXED
FILED
CRAWFORD COUNTY
IOWA

This document prepared by: Semke & Associates - 712-792-2276
Michael G. Semke, L.S.#10318 - 608 N. Court St., Carroll, Iowa

UNITED STATES PUBLIC LAND SURVEY CORNER CERTIFICATE
OF

Land Survey Monuments situated in Section 8, Township 84, Range 38, of the Fifth Principal Meridian, Crawford County, Iowa. Previously recorded in _____ in County Recorder's Office.

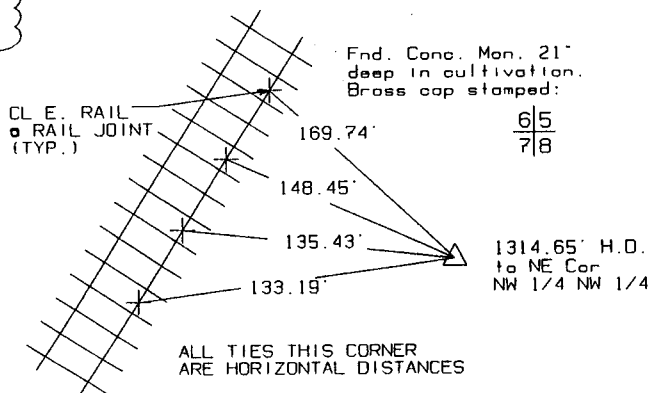
(book, page, document number, etc.)

(Show reason for preparing this certificate, the evidence and detailed procedures used in establishing the corner positions and monumentation found or placed.)

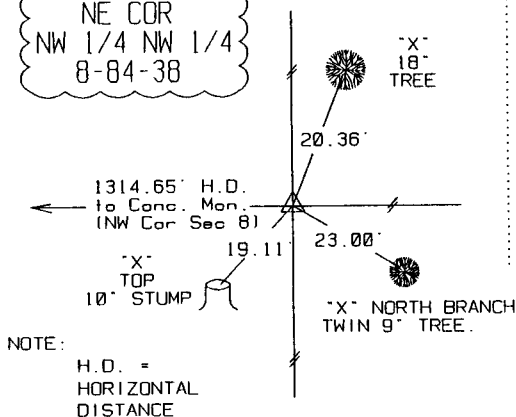
PLAN - VIEW

(Show a minimum of three reference ties to durable physical objects, relevant monuments and physical conditions that will enable recovery of the corner.)

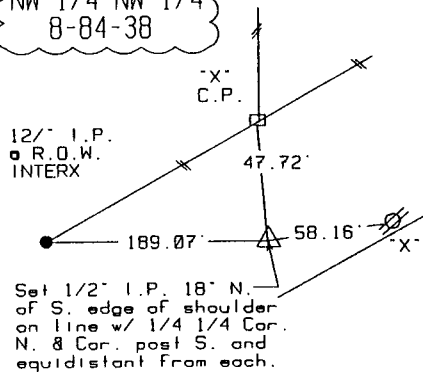
NW COR
8-84-38



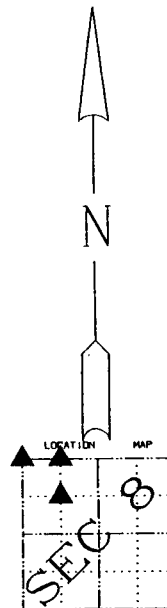
NE COR
NW 1/4 NW 1/4
8-84-38



SE COR
NW 1/4 NW 1/4
8-84-38



ALL TIES THIS CORNER ARE HORIZONTAL DISTANCES



Note: All ties slope chained unless noted.



I HEREBY CERTIFY THAT THIS CORNER CERTIFICATE WAS PREPARED BY ME OR UNDER MY DIRECT PERSONAL SUPERVISION AND THAT I AM A PROFESSIONAL LAND SURVEYOR UNDER THE LAWS OF THE STATE OF IOWA.

MY REGISTRATION IS SUBJECT TO RENEWAL, 12-31-01.

2/7/00
DATE

Michael G. Semke
MICHAEL G. SEMKE, RLS NO 10318

List Corners to be Indexed			
Corners	Section	Twp	Range
NW COR	8	84	38
NE COR	7	84	38
SE COR	6	84	38
SW COR	5	84	38
NE COR NW 1/4 NW 1/4	8	84	38
SE COR NW 1/4 NW 1/4	8	84	38