

RECORDED IN IOWA  
 CRAWFORD COUNTY  
 2001 DE 20 AM 10:32  
 INST. NO. 2001-3671  
 DENISE MEEVES, RECORDER  
 DENISE MEEVES  
 FEE \$ 6.00

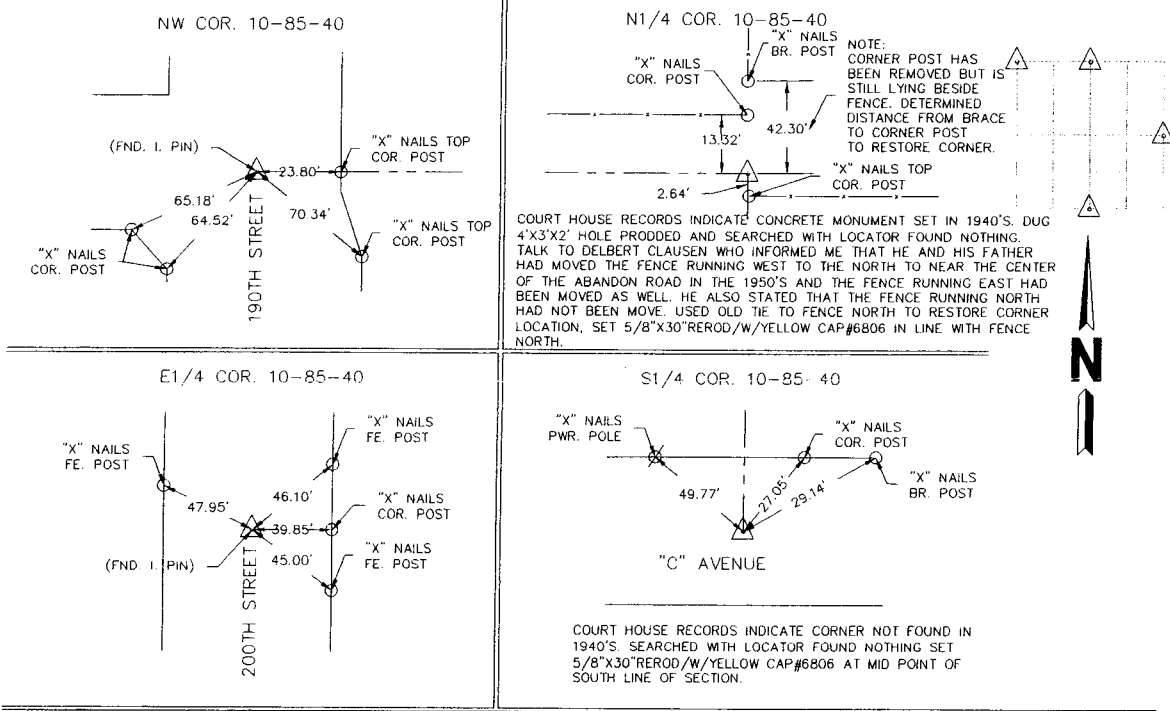
INDEXED  
 FILED  
 RECORDED

WARDER C. HILLHOUSE, JR. MHF ENGINEERING P.C. 300 W. MCKINLEY JEFFERSON, IA. (515)386-4101  
**UNITED STATES PUBLIC LAND SURVEY CORNER CERTIFICATE OF**  
 Land Survey Monuments in Section 10, Township 85, Range 40,  
 of the Fifth Principal Meridian, CRAWFORD County, Iowa.  
 Previously recorded in \_\_\_\_\_ in County Recorder's Office.  
 (book, page, document number, etc.)

(Show reason for preparing this certificate, the evidence and detailed procedures used in establishing the corner positions and monumentation found or placed.)  
 Monument Description and Remarks: \_\_\_\_\_  
 \_\_\_\_\_  
 \_\_\_\_\_

**PLAN - VIEW**

(Show a minimum of three reference ties to durable physical objects, relevant monuments and physical conditions that will enable recovery of the corner.)

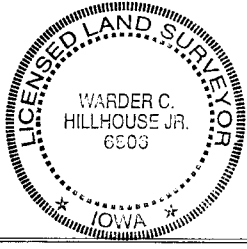


I hereby certify that land surveying document and the related survey work was performed by me or under my direct personal supervision and that I am a duly licensed land surveyor under the laws of the state of Iowa.

Signature: Warder C. Hillhouse, Jr.  
 Name typed or printed: Warder C. Hillhouse, Jr.  
 Date: 12/18/01 Lic. No. 6806

License Renewal Dec. 31, 2001  
 Date Surveyed: 12/01

Seal



List Corners to be Indexed

Corners	Section	Twp	Range
NW COR.	10	85	40
N1/4 COR.	10	85	40
E1/4 COR.	10	85	40
S1/4 COR.	10	85	40

File No. 01233-1

**M.H.F. ENGINEERING, P.C.**  
 ENGINEERS - LAND SURVEYORS  
 Jefferson, Iowa 50129 Ph. (515)386-4101