

Crawford County Recorder
 Denise Meeves
Fee Book 2012-0090
 01/12/2012 @11:17AM
 PLAT CORNER CER
 Book: Page: \$7.00 # Pages: 1
 Total Fees:

AP 20

Prepared by: Nathan H. Carlson Address: 3701 12th Street N, Suite 206, Phone: 320-253-9495
St. Cloud, MN 56303

UNITED STATES PUBLIC LAND SURVEY CORNER CERTIFICATE FOR

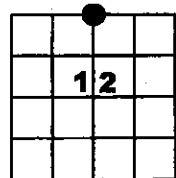
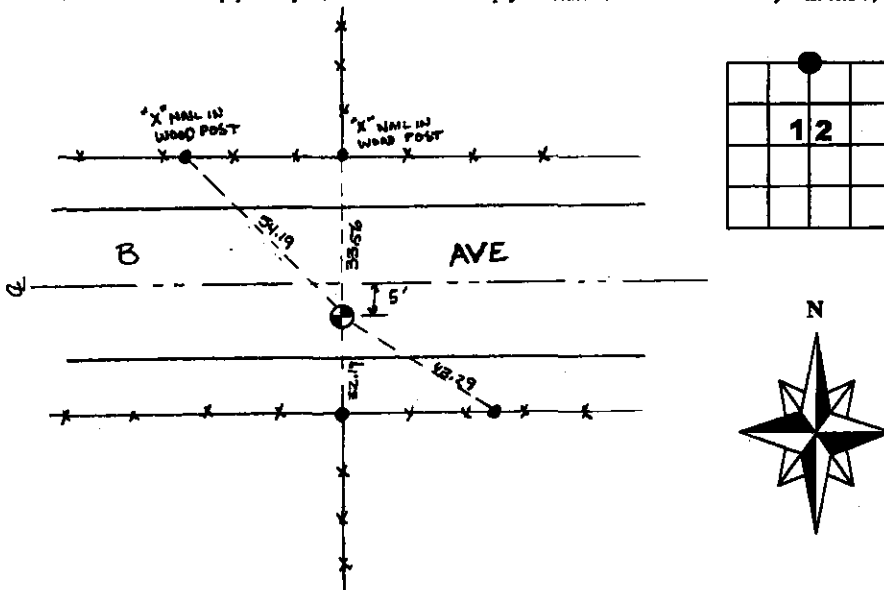
Land survey monuments situated in Section 12, Township 85N
 Range 40W, of the Fifth Principal Meridian, Crawford County, Iowa.
 Previously recorded in N/A in County Recorder's Office.

(Show reason for preparing this certificate, the evidence and detailed procedures used in establishing the corner positions & monumentation found or placed.)

MONUMENT DESCRIPTION AND REMARKS: Excavated a hole 5' x 5' by 1.5' down and found a monument in concrete. Monument position falls on fence lines north/south and lies 5 feet south of traveled centerline. Set a 1/2" rebar with LS cap 19314 above the found monument and established reference ties as noted.

PLAN - VIEW

(Show a minimum of three reference ties to durable physical objects, relevant monuments and physical conditions that will enable recovery of the corner.)



SEAL



SLST-3/98

I hereby certify that this land surveying document was prepared and the related survey work was performed by me or under my direct personal supervision and that I am a duly licensed Land Surveyor under the laws of the State of Iowa.

Nathan H. Carlson 1/12/2012
 Signature Date

Typed/Printed Name: Nathan H. Carlson

License Number: 19314

My license renewal date is December 31, 2012

Pages or sheets covered by this seal: This sheet

Corners to be Indexed

Corners	Section	Twp.	Range
N1/4	12	85N	40W