

INDEXED _____
 FOLLOW UP _____
 PROOFED _____
 SCANNED _____

Instrument #: 2018-1471
 07/26/2018 10:03:09 AM Total Pages: 1
 PLC PLAT CORNER CER
 Recording Fee: \$7.00 Transfer Tax: \$0
 Denise Meeves, Recorder, Crawford County Iowa



PREPARED BY - JOSEPH P. RUESCHENBERG - SUNDQUIST ENGINEERING - 120 S. MAIN, DENISON, IOWA 51442 - PHONE (712) 263-8118

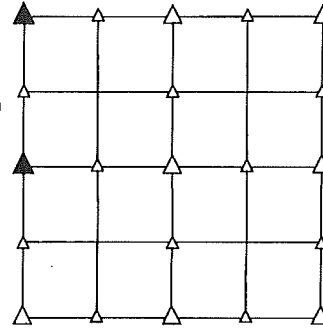
UNITED STATES PUBLIC LAND SURVEY CORNER CERTIFICATE
 OF

LAND SURVEY MONUMENT SITUATED IN SECTION 13, T. 85 N, R. 40 W OF
 THE 5TH P.M., CRAWFORD COUNTY, IOWA.
 PREVIOUSLY RECORDED IN BOOK _____, PAGE _____, OTHER _____

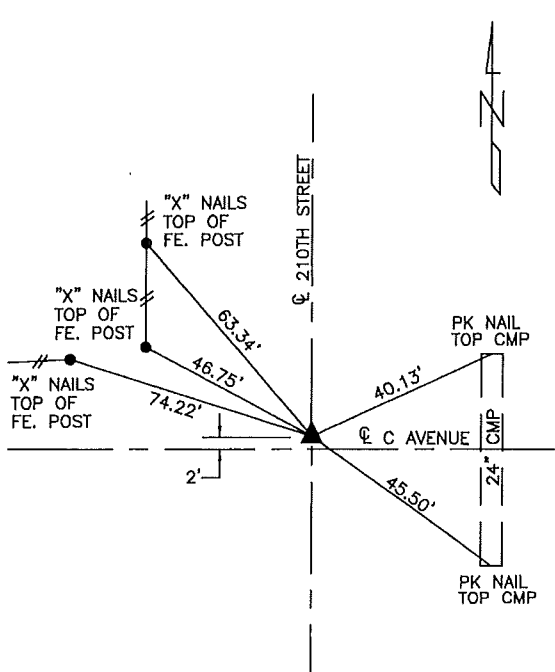
MONUMENT DESCRIPTION AND REMARKS

NW CORNER - FOUND IRON PIN W/ORANGE CAP #13721 20" DEEP.
 SET 5/8" DIA. X 18" IRON PIN W/ORANGE CAP #14709
 4" DEEP DIRECTLY OVER FOUND PIN.

W1/4 CORNER - FOUND 1/2" DIA. IRON PIN 12" DEEP.

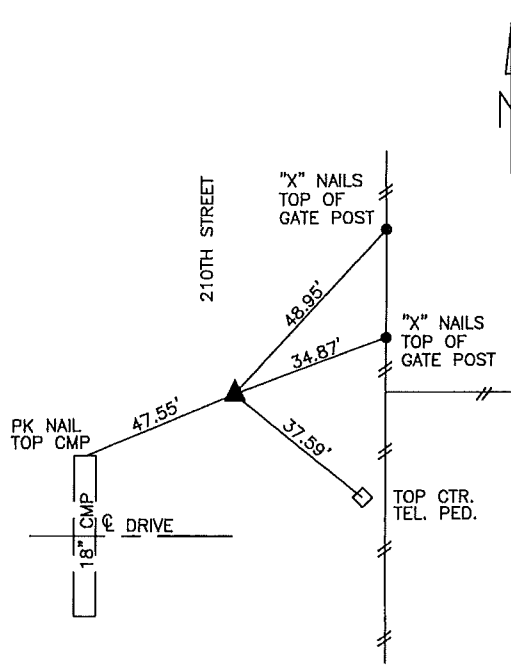


PLAN VIEW SHOWING RELATIVE LOCATION OF MONUMENT AND REFERENCE POINTS.



DISTANCES PLUMB CHAINED

NW CORNER SECTION 13-85-40



DISTANCES PLUMB CHAINED

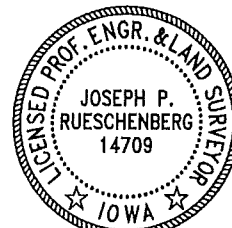
W1/4 CORNER SECTION 13-85-40

I HEREBY CERTIFY THAT THIS LAND SURVEYING DOCUMENT WAS PREPARED AND THE RELATED SURVEY WORK WAS PERFORMED BY ME OR UNDER MY DIRECT PERSONAL SUPERVISION AND THAT I AM A DULY LICENSED LAND SURVEYOR UNDER THE LAWS OF THE STATE OF IOWA.

Joseph P. Rueschenberg 7-24-2018
 JOSEPH P. RUESCHENBERG DATE

IA LICENSE NO. 14709

EXP. DATE DECEMBER 31, 2018



SE PROJECT NO. 22718
 DRAWN BY: LLL