

INDEXED ✓ / /
FOLLOW UP _____
PROOFED _____
SCANNED _____

Instrument #: 2014-1521
07/31/2014 10:31:29 AM Total Pages: 1
PLC PLAT CORNER CER
Recording Fee: \$7.00 Transfer Tax: \$0
Genise Reeves, Recorder, Crawford County Iowa

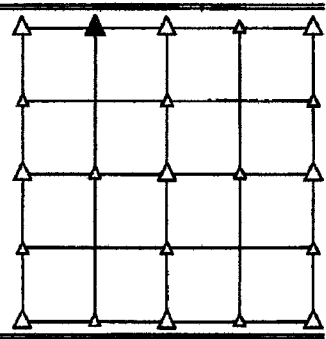
PREPARED BY - JOSEPH P. RUESCHENBERG - SUNDQUIST ENGINEERING - 120 S. MAIN, DENISON, IOWA 51442 - PHONE (712) 263-8118

UNITED STATES PUBLIC LAND SURVEY CORNER CERTIFICATE OF

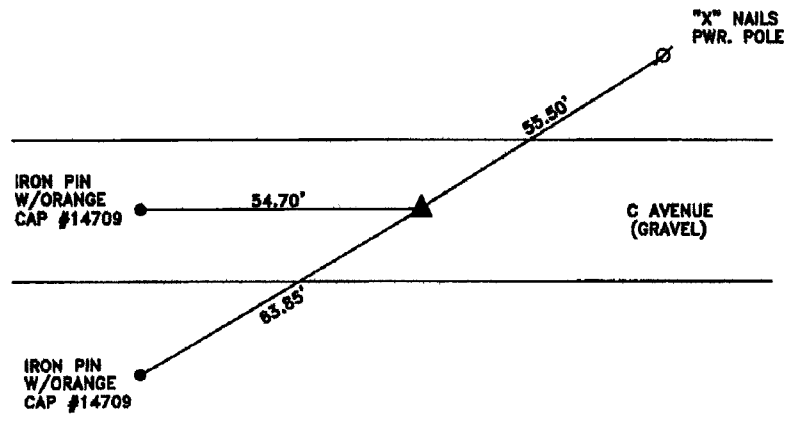
LAND SURVEY MONUMENT SITUATED IN SECTION 15, T 85 N, R 40 W OF
THE 5TH P.M., CRAWFORD COUNTY, IOWA.
PREVIOUSLY RECORDED IN BOOK _____, PAGE _____, OTHER _____

MONUMENT DESCRIPTION AND REMARKS

NE CORNER
NW1/4 NW1/4 - SET 5/8" DIA. X 18" IRON PIN W/ORANGE CAP
#14709 0.4' DEEP. SET ON LINE AND AT SPLIT
BETWEEN N1/4 COR. AND NW COR. OF SEC. 15.



PLAN VIEW SHOWING RELATIVE LOCATION OF MONUMENT AND REFERENCE POINTS.



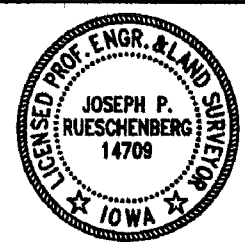
DISTANCES PLUMB CHAINED
NE CORNER NW1/4 NW1/4
SECTION 15-85-40

I HEREBY CERTIFY THAT THIS LAND SURVEYING DOCUMENT WAS PREPARED
AND THE RELATED SURVEY WORK WAS PERFORMED BY ME OR UNDER MY
DIRECT PERSONAL SUPERVISION AND THAT I AM A DULY LICENSED LAND
SURVEYOR UNDER THE LAWS OF THE STATE OF IOWA.

Joseph P. Rueschenberg 7-30-2014
JOSEPH P. RUESCHENBERG DATE

IA LICENSE NO. 14709

EXP. DATE DECEMBER 31, 2014



SE PROJECT NO. 21614
DRAWN BY: LLL