

Crawford County Recorder
 Denise Meeves
Fee Book 2012-0086
 01/12/2012 011:14AM
 PLC PLAT CORNER CER
 Book: Page: # Pages: 1
 Total Fees: \$7.00

DD

Prepared by: Nathan H. Carlson Address: 3701 12th Street N, Suite 206, Phone: 320-253-9495
St. Cloud, MN 56303

UNITED STATES PUBLIC LAND SURVEY CORNER CERTIFICATE FOR

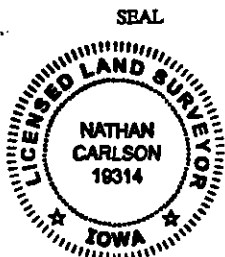
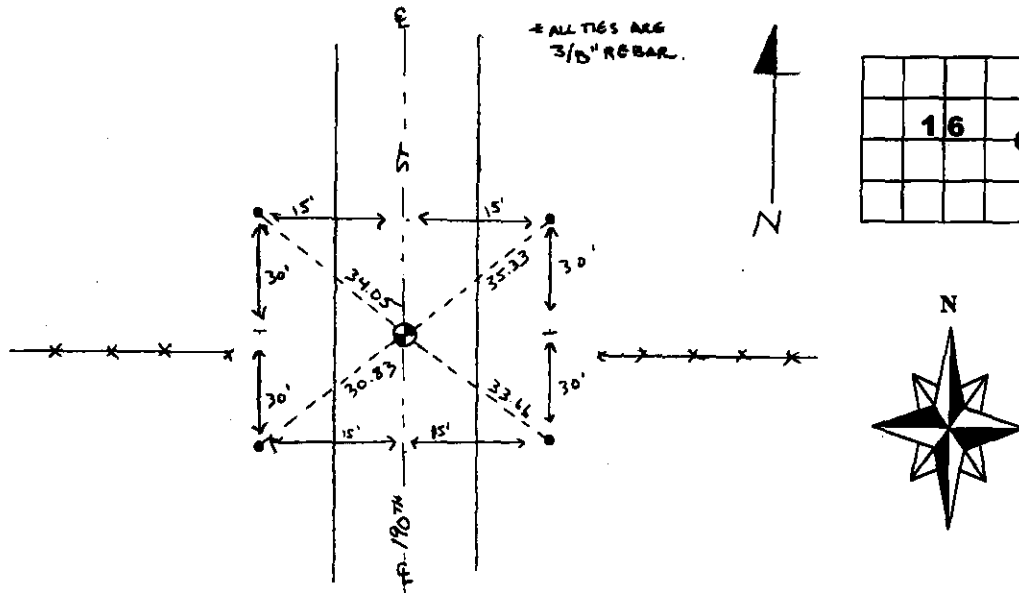
Land survey monuments situated in Section 16, Township 85N
Range 40W of the Fifth Principal Meridian, Crawford County, Iowa.
 Previously recorded in N/A in County Recorder's Office.

(Show reason for preparing this certificate, the evidence and detailed procedures used in establishing the corner positions & monumentation found or placed.)

MONUMENT DESCRIPTION AND REMARKS: Searched with a metal locator and found
a capped rebar LS 13721 in the north/south centerline and 3 feet south of the east/west fence
line. Measured a distance of 2644.22 feet to both the northeast and southeast section corners.
Established reference ties as noted below.

PLAN - VIEW

(Show a minimum of three reference ties to durable physical objects, relevant monuments and physical conditions that will enable recovery of the corner.)



SLSI-3/98

I hereby certify that this land surveying document was prepared and the related survey work was performed by me or under my direct personal supervision and that I am a duly licensed Land Surveyor under the laws of the State of Iowa.

Nathan H. Carlson 1/14/2012
 Signature Date

Typed/Printed Name: Nathan H. Carlson

License Number: 19314

My license renewal date is December 31, 2012

Pages or sheets covered by this seal: This sheet

Corners to be Indexed

Corners	Section	Twp.	Range
E1/4	16	85N	40W