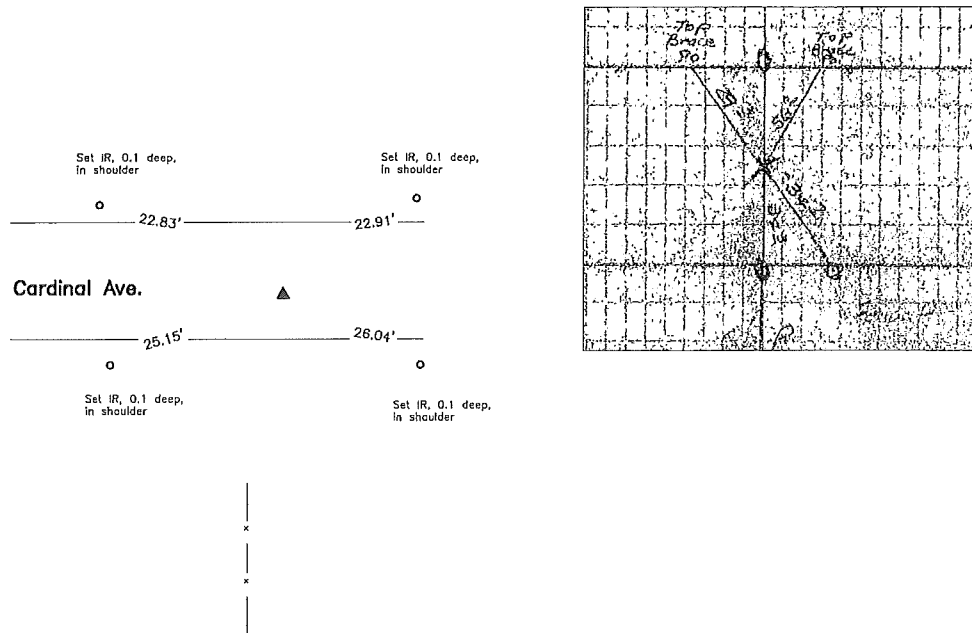


3/4 Cor.

County Engineer's Record Ties



History of Corner =

- 1882, May 31 - "Set Stone 16x12x5" per County Engineer's McHenry Field Bok 14 Page 114.
- 1883, Apr. 27 - County Engineer's Surveyor's Record Book Page 117 and County Engineer's McHenry Field Book 34 Page 6 indicate usage but not type of monumentation at corner.
- 1939, Aug. 19 - 'Found rotted remains of lath 6" long - 2 1/2' deep, 1 rook 7"x10"14" - 3' deep, rotted remains of oak stake at side of lath. Lowered and set C.M.' per County Engineer's WPA Field Book Morgan Twp Page 48.
- 1951, Nov. 1 - "ok cor is 1.5 East of 1/4 Sec Line from South" per County Engineer's WPA Field Book Morgan Twp Page 48.
- 1976, Sep. 23 - "Found C.M." per County Engineer's WPA Field Book Morgan Twp Page 48.
- 2010, Nov. 5 - 'FOUND CM, SET 5/8" DIA. X 18" IRON PIN W/YELLOW CAP #8893 OVER CM' per County Recorder's Fee Book 2010-2533.
- 2010, Nov. 11 - 'FOUND 2 PIECES OF BRICK AND A 4"x4" ROCK OVER CM, CM IS 1.6' DEEP, SET 5/8" DIA. X 18" IRON PIN ON SO. SIDE OF CM FOR LOCATING, SET 5/8" DIA. X 9" IRON PIN W/YELLOW CAP #8893 0.4' DEEP.' per County Recorder's Fee Book 2010-2829.

For previous and current County Engineer's ties, see County Engineer's WPA Field Book Morgan Twp Page 48 with ties as shown.

Corner Recovery =

Searched area with metal detector, but found nothing. Excavated 4.0'± (East-West) x 2.5'± (North-South) x 4.3'± deep hole at centerline of gravel road (East-West) and 1.5'± East of fenceline remnants South and found a 3/8"ø x 1.0' yellow capped iron rered (#8893), 3.1' deep, on 4" x 4" brass capped concrete monument, 4.1' deep, with brick pieces around concrete monument. Monuments found are in apparent centerline of traveled surface of road and 1.5'± East of fencelines remnants South. Location of monuments found match that of record and monuments found match that of record. Therefore, removed 3/8"ø rered, set a 3/4"ø x 3.6' aluminum capped iron rered (#23133) on concrete monumented 0.5' deep to raise up monumentation, and used 3/4"ø rered as the correct corner. All ties are plumb distance unless indicated otherwise.

This certificate is being prepared because there are no longer three valid ties of record and there is a change to monumentation of record.

